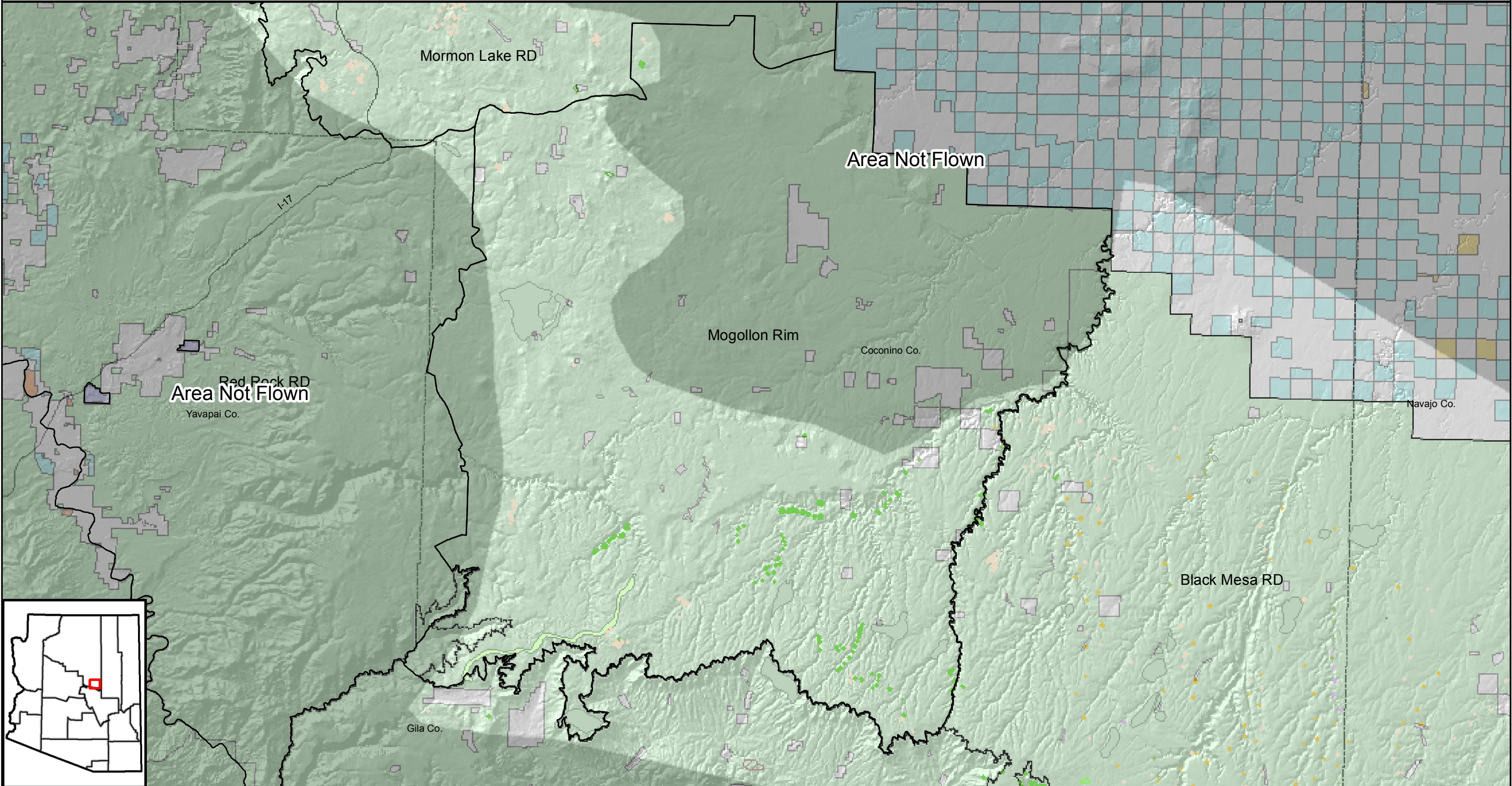




2009 Region 3 Forest Health Protection Insect and Disease Aerial Detection Survey

Coconino National Forest - Mogollon Ranger District



Ownership	
Bureau of Land Management	Other
Bureau of Reclamation	Private
County	US Forest Service
Tribal Land	US Fish and Wildlife Service
State	
Military	
National Park Service	

Mortality	
Doug-fir Beetle	
Spruce Beetle	
Western Balsam Bark Beetle	
Pinyon Ips	
Ips Engraver	
Fir Engraver	
Aspen Mortality	
Roundheaded Pine Beetle	
Western Pine Beetle	

Defoliation	
Unknown Defoliator (Heavy)	
Unknown Defoliator (Light)	
Western Spruce Budworm (Light)	
Western Spruce Budworm (Heavy)	
Pine Sawfly (Heavy)	
Pine Sawfly (Light)	
Nepytia janetae (Light)	

Defoliation	
Nepytia janetae (Heavy)	
Aspen Defoliation (Heavy)	
Aspen Defoliation (Light)	

Other	
Chemical Damage (Light)	
Drought Stress	
Salt Damage	

Other	
Foliage Discoloration (Light)	
Needlecast (Light)	
Fire	

Other Features	
Major Roads	
Area Not Flown	
County	

Mapped produced by Forest Health Staff
Arizona Zone - 2009
UTM Zone 12, North American Datum 1983

1:280,000

Forest Health Protection (FHP) and the Arizona State Forestry Division strive to maintain an accurate Aerial Detection Survey (ADS) Dataset, but due to the conditions under which the data are collected, FHP and its partners shall not be held responsible for missing or inaccurate data. ADS data are not intended to replace more specific information. An accuracy assessment has not been done for this dataset; however, ground checks are completed in accordance with local and national guidelines: <http://www.fs.fed.us/foresthealth/aviation/qualityassurance.shtml>. Maps and data may be updated without notice. Please cite "USDA Forest Service, Forest Health Protection and Arizona State Forestry Division" as the source of these data in maps and publications.