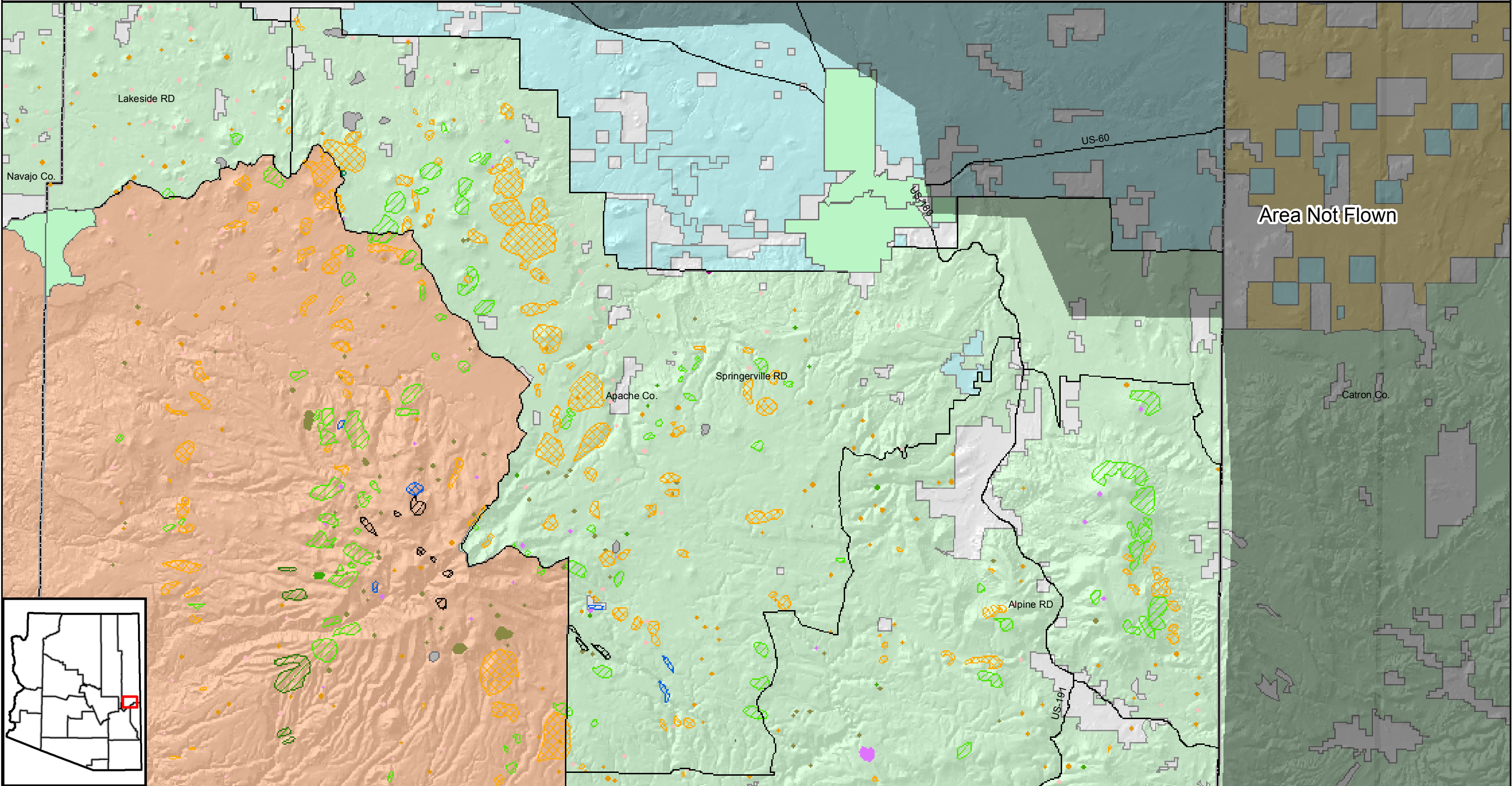


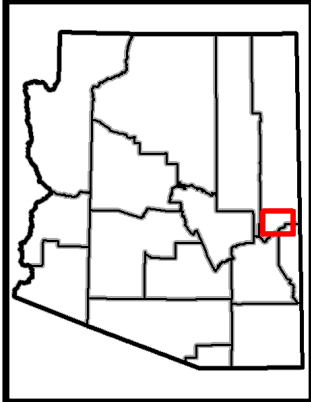


2009 Region 3 Forest Health Protection Insect and Disease Aerial Detection Survey

Apache-Sitgreaves National Forest Springerville Ranger District and Surrounding Area



Area Not Flown



Ownership

- Bureau of Land Management
- Bureau of Reclamation
- County
- Tribal Land
- State
- Military
- National Park Service

Ownership

- Other
- Private
- US Forest Service
- US Fish and Wildlife Service

Mortality

- Roundheaded Pine Beetle (0 ac.)
- Western Pine Beetle (11 ac.)

Mortality

- Doug-fir Beetle (2 ac.)
- Spruce Beetle (0 ac.)
- Western Balsam Bark Beetle (2 ac.)
- Pinyon Ips (1 ac.)
- Ips Engraver (9 ac.)
- Fir Engraver (4 ac.)
- Aspen Mortality (20,872 ac.)

Defoliation

- Unknown Defoliator (Heavy) (180 ac.)
- Unknown Defoliator (Light) (0 ac.)
- Western Spruce Budworm (Light) (177 ac.)
- Western Spruce Budworm (Heavy) (0 ac.)
- Pine Sawfly (Heavy) (0 ac.)
- Pine Sawfly (Light) (0 ac.)
- Nepytia janetae (Light) (0 ac.)

Defoliation

- Nepytia janetae (Heavy) (0 ac.)
- Aspen Defoliation (Heavy) (14 ac.)
- Aspen Defoliation (Light) (0 ac.)

Other

- Chemical Damage (Light) (0 ac.)
- Drought Stress (0 ac.)
- Salt Damage (0 ac.)

Other

- Foliage Discoloration (Light) (0 ac.)
- Needlecast (Light) (0 ac.)

Other Features

- Major Roads
- Area Not Flown
- County

Mapped produced by Forest Health Staff
Arizona Zone - 2009
UTM Zone 12, North American Datum 1983

Scale: 1:300,000

3 1.5 0 3 Miles

Forest Health Protection (FHP) and the Arizona State Forestry Division strive to maintain an accurate Aerial Detection Survey (ADS) Dataset, but due to the conditions under which the data are collected, FHP and its partners shall not be held responsible for missing or inaccurate data. ADS data are not intended to replace more specific information. An accuracy assessment has not been done for this dataset; however, ground checks are completed in accordance with local and national guidelines: <http://www.fs.fed.us/foresthealth/aviation/qualityassurance.shtml>. Maps and data may be updated without notice. Please cite "USDA Forest Service, Forest Health Protection and Arizona State Forestry Division" as the source of these data in maps and publications.