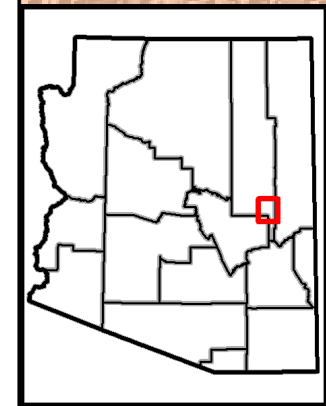
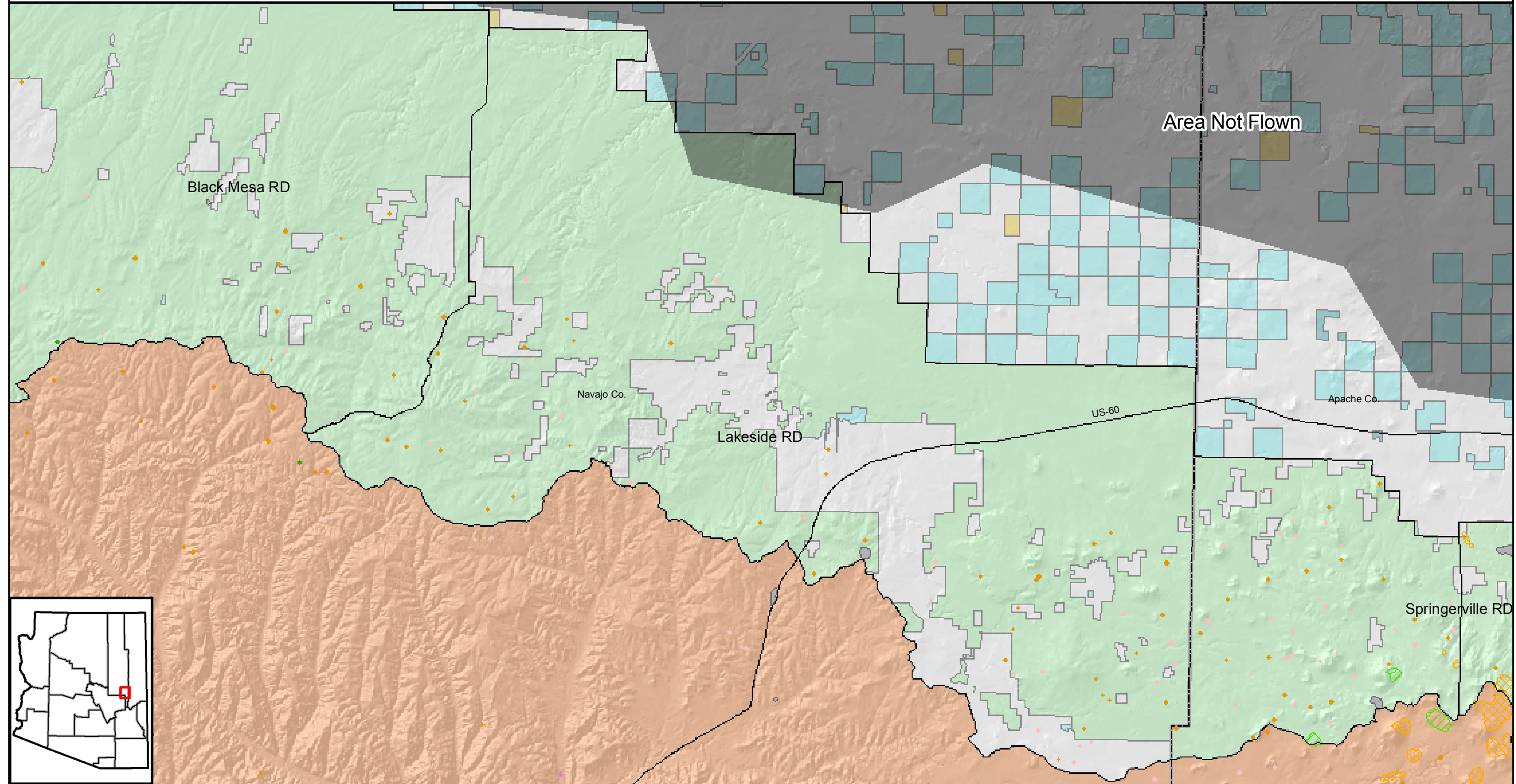




# 2009 Region 3 Forest Health Protection Insect and Disease Aerial Detection Survey

## Apache-Sitgreaves National Forest Lakeside Ranger District and Surrounding Area



<b>Ownership</b> Bureau of Land Management Bureau of Reclamation County Tribal Land State Military National Park Service		<b>Ownership</b> Other Private US Forest Service US Fish and Wildlife Service		<b>Mortality</b> Doug-fir Beetle (0 ac.) Spruce Beetle (0 ac.) Western Balsam Bark Beetle (2 ac.) Pinyon Ips (0 ac.) Ips Engraver (12 ac.) Fir Engraver (0 ac.) Aspen Mortality (210 ac.) Roundheaded Pine Beetle (0 ac.) Western Pine Beetle (13 ac.)		<b>Defoliation</b> Unknown Defoliator (Heavy) (0 ac.) Unknown Defoliator (Light) (0 ac.) Western Spruce Budworm (Light) (0 ac.) Western Spruce Budworm (Heavy) (0 ac.) Pine Sawfly (Heavy) (0 ac.) Pine Sawfly (Light) (0 ac.) Nepytia janetae (Light) (0 ac.)		<b>Defoliation</b> Nepytia janetae (Heavy) (0 ac.) Aspen Defoliation (Heavy) (14 ac.) Aspen Defoliation (Light) (0 ac.)		<b>Other</b> Foliage Discoloration (Light) (0 ac.) Needlecast (Light) (0 ac.) Fire <b>Other Features</b> Major Roads Area Not Flown County		Mapped produced by Forest Health Staff Arizona Zone - 2009 UTM Zone 12, North American Datum 1983 1:200,000 2.5 1.25 0 2.5 Miles		Forest Health Protection (FHP) and the Arizona State Forestry Division strive to maintain an accurate Aerial Detection Survey (ADS) Dataset, but due to the conditions under which the data are collected, FHP and its partners shall not be held responsible for missing or inaccurate data. ADS data are not intended to replace more specific information. An accuracy assessment has not been done for this dataset; however, ground checks are completed in accordance with local and national guidelines: <a href="http://www.fs.fed.us/foresthealth/aviation/qualityassurance.shtml">http://www.fs.fed.us/foresthealth/aviation/qualityassurance.shtml</a> . Maps and data may be updated without notice. Please cite "USDA Forest Service, Forest Health Protection and Arizona State Forestry Division" as the source of these data in maps and publications.	
---	--	---	--	---	--	---	--	--	--	---	--	--	--	--	--