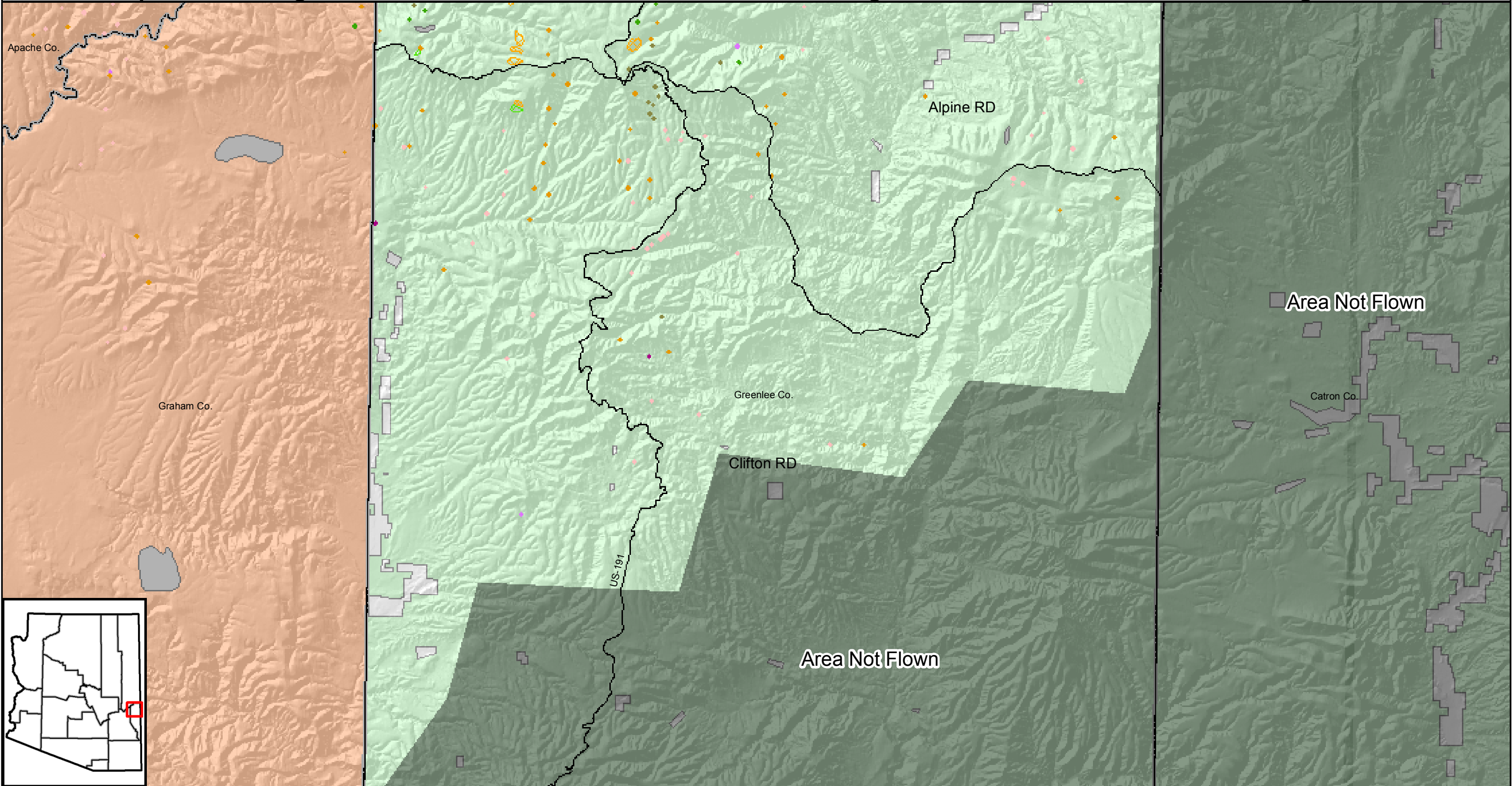




# 2009 Region 3 Forest Health Protection Insect and Disease Aerial Detection Survey

## Apache-Sitgreaves National Forest Clifton Ranger District and Surrounding Area



Ownership	
	Bureau of Land Management
	Bureau of Reclamation
	County
	Tribal Land
	State
	Military
	National Park Service
	Other
	Private
	US Forest Service
	US Fish and Wildlife Service

Mortality	
	Doug-fir Beetle (0 ac.)
	Spruce Beetle (0 ac.)
	Western Balsam Bark Beetle (1 ac.)
	Pinyon Ips (1 ac.)
	Ips Engraver (8 ac.)
	Fir Engraver (2 ac.)
	Aspen Mortality (10 ac.)
	Roundheaded Pine Beetle (0 ac.)
	Western Pine Beetle (6 ac.)

Defoliation	
	Unknown Defoliator (Heavy) (0 ac.)
	Unknown Defoliator (Light) (0 ac.)
	Western Spruce Budworm (Light) (0 ac.)
	Western Spruce Budworm (Heavy) (0 ac.)
	Pine Sawfly (Heavy) (0 ac.)
	Pine Sawfly (Light) (0 ac.)
	Nepytia janetae (Light) (0 ac.)

Defoliation	
	Nepytia janetae (Heavy) (0 ac.)
	Aspen Defoliation (Heavy) (0 ac.)
	Aspen Defoliation (Light) (0 ac.)

Other	
	Chemical Damage (Light) (0 ac.)
	Drought Stress (0 ac.)
	Salt Damage (0 ac.)

Other	
	Foliage Discoloration (Light) (0 ac.)
	Needlecast (Light) (0 ac.)
	Fire

Other Features	
	Major Roads
	Area Not Flown
	County

Mapped produced by Forest Health Staff  
 Arizona Zone - 2009  
 UTM Zone 12, North American Datum 1983

1:175,000

2.5 1.25 0 2.5 Miles

Forest Health Protection (FHP) and the Arizona State Forestry Division strive to maintain an accurate Aerial Detection Survey (ADS) Dataset, but due to the conditions under which the data are collected, FHP and its partners shall not be held responsible for missing or inaccurate data. ADS data are not intended to replace more specific information. An accuracy assessment has not been done for this dataset; however, ground checks are completed in accordance with local and national guidelines: <http://www.fs.fed.us/foresthealth/aviation/qualityassurance.shtml>. Maps and data may be updated without notice. Please cite "USDA Forest Service, Forest Health Protection and Arizona State Forestry Division" as the source of these data in maps and publications.