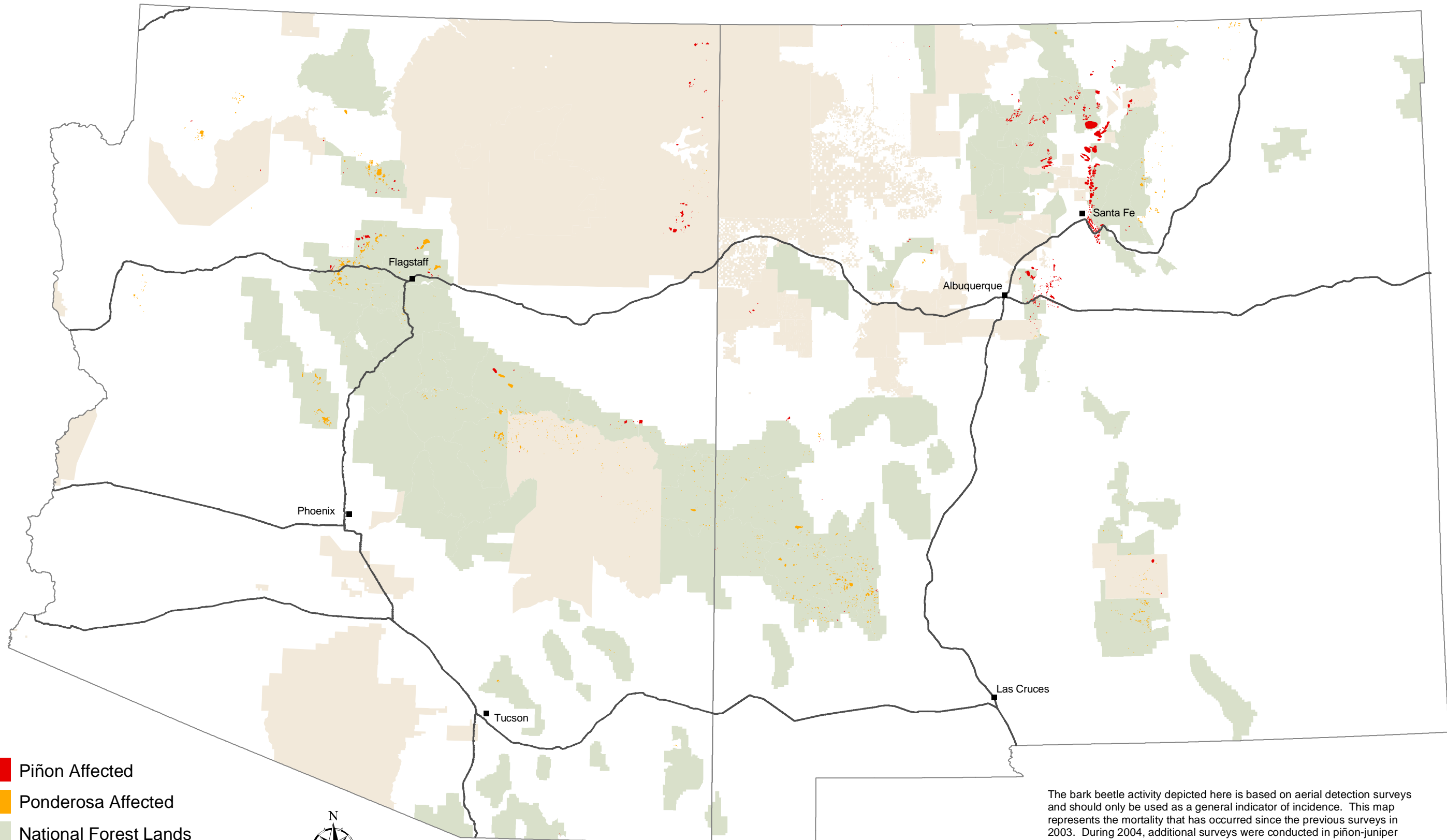
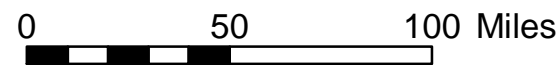


Areas with Bark-Beetle-Caused Piñon and Ponderosa Pine Mortality Arizona and New Mexico, 2004



- Piñon Affected
- Ponderosa Affected
- National Forest Lands
- Tribal Lands
- State Boundary
- Interstate



The bark beetle activity depicted here is based on aerial detection surveys and should only be used as a general indicator of incidence. This map represents the mortality that has occurred since the previous surveys in 2003. During 2004, additional surveys were conducted in piñon-juniper woodlands. Depending upon the timing of survey, the entire extent of bark beetle activity in some areas may not have been detected. Intensity of damage is variable, thus not all trees within a mapped area are dead. Caution should be used in interpreting these results due to the subjective nature of aerial sketchmapping and the scale of mapping. Areas of particular concern should be ground-checked for precise determination of location and casual agent.

