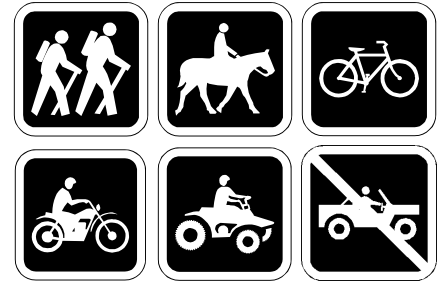




Prescott National Forest

Bradshaw Ranger District
928-771-4700



Seven Mile Gulch Trail — TR 9854

Distance: 3.1 miles (one way)

Considerations:

TR 9854 is open to hikers, horseback riders, mountain bikes, motorcycles, and ATV's. No automobiles, jeeps, or trucks are allowed. Please refrain from using horses or wheeled vehicles when trail is wet.

The trail tread is generally 50 inches wide with a general slope of over 10% and occasional pitches of 20%. Tread is rocky native soil with scattered obstacles of one foot or more over its length. Cross slope varies from 0% to 10%, inconsistently.

Directions:

From downtown Prescott, travel east on Gurley Street which becomes Highway 69 toward Prescott Valley 4.1 miles to Walker Road (County Road 57). Turn south on Walker Road for 1.8 miles to the TR 9854 trailhead parking on the right. Walk to end of old double-track road, and look for trail across the wash to the right.

Facilities:

No rest rooms at Walker Road trailhead. Drinking water is not available at site or on trail

Large improved parking area on the west side of Walker Road.

Trail Highlights:

TR 9854 climbs an open, scrub oak covered hillside for 1.3 miles to Seven Mile Tank. It is generally wide and rocky as it then climbs steeply for 1.0 mile to the junction with TR 62 (Ranch Trail).

It offers panoramic views of the San Francisco Peaks (north), Prescott Valley (northeast), Lynx Lake and Lynx Creek drainage (east), and Spruce Mountain (south).

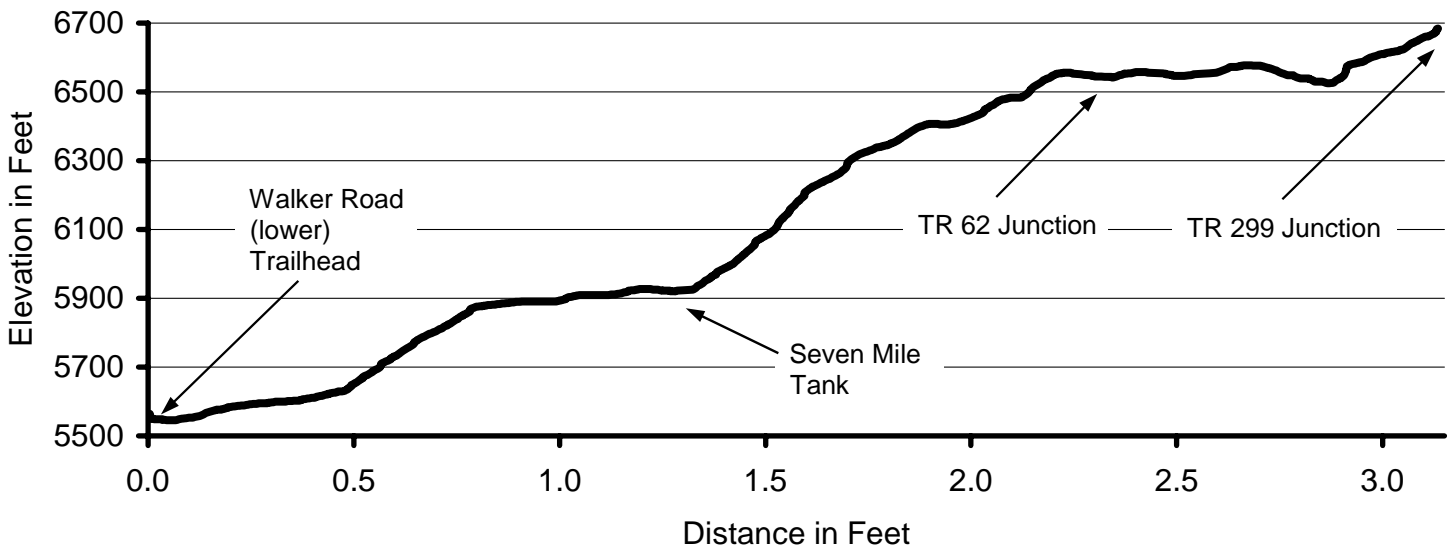
From the TR 62 (Ranch Trail) junction it climbs 200 feet in 0.8 miles to the junction with TR299 (Watershed Trail), with Ponderosa pine forest increasing along the upper portion.

Trail Profile:

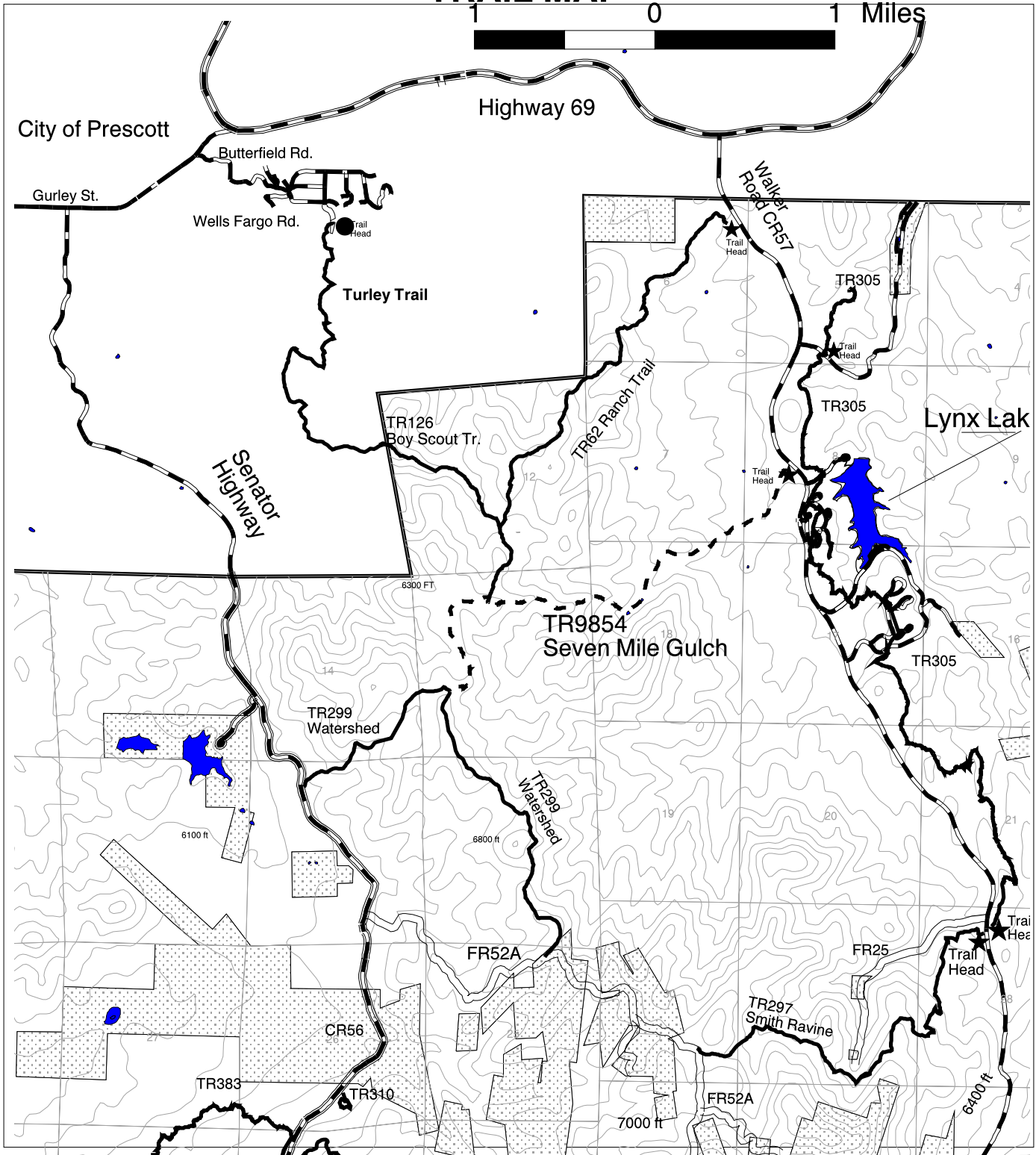
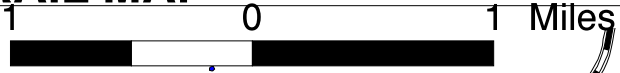
gain = 1160 feet

Topo Map:

USGS topographic 7.5' quad for Prescott.



TRAIL MAP



RESPECT OTHERS RESPECT WILDLIFE LEAVE WHAT YOU FIND DISPOSE OF WASTE PROPERLY

PLAN AHEAD AND PREPARE TRAVEL & CAMP ON DURABLE SURFACES MINIMIZE CAMPFIRE USE



LEGEND	
	TRAIL TR9854
	OTHER TRAIL
	PAVED ROAD
	DIRT ROAD
	NATIONAL FOREST
	PRIVATE PROPERTY
	CONTOUR INTERVAL: 100 ft



Date Created: 06/06/01

Disclaimer: The Forest Service reserves the right to correct, modify, or replace GIS products without notification. This information is not accurate for legal boundary or for navigation purposes; it may not meet National Map Accuracy Standards. The Forest Service assumes no responsibility for the interpretation or application of this data by others.

Prepared by **United States Department of Agriculture Forest Service Southwestern Region Prescott National Forest**

USDA is an equal opportunity provider and employer. To file a complaint of discrimination, write USDA, Director, Office of Civil Rights, Room 326-W, Whitten Building, 14th and Independence Avenue, SW, Washington DC, 20250-9410 or call 202-720-5964 (voice or TTY)