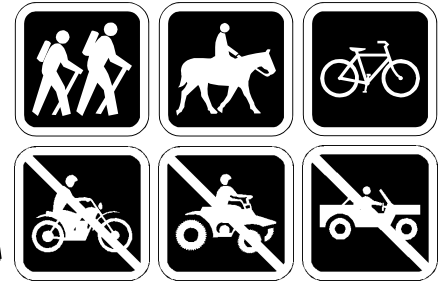




Prescott National Forest

Bradshaw Ranger District
928-771-4700



Groom Creek Loop Trail — TR 307 (fee area)

Distance: 8.7 miles.

Considerations:

TR 307 is open to hikers, horseback riders, and mountain bikes. No motorized vehicles are allowed. Please refrain from using horses or wheeled vehicles when trail is wet.

The trail tread is generally 18-24 inches wide with general slope of over 8% and occasional pitches over 20%. Tread is rocky native soil with scattered obstacles of one foot or more over its length. Cross slope varies from 0% to 10%, inconsistently.

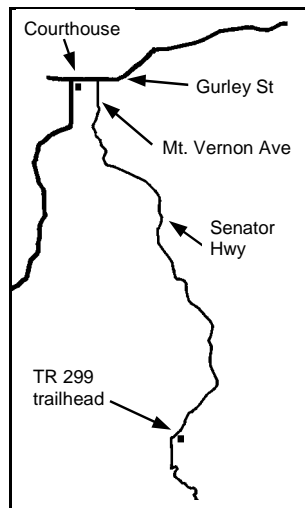
Directions:

From downtown Prescott travel east on Gurley Street 0.3 miles to Mt. Vernon Avenue.

Turn south on Mt. Vernon for 6.4 miles as it becomes the Senator Highway.

The trailhead parking lot is on the east side. The Groom Creek Horse Camp is on the west side.

Access Map:



Facilities:

Rest rooms at trailhead and Spruce Mountain Lookout.

Drinking water is not available at site or on trail. Trailhead has improved parking area for ten cars and six truck/trailer units.

Trail Highlights:

From the north loop at the trailhead, the trail passes through oak and juniper, and one of the best Ponderosa pine stands in the Forest, with fir along the upper reaches. It climbs 1,200 feet over 3 miles through the upper Wolf Creek drainage to the top of Spruce Mountain and the Lookout Tower, where there is a picnic table.

Hikers may visit the Lookout when manned. The Tower offers panoramic views of Prescott and Granite Mountain to the west, and Mingus Mountain and the San Francisco Peaks to the northeast.

The trail turns southwest and follows the South Spruce Ridge for about 1.6 miles to the junction with TR 377 (Isabella Trail), which connects to Walker Road.

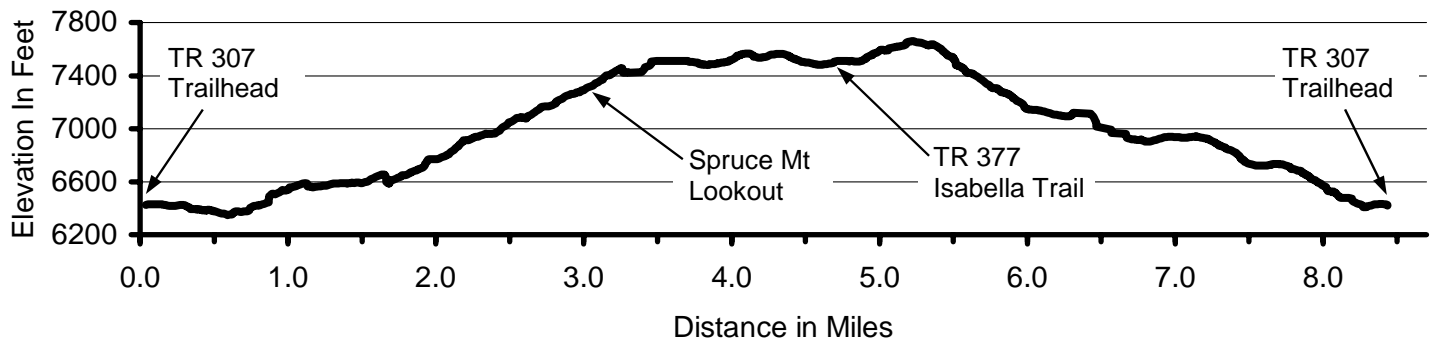
TR 307 then begins a long, twisting descent down the mountain. The final portion bears northwest, crossing several old mining roads on the way to completing the loop back to the Groom Creek trailhead.

Trail Profile:

gain = 1350 feet

Topo Map:

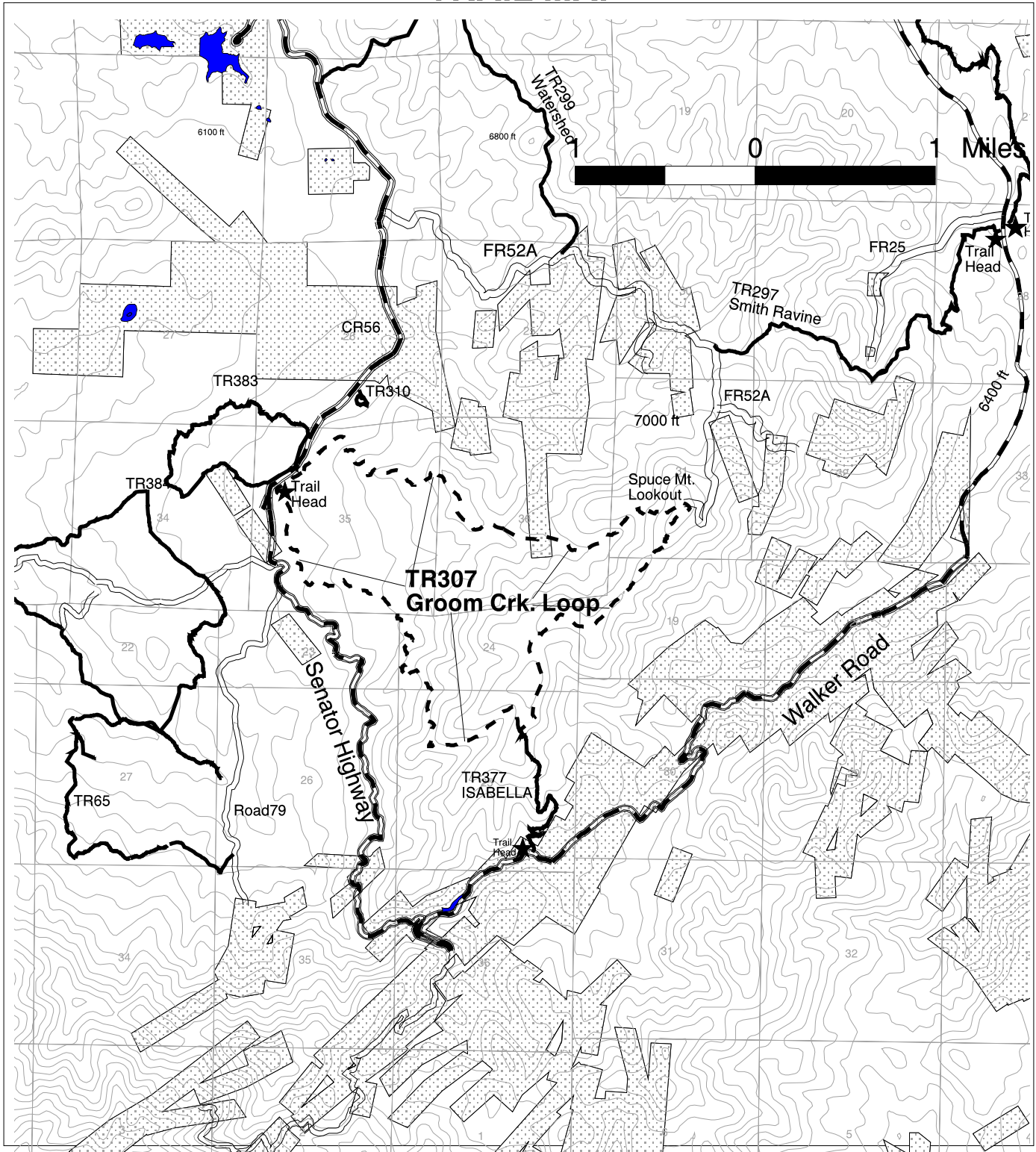
USGS topographic 7.5' quad for Groom Creek.



TRAIL MAP

RESPECT OTHERS RESPECT WILDLIFE LEAVE WHAT YOU FIND DISPOSE OF WASTE PROPERLY

PLAN AHEAD AND PREPARE TRAVEL & CAMP ON DURABLE SURFACES MINIMIZE CAMPFIRE USE



LEGEND	
	TRAIL TR307
	OTHER TRAIL
	PAVED ROAD
	DIRT ROAD
	NATIONAL FOREST
	PRIVATE PROPERTY
	CONTOUR INTERVAL: 100 ft



Date Created: 06/06/01

Disclaimer: The Forest Service reserves the right to correct, modify, or replace GIS products without notification. This information is not accurate for legal boundary or for navigation purposes; it may not meet National Map Accuracy Standards. The Forest Service assumes no responsibility for the interpretation or application of this data by others.

Prepared by **United States Forest Service** Southwestern Region
 Department of Agriculture
 Prescott National Forest

USDA is an equal opportunity provider and employer. To file a complaint of discrimination, write USDA, Director, Office of Civil Rights, Room 326-W, Whitten Building, 14th and Independence Avenue, SW, Washington DC, 20250-9410 or call 202-720-5964 (voice or TTY)