

Scoping Packet

Pre-Commercial Thinning Plan 2010



**Contact:
Greg Roberts
Wrangell Ranger District
P.O. Box 51
525 Bennett St.
Wrangell, AK 99929**

Introduction

The Wrangell Ranger District is proposing to pre-commercially thin areas on the Wrangell Ranger District. The Forest Service is scoping to identify any significant issues related to this project.

Project Locations

The stands which may be thinned are located in the following areas; Woronkofski Island, Zarembo Island, Etolin Island, Shrubby Island, Rynda Island, Wrangell Island, Bushy Island, Deer Island and up the Bradfield River.

Purpose and Need

The purpose and need for the project is to respond to the following Standards and Guidelines identified by the Forest Plan and move the project area toward the desired future condition:

Beach and Estuary Fringe

- *Wildlife habitat restoration of young-growth conifer stands is encouraged to accelerate development of advanced seral stand structure. Treatments may include thinning of young stands, release, pruning, and fertilization.*

Riparian Management Areas

- *Maintain or restore natural and beneficial quantities of Large Woody Debris (LWD) over the short and long-term. Maintain or restore anadromous, alluvial, and high value resident fish habitat capability by providing for natural and beneficial volumes of LWD for rearing and spawning, stream energy dissipation, and sources of organic matter to the stream ecosystem.*

Timber Production

- *Activities include those treatments that improve the composition, health, value and growth of a timber stand for the production of sawtimber and other wood products.*

Wildlife and Old Growth Reserves

- *Continue a young-growth management program to maintain, prolong, and/or improve understory forage production and accelerate forest succession to achieve old growth characteristics in young-growth timber stands for wildlife.*

Pre-commercial Thinning Proposed Action

The proposed action is to pre-commercially thin approximately 7,500 acres over the next several years. See attached maps for stand locations.

We Request Your Input

Information on this project will be posted on our website at:

<http://www.fs.fed.us/r10/tongass/projects/projects.shtml>. You can send comments by email to: comments-alaska-tongass-wrangell@fs.fed.us, include “Thinning” in the subject line. Or send written comments to:

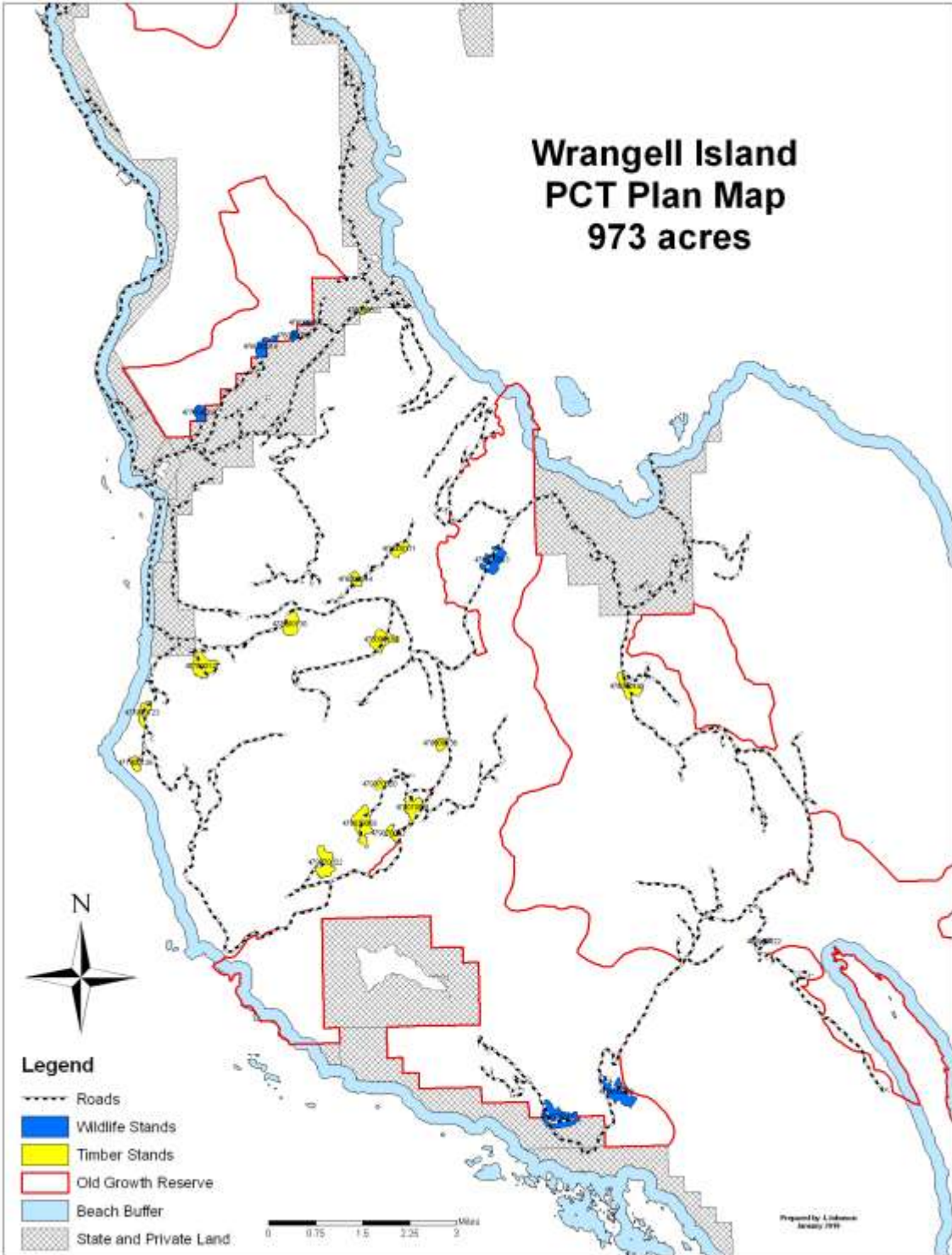
Wrangell Ranger District
c/o Greg Roberts,
P.O. Box 51
Wrangell, AK 99929

Your comments would be most helpful if received before March 19, 2010.

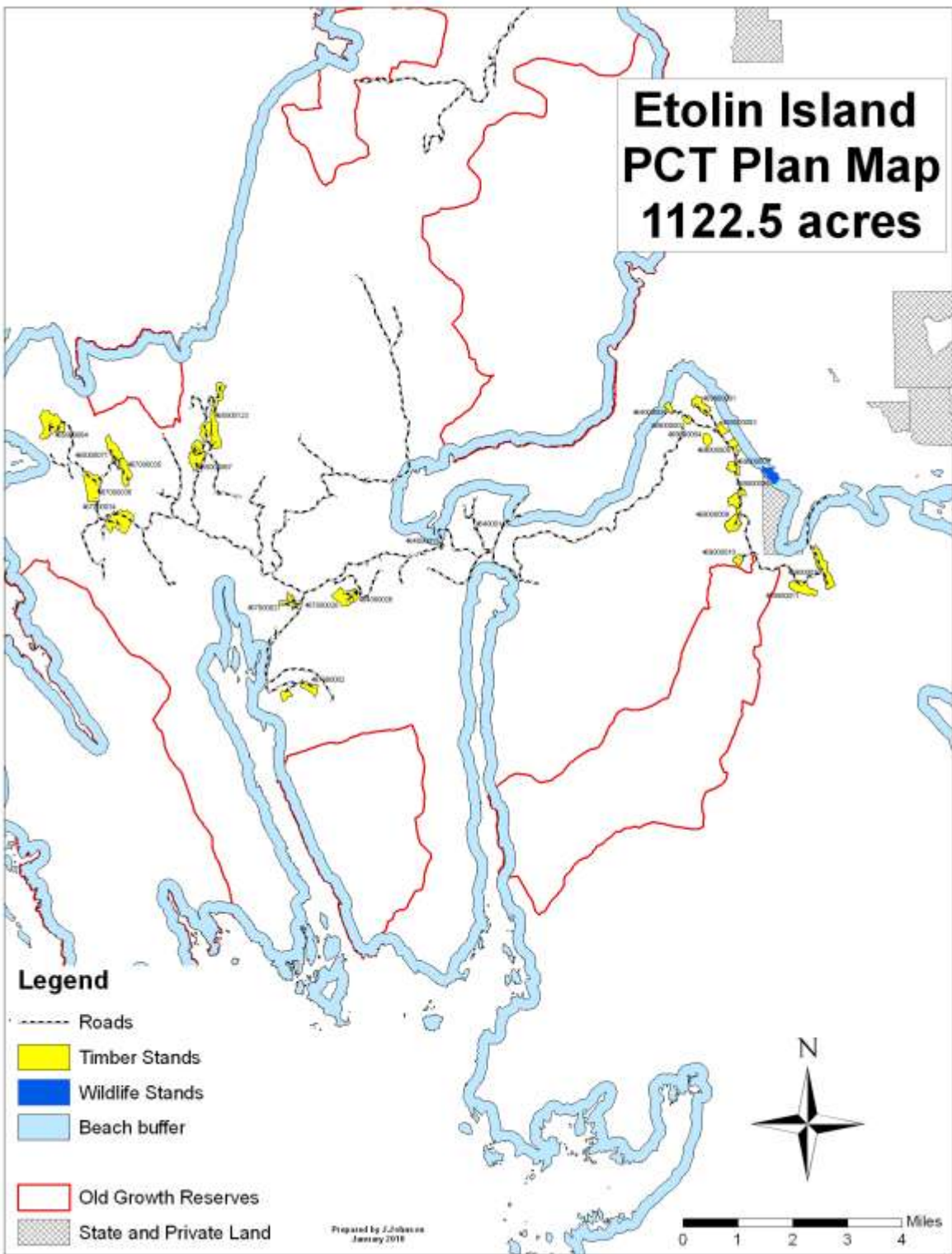
Comments received in response to this solicitation, including names and addresses of those who comment, will be considered part of the public record on this proposed action and will be available for public inspection.

If you have any questions, please contact Greg Roberts at the Wrangell Ranger District Office (907) 874-7558.

Wrangell Island PCT Plan Map 973 acres

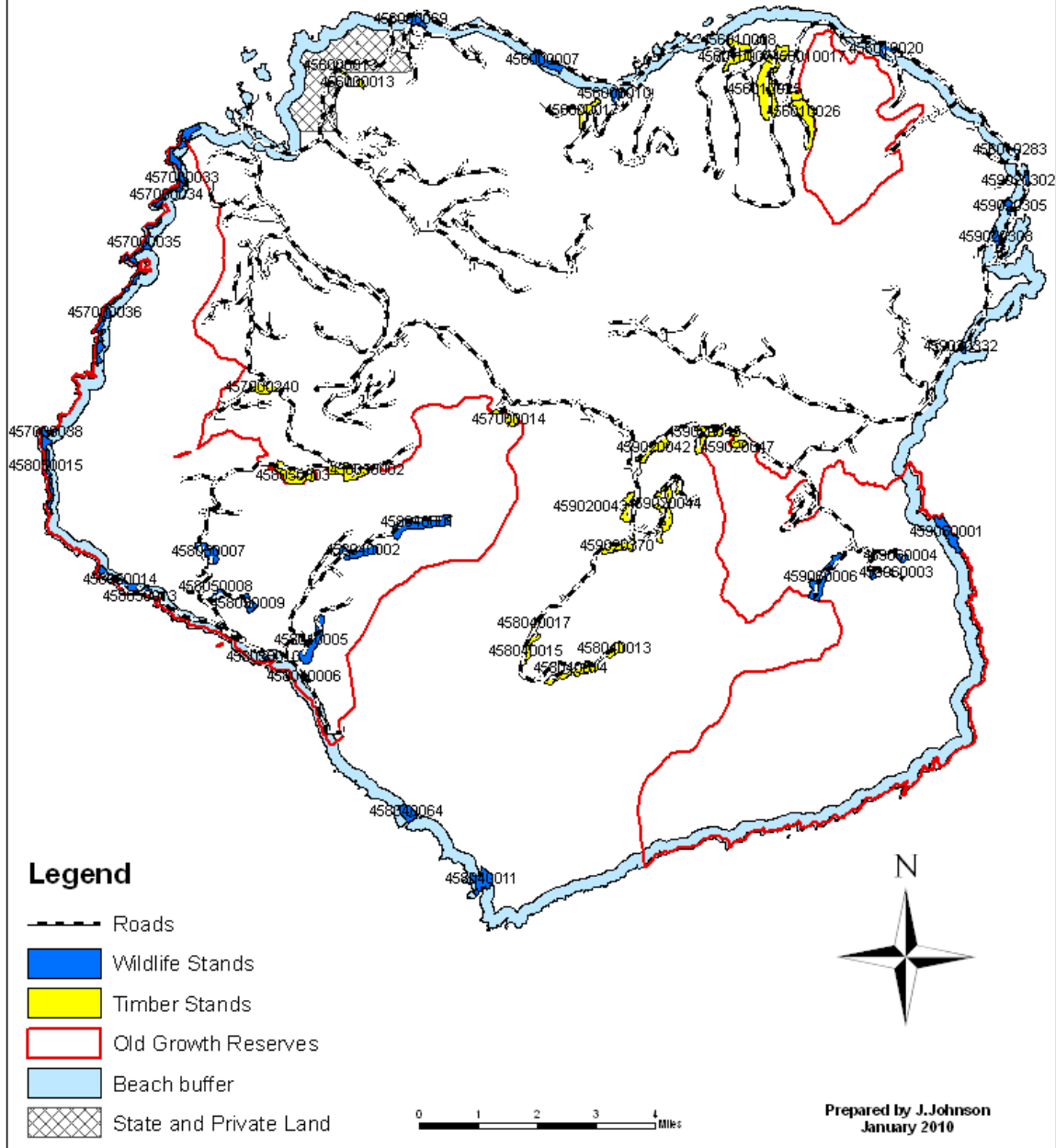


Etolin Island PCT Plan Map 1122.5 acres

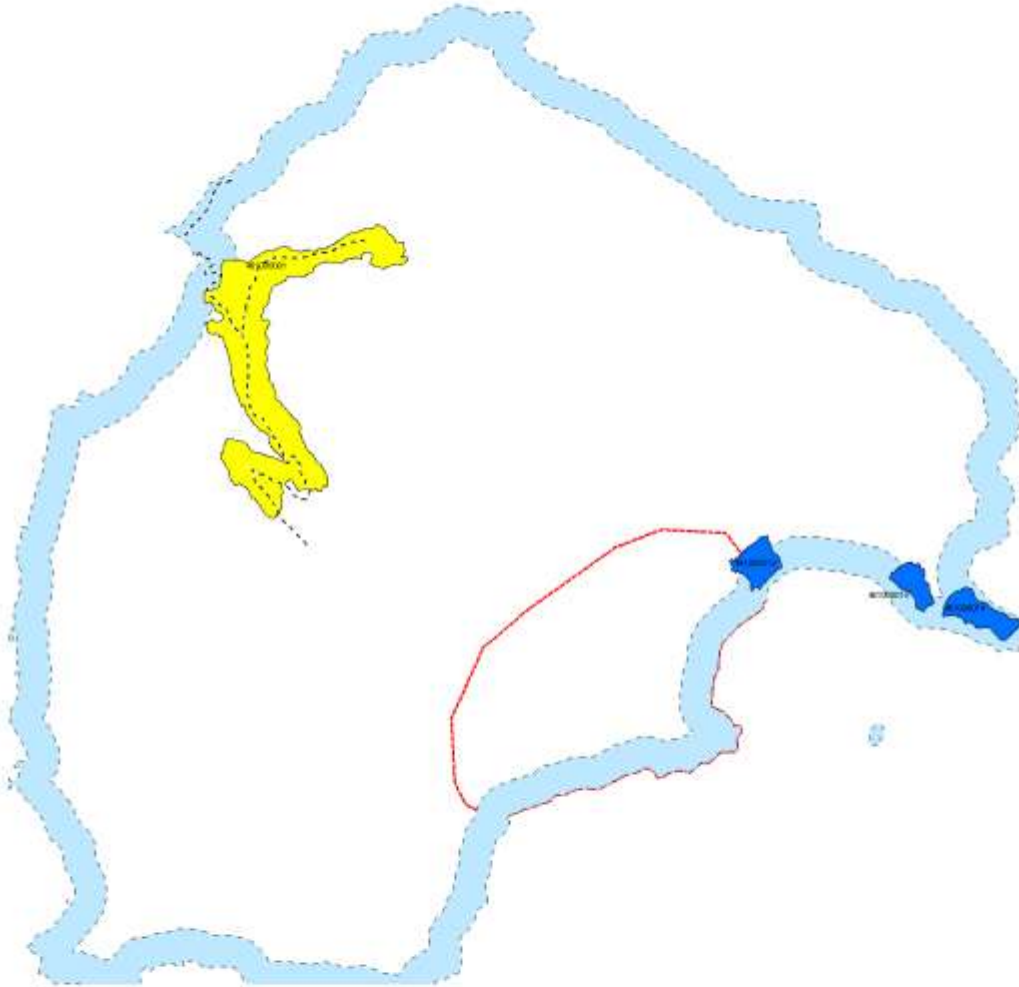


Zaremba Island PCT Map

2,055 acres



Woronkofski Island PCT Plan Map 483 acres



Legend

- Roads
- Timber Stands
- Wildlife Stands
- Old Growth Habitat
- Beach Buffer



Prepared by J. Johnson
January 2010



Rynda Island PCT Plan Map 60 acres



Legend

- Roads
-  Wildlife Stands
-  Beach Buffer

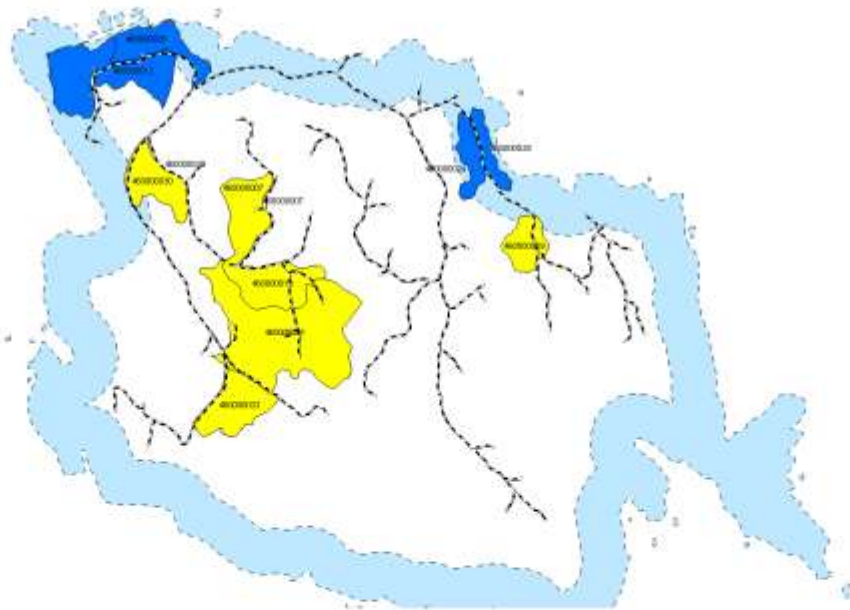
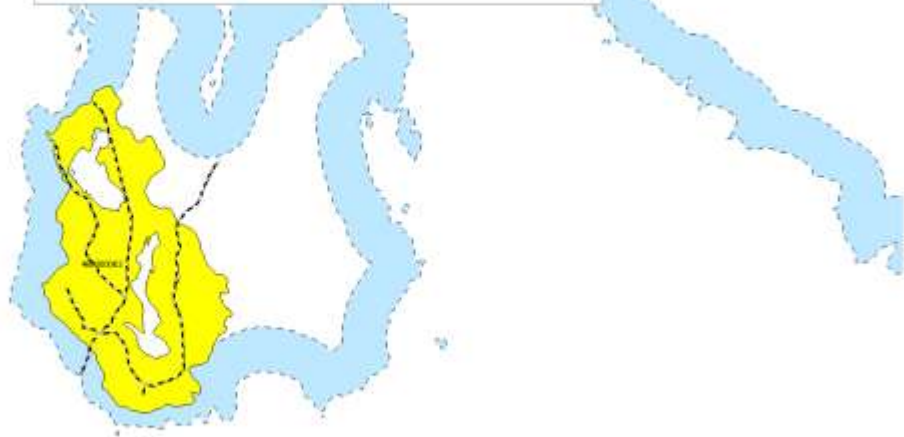


Prepared by L. Johnson
January 2010




0 750 1,500 2,250 3,000 Feet



Bushy/Shrubby Islands PCT Plan Map 924 acres

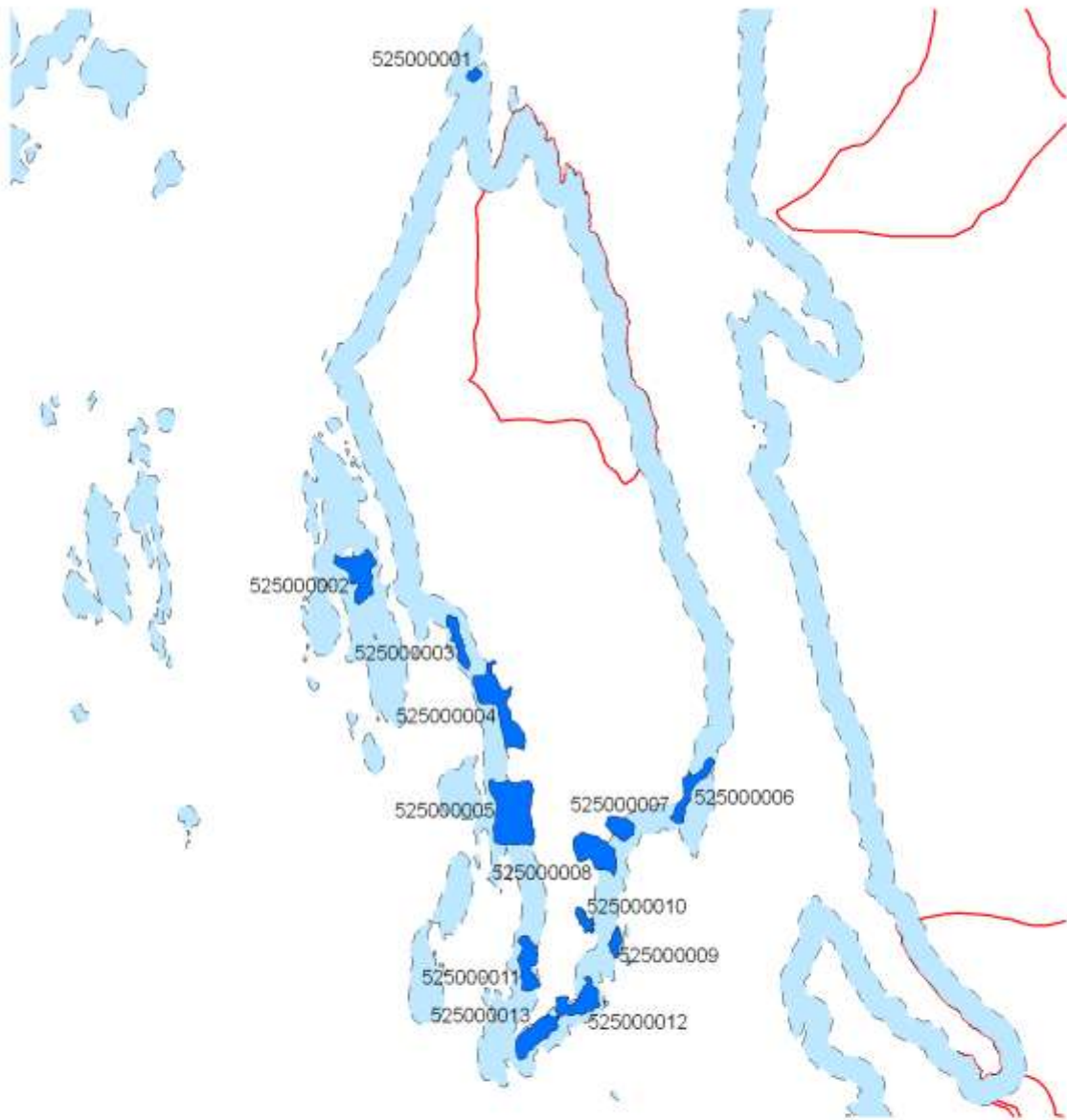


Legend

- Roads
-  Timber Stands
-  Wildlife Stands
-  Beach Buffer



Prepared by J. Johnson
January 2011



Legend

-  Wildlife Stands
-  Beach Buffer
-  Old Growth Reserves

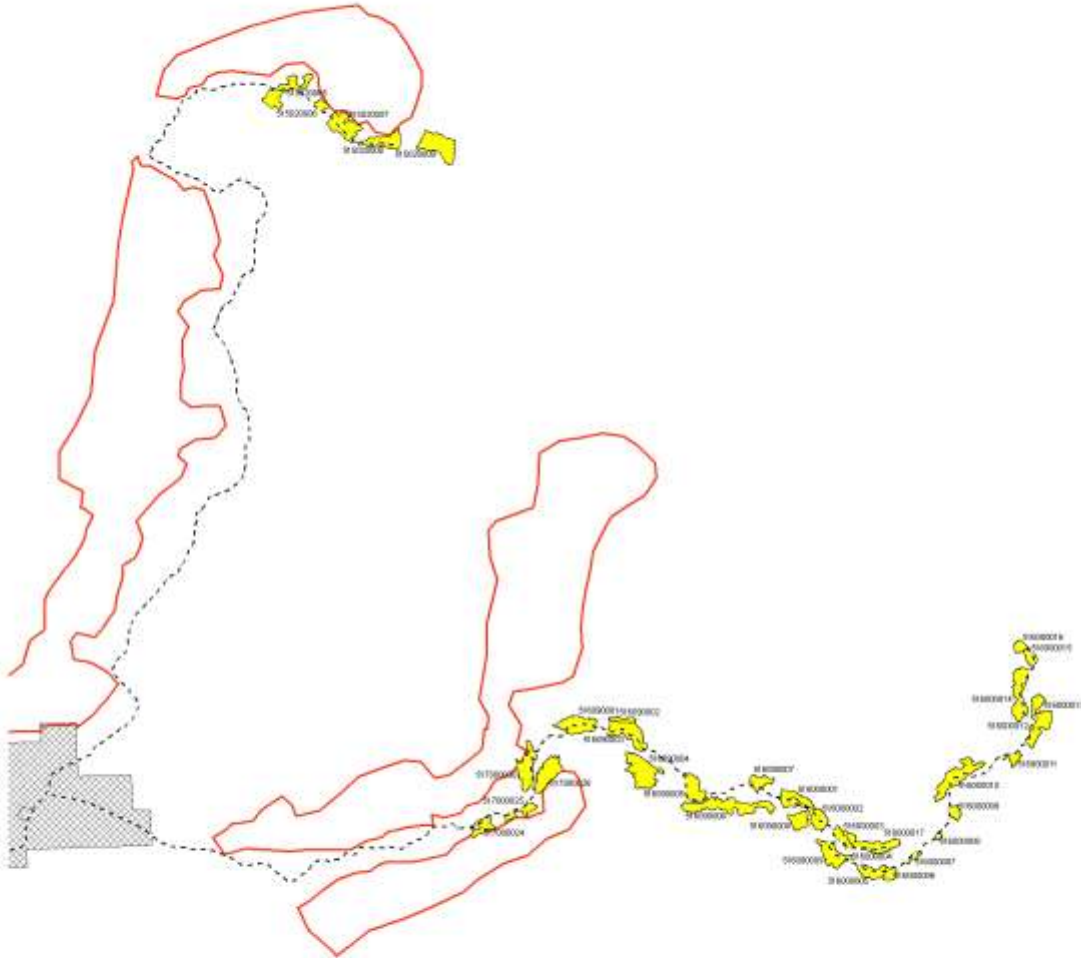
**Deer Island
PCT Plan Map
466 acres**

Prepared by L. Johnson
January 2010



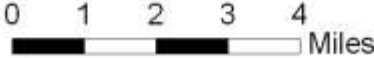
Bradfield PCT Plan Map

1,478 acres



Legend

- Roads
- Timber Stands
- State and Private Land
- Old Growth Habitat
- Beach Buffer



Prepared by J. Johnson
January 2018