

Recreation Opportunity Guide



ONE DUCK TRAIL & SHELTER

Description: The One Duck Trail climbs 1100 feet through a spruce/hemlock forest before it reaches a three-sided shelter in the alpine.



Access: The trailhead is located on the Hydaburg Road (paved) approximately 2½ miles after the Hollis-Klawock Highway intersection. The parking lot is on the west side of the road while the trail starts on the east side.

Distance: 1.25 mile (one way)

Trip Time: 90-120 minutes (one way)

Difficulty: Most Difficult

Elevation Change: 1100 feet

Terrain: The trail is primarily natural tread and boardwalk. Sections of the trail are steep and slippery.

Recommended Seasons

Spring	Summer	Fall	Winter
☺	☺	☺	☺

USGS Map: Craig B-3

Attractions: The One Duck Trail was originally constructed by the Youth Conservation Corps in the mid-1980's. The trail offers a challenging hike, and spectacular views of the Harris River watershed award those who complete it. The maintained trail ends at a three-sided shelter (1,700-ft. elevation) that can sleep four people comfortably. Cross-country hiking, viewing scenery and deer hunting are popular activities in the alpine area. Cross-country skiing and snowshoeing are popular wintertime activities.



Special Considerations: The trail can be extremely hazardous in some places. Moss covered slippery boardwalk and uneven footing is common. Some sections of trail are very steep. The shelter does not require a fee and is available on a first-come, first-serve basis. The Forest Service does not maintain a supply of firewood at the shelter.

Practice Leave No Trace Skills and Ethics

- ✓ *Plan Ahead and Prepare*
- ✓ *Travel and Camp on Durable Surfaces*
- ✓ *Dispose of Waste Properly*
- ✓ *Leave What You Find*
- ✓ *Minimize Campfire Impacts*
- ✓ *Respect Wildlife*
- ✓ *Be Considerate of Other Visitors*



Safety Tips

- ✓ *Discharging firearms is prohibited within 150 yards of cabins and across, or on, a body of water.*
- ✓ *Do NOT feed or approach bears!*
- ✓ *Water for consumption should be treated or boiled.*
- ✓ *Rubber boots, rain gear and insect repellent are recommended.*

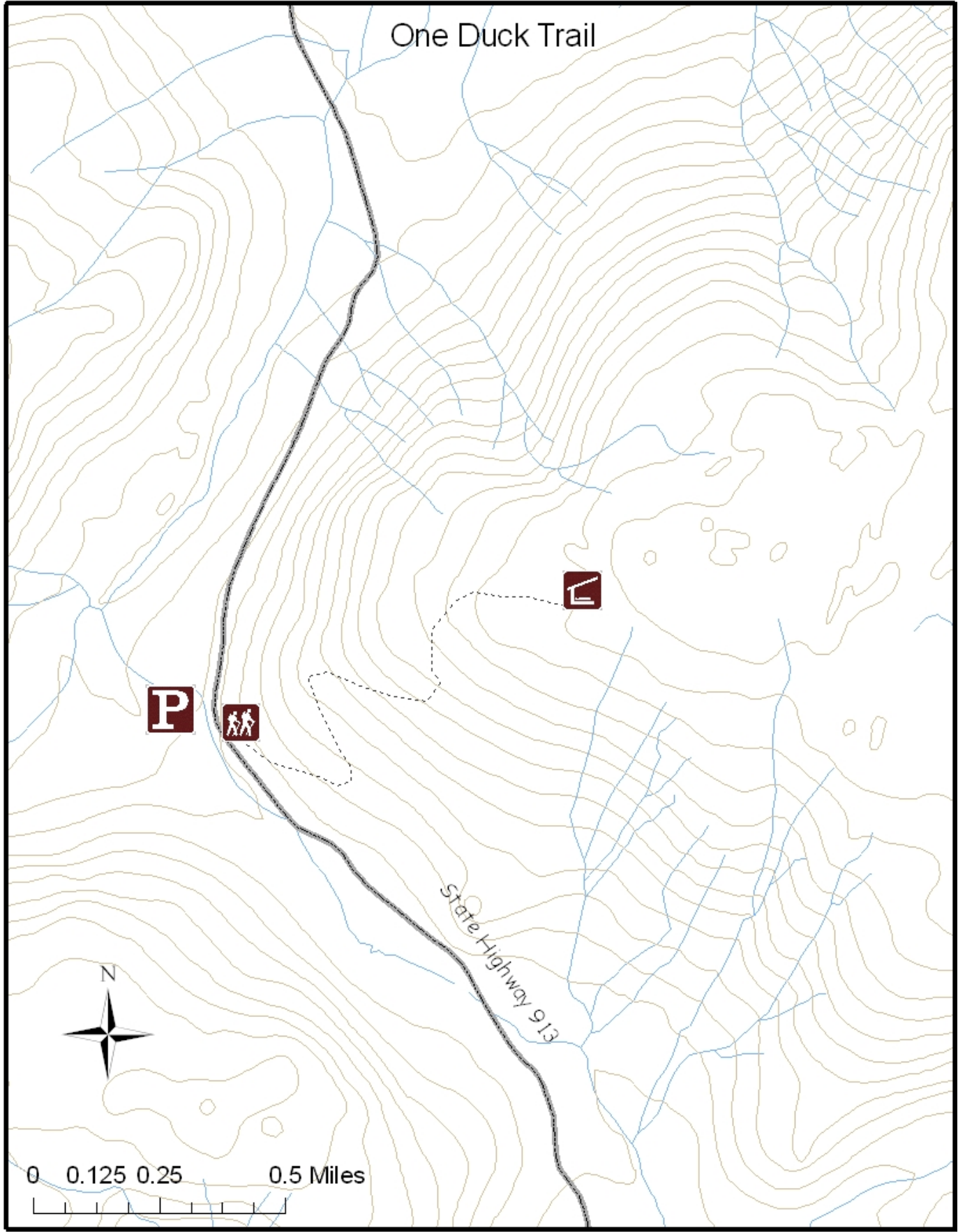


USDA Forest Service
Alaska Region
Tongass National Forest

Craig Ranger District
P.O. Box 500, Craig, AK 99921
(907) 826-3271

TRAIL
51736
2007

One Duck Trail



P



State Highway 913



0 0.125 0.25 0.5 Miles

