

# Recreation Opportunity Guide



## RED BAY LAKE CABIN

**DESCRIPTION:** The 15' X 17' two-story [Pan-Abode](#) log cabin was built in 1999. It has wood stove, second story loft, and sleeping space for six to eight people.



**LOCATION:** The cabin sits on Red Bay Lake on the northern portion of Prince of Wales Island. It is 40 air-miles from Wrangell, 84 air-miles from Ketchikan, and 101 road-miles from Hollis. Refer to USGS topo maps Petersburg A-4 and B-4. Longitude: -133.32; Latitude: 56.24111111

**ACCESS:** Access is mainly by float plane. The cabin can also be reached by vehicle on Forest Road 20, followed by a difficult 0.8 mile hike to the lake (includes fording a stream), and a 1.5-mile row across the lake in the skiff provided. Occasionally poor weather can result in extended stays, and cabin users should be prepared for this. In fall, winter, and early spring, the cabin may be inaccessible due to frozen lake surface (float planes cannot land).

**TERRAIN:** The cabin is at 50 feet elevation on flat ground. The surrounding terrain is gently rolling to very steep. The lake is lined with old growth spruce, hemlock and cedar trees with a dense understory of brush. The vertical wall of Red Bay Mountain (3,042 feet) and surrounding limestone peaks can be seen from the cabin.

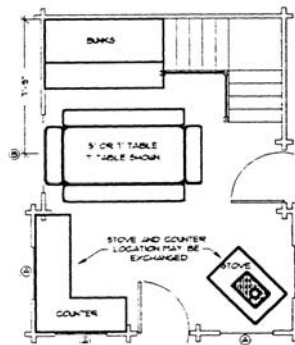
**SPECIAL FEATURES:** This cabin is popular for its sport fish opportunities in the Red Creek drainage. Facing south, the cabin gets a good dose of sunshine on those glorious days when it's not raining! Steep cliffs and rocky outcrops are present all along the lake shore. There are many limestone caves in the vicinity of Red Bay. Loons are commonly heard and seen.

### FACILITIES:

- One single and one double-size sleeping space, sleeping loft
- Wood stove
- Cooking counter, table, shelves, and cupboard space
- Ax/maul/splitting wedges and broom
- 14' aluminum skiff with oars - floatation devices NOT provided
- A natural water source is Red Lake

- \*TREAT OR BOIL WATER BEFORE DRINKING.
- \*BRING YOUR OWN - sleeping bags, sleeping pads, cooking stove, lantern, pots, pans, plates, utensils, food, toilet paper, garbage bags, and fire starter.
- \*WOOD SUPPLY cannot be guaranteed. Please be conservative with wood and use only for heating purposes.

**CABIN LAYOUT:** There may be slight variations.



### RESERVATIONS ARE REQUIRED



Rental Fee: \$45/night May 1-Sept 30  
\$25/night Oct 1-Apr 30



Internet: [www.Recreation.gov](http://www.Recreation.gov)



Call (toll free) 1-877-444-6777



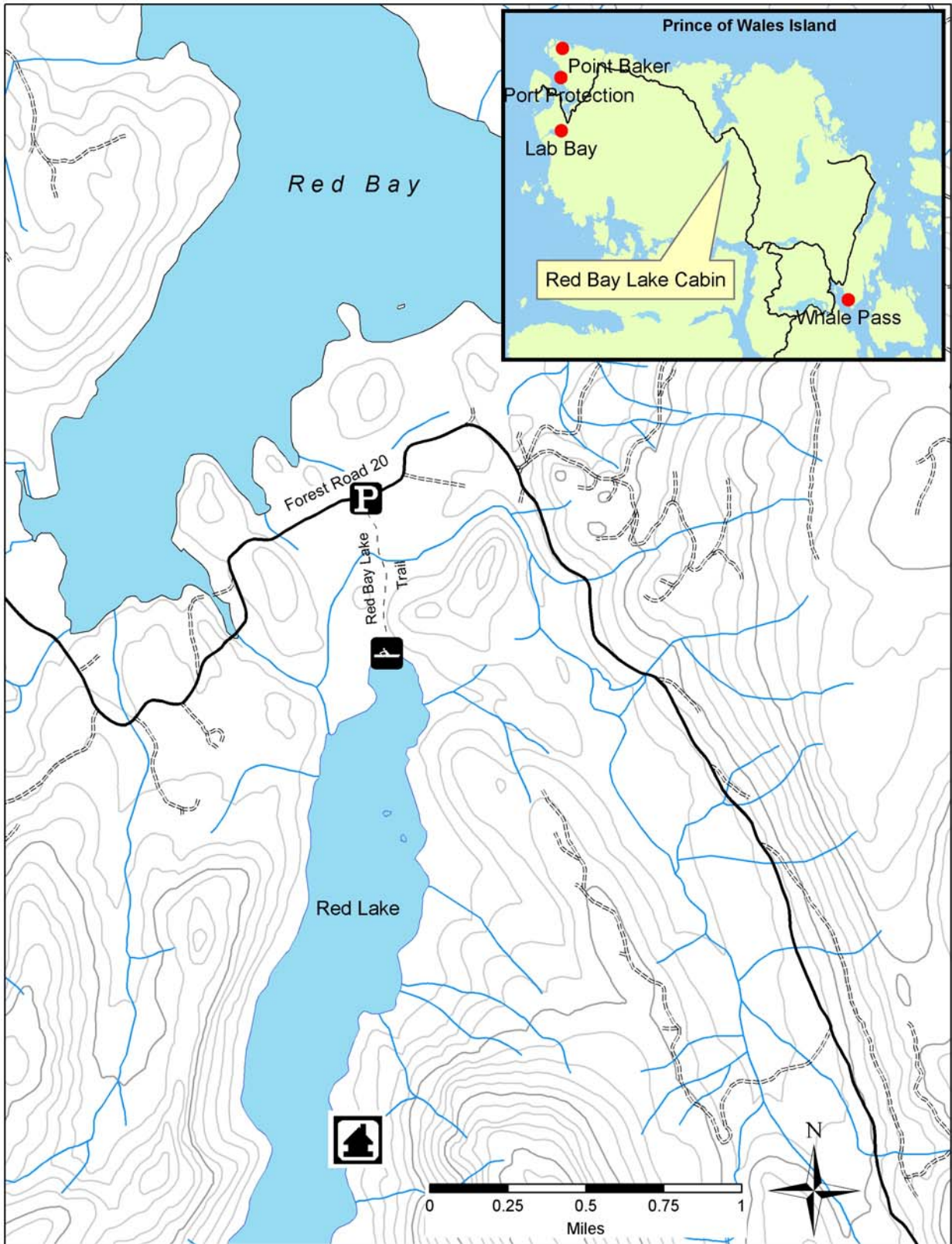
Visit Craig or Thorne Bay district offices for same-day or advance reservations.



USDA Forest Service  
Alaska Region  
Tongass National Forest

Thorne Bay Ranger District  
P.O. Box 19001, Thorne Bay, AK 99919  
(907) 828-3304

CABIN  
T-08/1885  
2007



The Forest Service cannot assure the reliability or suitability of this information for a particular purpose. Original data was compiled from various sources and is the most current data available. Spatial information may not meet National Map Accuracy Standards. This information may be updated, corrected, or otherwise modified without notification. For additional information about this data, contact Tongass National Forest, Thorne Bay Ranger District Office.

Plan ahead and prepare  
Pack it in, pack it out  
Leave what you find



Minimize campfire impacts  
Be considerate of others  
Respect wildlife