

Recreation Opportunity Guide



POINT AMARGURA CABIN

DESCRIPTION: This 15' x 17' cabin with a loft was built in 2008. The cabin accommodates eight people and is available for use throughout the year.



LOCATION: This cabin is located on the south end of San Fernando Island. The site is 8 miles west of Craig and 70 air-miles from Ketchikan. Refer to USGS topo map Craig B-5. Longitude: -133.3577778; Latitude: 55.455

ACCESS: This cabin is typically accessed by boat or skiff from the Craig-Klawock area (refer to Sitka Tide Tables). The cabin can also be accessed by floatplane. The cabin is available for use all year long, however, April through November are often the best months.

A **mooring buoy** is located on the east side of the point. A reservation for a Forest Service cabin does not include exclusive use of the buoy. Buoy use is on a first-come, first-served basis. Mooring of more than one vessel is allowed, provided the first party there agrees.

TERRAIN: The area adjacent to the cabin is level with a Sitka Spruce and Western Hemlock forest predominating; steeper terrain is nearby.

SPECIAL FEATURES: In the late 1790's, a small group of Spanish explorers spent several days on Point Amargura waiting out the weather. Native people have used the point for similar reasons for many years. People today find Point Amargura an excellent place to fish for halibut and bottom fish. Pink, chum, silver, and king salmon can also be abundant. Hunting is favorable and beachcombing is a popular activity.

FACILITIES:

- One single and one double sleeping space downstairs and unfurnished loft above
- Wood stove
- Cooking counter, table, shelves, and cupboard space
- Ax, maul, splitting wedges, broom

*BRING YOUR OWN WATER - there are no freshwater sources close to the cabin.

*BRING YOUR OWN - sleeping bags, sleeping pads, cooking stove, lantern, pots, pans, plates, utensils, food, toilet paper, garbage bags, and fire starter.

*WOOD SUPPLY cannot be guaranteed. Please be conservative with wood and use only for heating purposes.



Rental Fee: \$35/night May 1-Sept 30
\$25/night Oct 1-Apr 30



Call (toll free) 1-877-444-6777

RESERVATIONS ARE REQUIRED



Internet: www.Recreation.gov



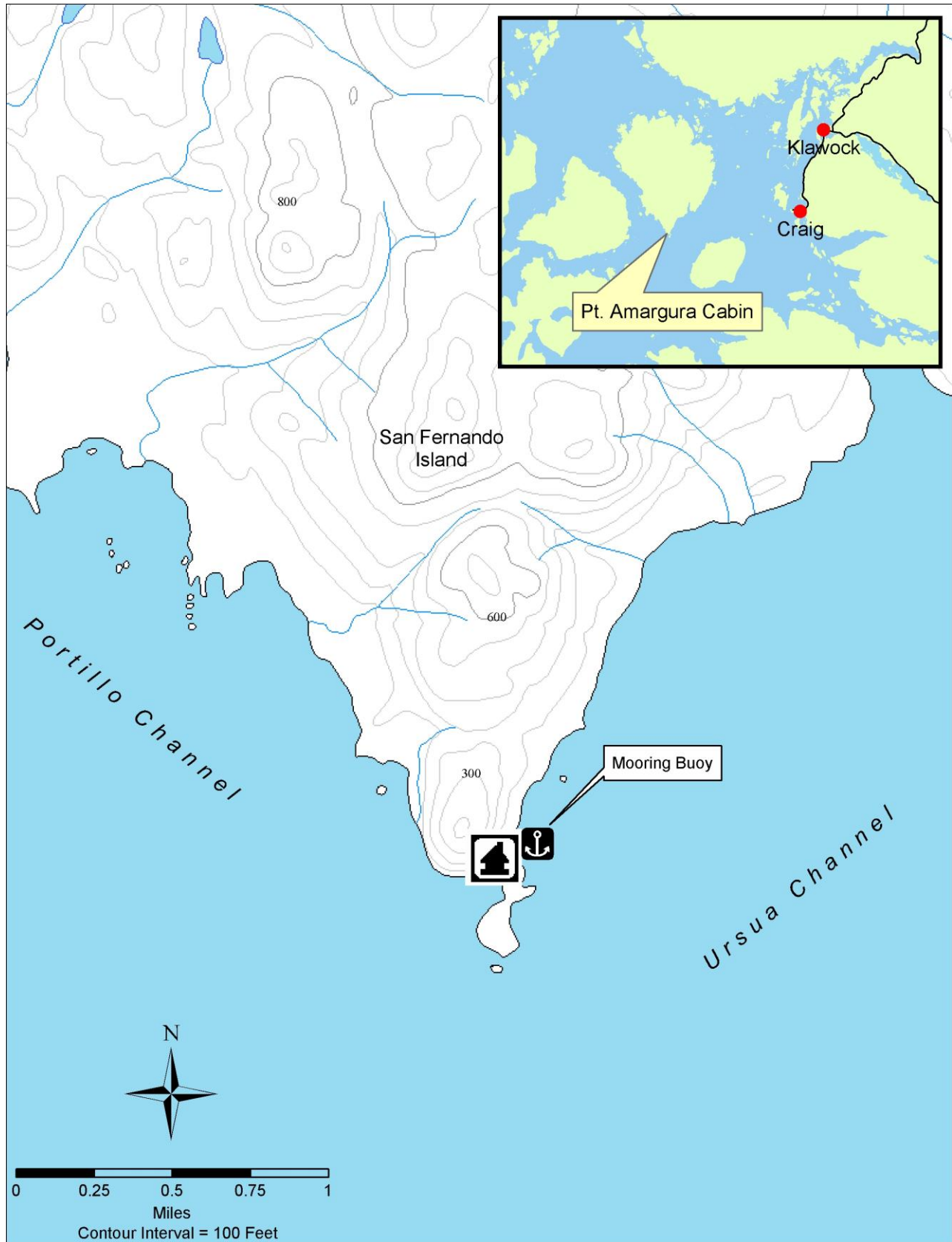
Visit Craig or Thorne Bay district offices for same-day or advance reservations.

USDA Forest Service
Alaska Region
Tongass National Forest

Craig Ranger District
P.O. Box 500, Craig, AK 99921
(907) 826-3271

CABIN
C-06/1752
2007

For more information about Prince of Wales Island, visit: www.fs.fed.us/r10/tongass/districts/pow



The Forest Service cannot assure the reliability or suitability of this information for a particular purpose. Original data was compiled from various sources and is the most current data available. Spatial information may not meet National Map Accuracy Standards. This information may be updated, corrected, or otherwise modified without notification. For additional information about this data, contact Tongass National Forest, Thorne Bay Ranger District Office.

Plan ahead and prepare
Pack it in, pack it out
Leave what you find



Minimize campfire impacts
Be considerate of others
Respect wildlife