

Recreation Opportunity Guide



CONTROL LAKE CABIN

DESCRIPTION: This is a large multi-room structure built in 1969 as a Ranger District office. It is partially furnished with rustic log furniture, has an oil stove, and has sleeping space for six to eight people. The stove uses #1 diesel fuel, NOT supplied by the Forest Service. Please remember to take your fuel container with you when you leave.



LOCATION: The cabin is located on the north shore of Control Lake, central Prince of Wales Island. Control Lake is 41 road-miles from Hollis, 25 road-miles from Craig, and 18 road-miles from Thorne Bay. Refer to USGS topo map Craig C-3. Longitude: -132.8636111; Latitude: 55.69444444

ACCESS: Control Lake is accessed from State Highway 929. The Forest Service provides a small aluminum skiff for boating to the cabin. Floatplanes can land on Control Lake, however, most people drive to the lake and boat to the cabin.

TERRAIN: A large muskeg extends several miles from the west side of the lake. Tree growth is sparse and consists mostly of lodgepole pine in scrub form, looking much like Japanese bonsai. There are small ponds nearby offering nesting habitat for various birds.

SPECIAL FEATURES: Road access makes this cabin popular for staging recreation activities in the area. Within an easy drive is the lower Thorne River, which is excellent for fishing and boating. There are hiking trails nearby, fish and wildlife viewing areas, and day-use areas. Black bears are often sighted near the cabin. They are unpredictable and potentially dangerous to humans, so treat them with respect. The lake has resident populations of cutthroat, dolly varden, and sockeye salmon.

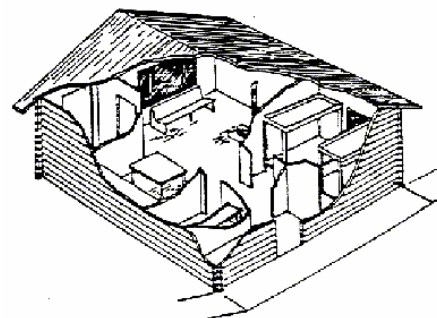
FACILITIES:

- Four single-size sleeping spaces and two doubles
- Oil stove (requires #1 diesel fuel – NOT PROVIDED), highest setting = 0.2 gallons/hour
- Cooking counter, table, and benches
- Broom
- 14' aluminum skiff with oars - floatation devices NOT provided
- A natural water source is Control Lake

*TREAT OR BOIL WATER BEFORE DRINKING.

*BRING YOUR OWN – stove fuel, sleeping bags, sleeping pads, cooking stove, matches, lantern, pots, pans, plates, utensils, food, toilet paper, and garbage bags.

CABIN LAYOUT: There may be slight variations.



RESERVATIONS ARE REQUIRED



Rental Fee: \$45/night May 1-Sept 30
\$25/night Oct 1-Apr 30



Internet: www.Recreation.gov



Call (toll free) 1-877-444-6777



Visit Craig or Thorne Bay district offices for same-day or advance reservations.

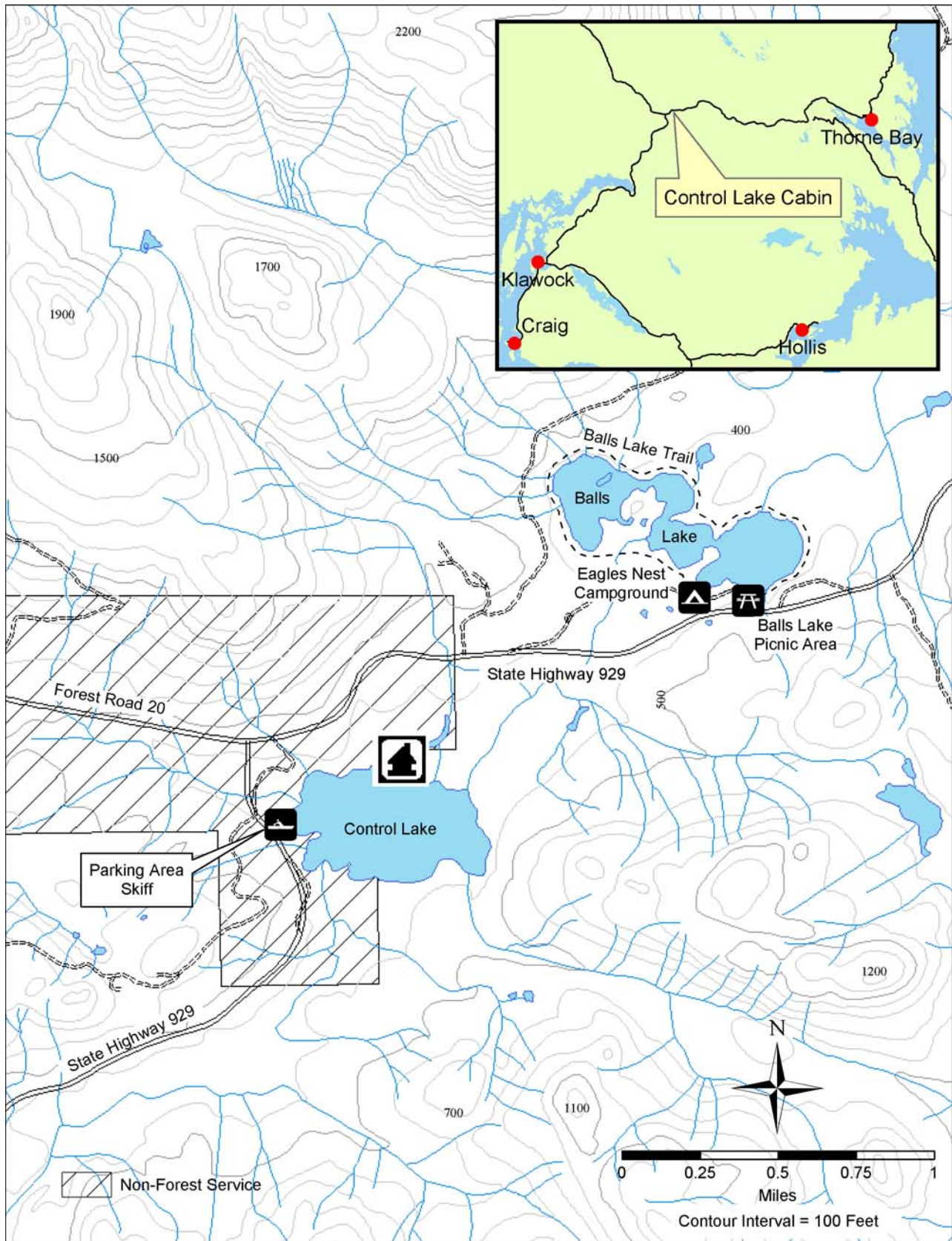


USDA Forest Service
Alaska Region
Tongass National Forest

Thorne Bay Ranger District
P.O. Box 19001, Thorne Bay, AK 99919
(907) 828-3304

CABIN
T-02/1881
2007

For more information about Prince of Wales Island, visit: www.fs.fed.us/r10/tongass/districts/pow



The Forest Service cannot assure the reliability or suitability of this information for a particular purpose. Original data was compiled from various sources and is the most current data available. Spatial information may not meet National Map Accuracy Standards. This information may be updated, corrected, or otherwise modified without notification. For additional information about this data, contact Tongass National Forest, Thorne Bay Ranger District Office.

Plan ahead and prepare
Pack it in, pack it out
Leave what you find



Minimize campfire impacts
Be considerate of others
Respect wildlife