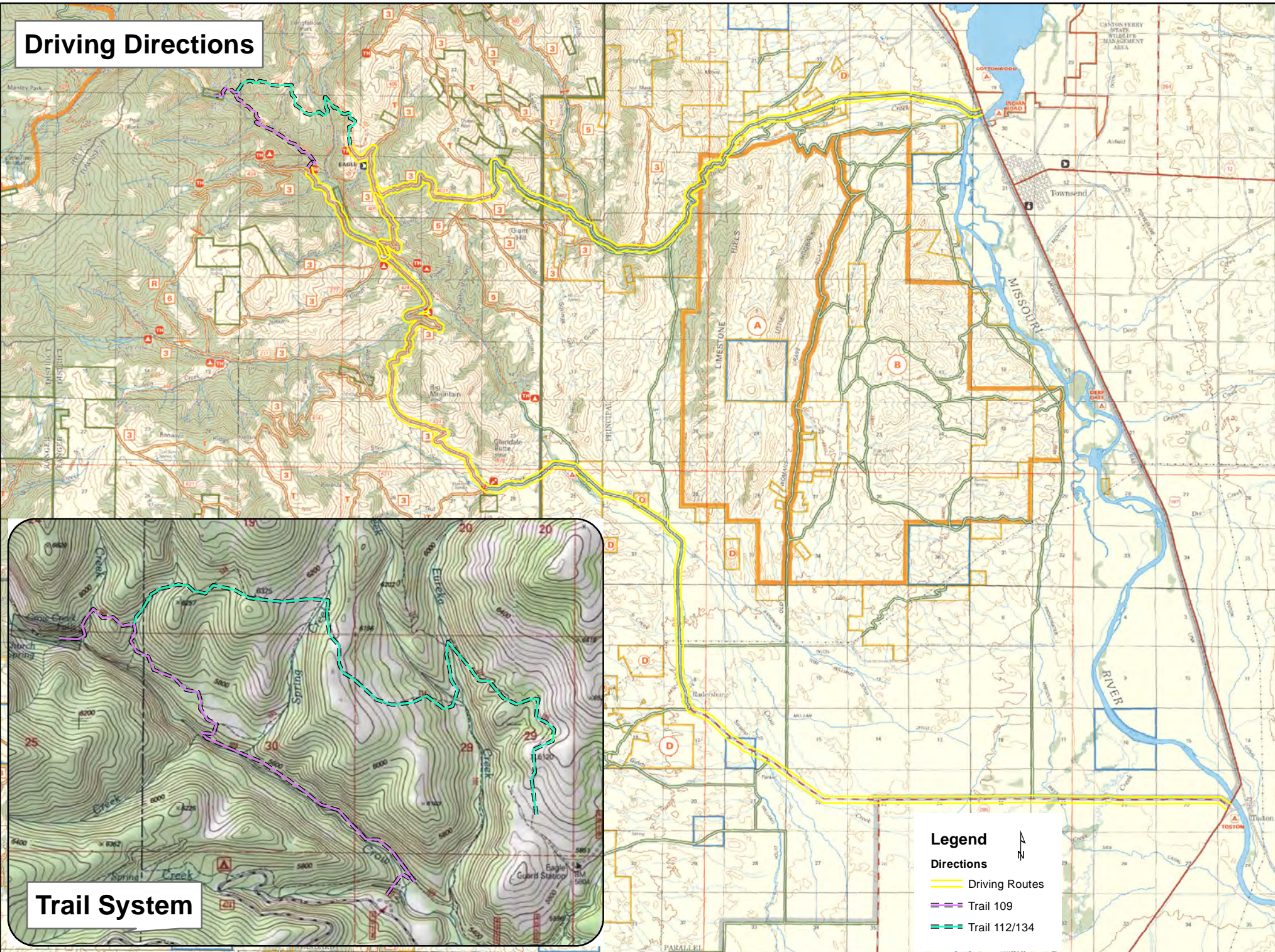


Driving Directions



Trail System

Driving Directions

From Townsend– North on highway 12/287. Turn LEFT after crossing the Missouri River, this is Indian Creek Road/ FS Road #4031, continue to eagle guard station or take FS #405 to FS #424. Follow Trail Options. Can also go south on highway 12/287 and follow the directions from Toston/Radersburg.

From Toston/Radersburg– Take FS Rd #424 to Trailhead, or FS #405 to Eagle guard station. Follow Trail Options.

Trail Options

Hiking Only (some sections would be very difficult with horses)

The shortest route (about 3 miles one way) is to stay on Forest Road 424 (from Radersburg) about 1 mile past the intersection with 405 and 277. Here the road parallels Crow Creek. There is a sign for a trailhead to Trail 109 and a hiker symbol. Parking is available at the trailhead. This is called the “Jump off Trail” because it is a “short cut” down to Crow Creek and Trail 109. Hikers will cross Hall Creek first along this trail and then Crow Creek (on a large log). To get to Crow Creek Falls, turn left after the log crossing. (A right turn will take you along Crow Creek Trail 109 to either Eureka Creek or Eagle Station). Travel west along the creek until you climb a steep hill up to a bench above the creek. Here you will intersect the “road” or trail 135. Take a LEFT again on this road and it is about 1 mile to Crow Creek Falls.

Hiking or Horses- A slightly longer way to reach the falls is to start at the Trailhead above eagle Guard Station (112/101). After crossing Eureka Creek, go LEFT on Trail 101 to the intersection with “Falls Creek trail 134”. Take a right onto 134. Trail 134 intersects the “road” called Trail 135” and stays perpendicular to 135 as it climbs up a steep sagebrush park (the trail is difficult to find through the park). From the top of the park, the trails is very easy to follow. It intersects 109 and the road is very near Crow Creek Falls. From the intersection, go RIGHT. This is about a 4 mile trip one way.

Townsend Ranger District
415 South Front Street
Townsend, MT 59644
(406)266-3425

Directions to Crow Creek Falls

