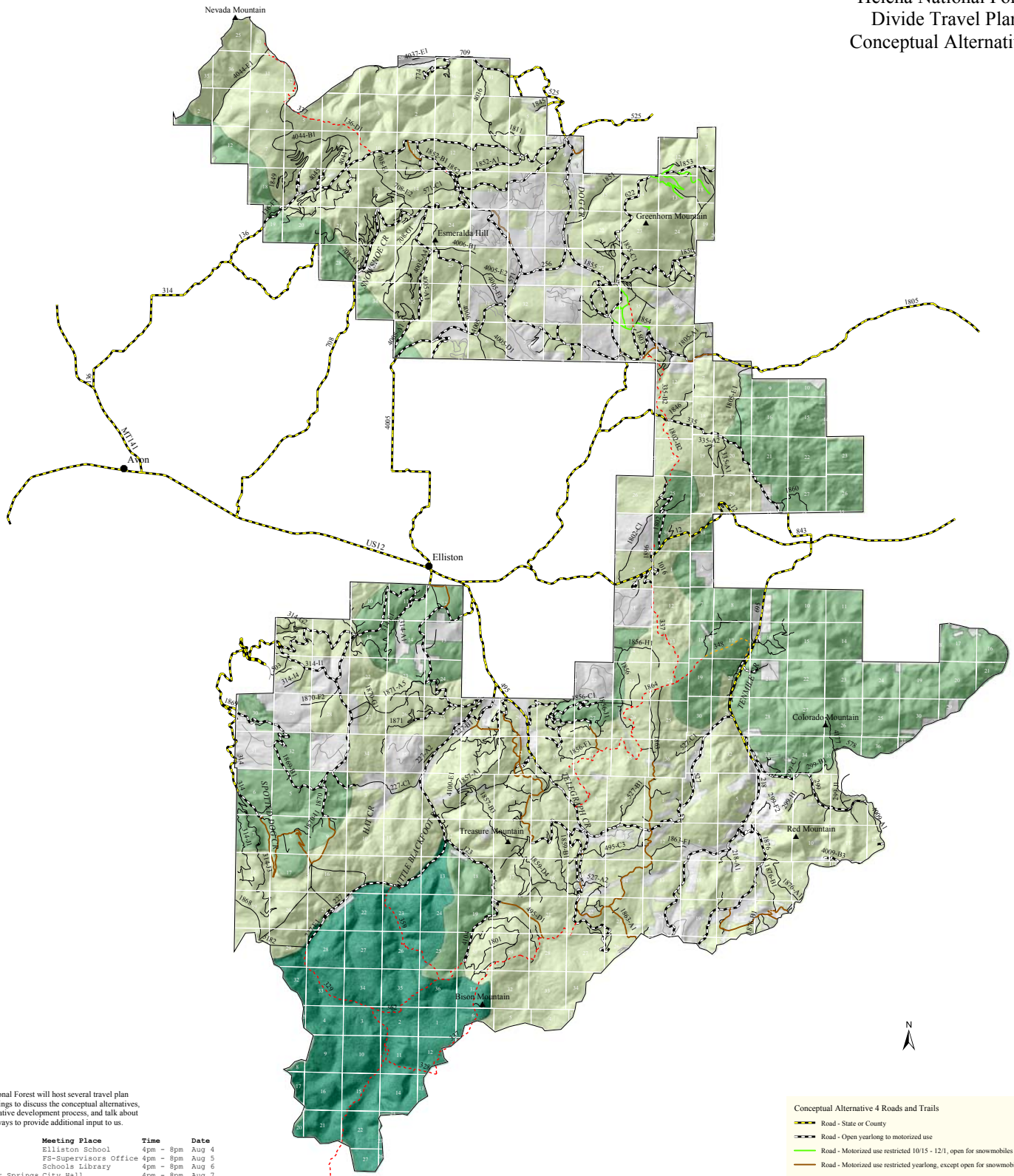


# Helena National Forest Divide Travel Plan Conceptual Alternative 4



The Helena National Forest will host several travel plan open house meetings to discuss the conceptual alternatives, review the alternative development process, and talk about the most useful ways to provide additional input to us.

Community	Meeting Place	Time	Date
Elliston	Elliston School	4pm - 8pm	Aug 4
Helena	FS-Supervisors Office	4pm - 8pm	Aug 5
Townsend	Schools Library	4pm - 8pm	Aug 6
White Sulphur Springs	City Hall	4pm - 8pm	Aug 7
Lincoln	Community Center	4pm - 8pm	Aug 13 & Sept 3
Helmsville	Community Hall	4pm - 8pm	Aug 19
Marysville	School House	4pm - 8pm	TBA

To confirm these open house meeting dates and locations, or check for additional meetings or field trips, you may contact the Helena National Forest Supervisors Office, any of our Ranger District Offices, or the Helena National Forest web site (<http://www.fs.fed.us/r1/helena/projects>)

Map Scale 1:84,480



- Conceptual Alternative 4 Roads and Trails**
- Road - State or County
  - Road - Open yearlong to motorized use
  - Road - Motorized use restricted 10/15 - 12/1, open for snowmobiles 12/2
  - Road - Motorized use restricted yearlong, except open for snowmobiles 12/2
  - Road - Motorized use restricted yearlong
  - Trail - Proposed non motorized
  - Trail - Non motorized use only
  - Private or other
  - Area open for snowmobile use 12/2 - 5/15
  - Area restriction for snowmobile use except on open, or designated routes
  - Proposed Wilderness motorized use restricted yearlong