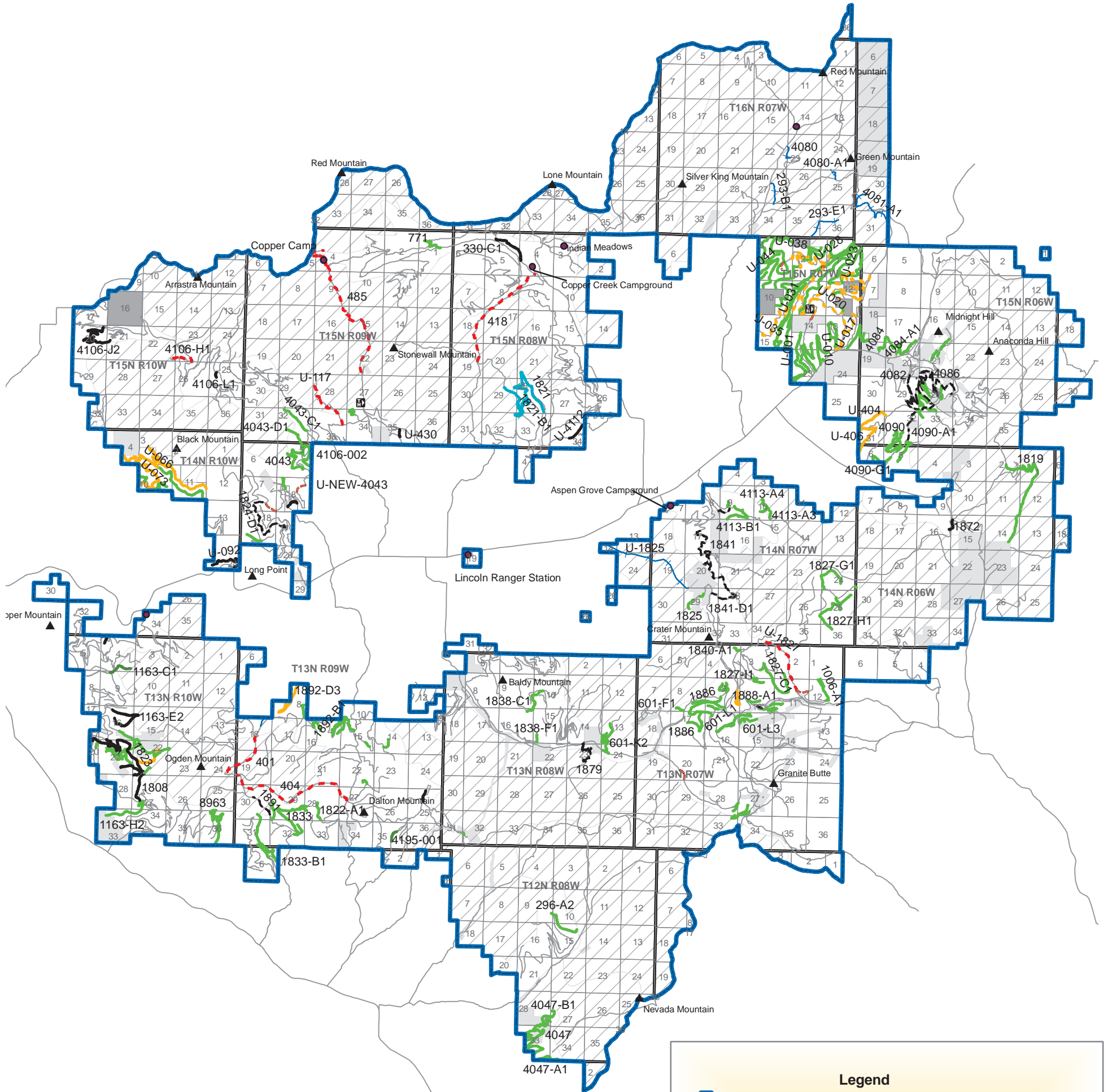


Helena National Forest Lincoln Ranger District Blackfoot Travel Plan Proposed Action - Changes from Existing Condition

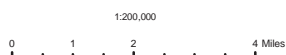


Legend

- Project Area Boundary
- Proposed Action Changes To Existing Condition**
- Alternative 2**
- Open Highway Legal Vehicles
- 09-Closed to wheeled motorized use 10/15-6/30, open for snowmobile use 12/2 to season ending date
- 11-Closed to wheeled motorized use 9/1-6/30, open for snowmobile use 12/2 to season ending date
- 12-Closed to wheeled motorized use 9/1-6/30, closed to snowmobile use yearlong
- 01-Closed to motorized use yearlong - Storage
- 01-Closed to motorized use yearlong
- Obliterate
- New Construction
- Motorized System Trail - Open to vehicles less than 50" in width, no seasonal restrictions
- Motorized System Trail - Open to vehicles less than 50", closed to wheeled motorized use 9/1-6/30
- Non-Motorized System Trail
- Existing Condition No Change on Proposed Action
- Proposed Trailheads
- Inventoried Roadless Areas
- Ownership**
- National Forest Service Land
- State Land
- Private Land

Disclaimer:
The Forest Service uses the most current and complete data available. GIS data and product accuracy may vary. They may be developed from sources of differing accuracy, accurate only at certain scales, based on modeling or interpretation, incomplete while being created or revised, etc. Using GIS products for purposes other than those for which they were created may yield inaccurate or misleading results. The Forest Service reserves the right to correct, update, modify or replace GIS products without notification. For more information contact:

Helena National Forest
2880 Skyway Drive
Helena, Montana 59602
406-449-5201



11/15/2010