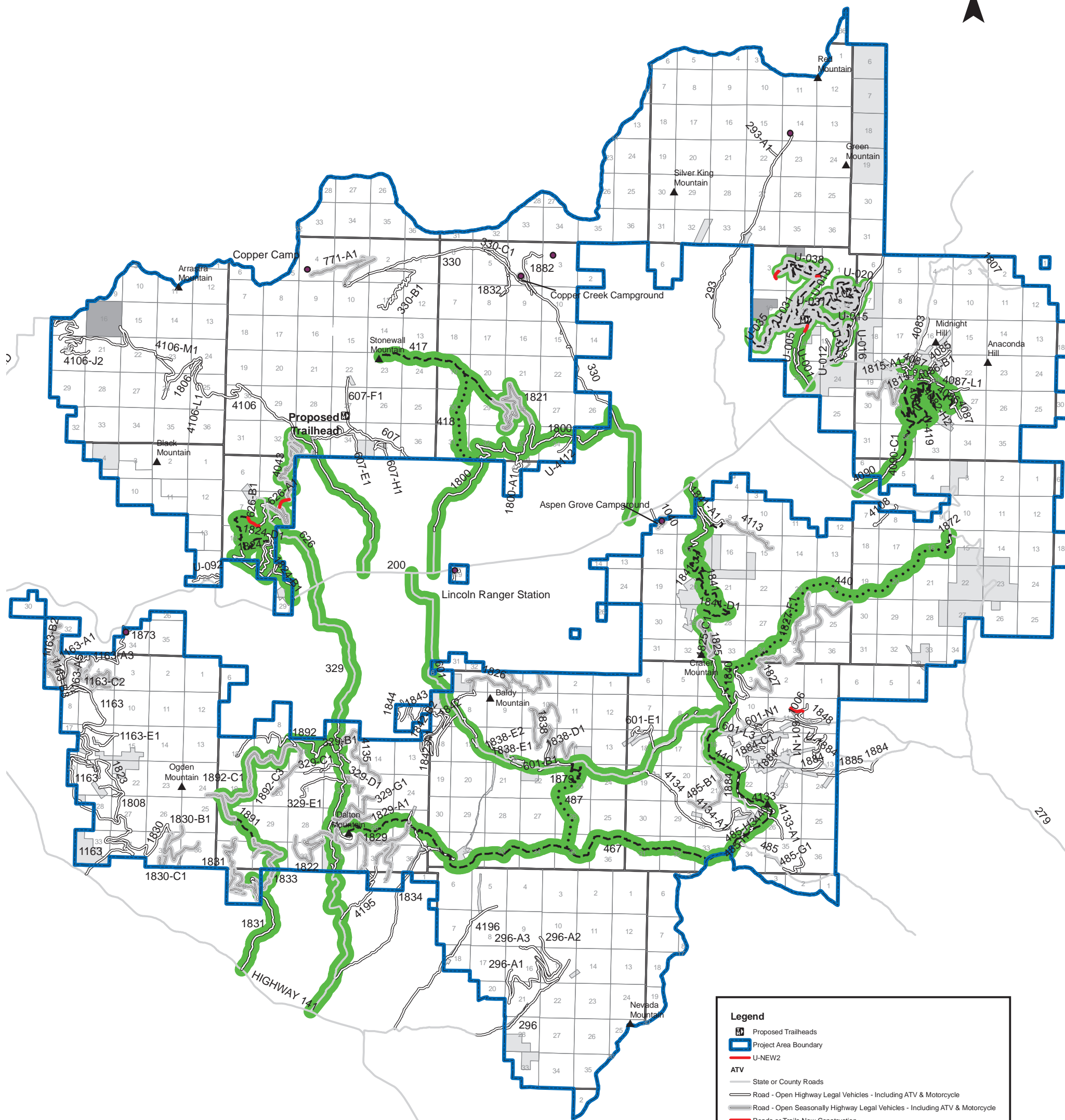


**Helena National Forest  
Lincoln Ranger District  
Blackfoot Travel Plan - Proposed Action  
Motorized Trail Routes & Opportunities**



**Legend**

- Proposed Trailheads
- Project Area Boundary
- U-NEW2
- ATV**
- State or County Roads
- Road - Open Highway Legal Vehicles - Including ATV & Motorcycle
- Road - Open Seasonally Highway Legal Vehicles - Including ATV & Motorcycle
- Roads or Trails New Construction
- Motorized Trail - Open to vehicles 50" or less in width
- Motorized Trail - Open to vehicles 50" or less in width (Seasonal Restrictions)
- Motorized Trail - Motorcycle Only
- Motorized Trail Routes & Opportunities
- Ownership**
- Forest Service Land
- State Land
- Private Land

Disclaimer:  
The Forest Service uses the most current and complete data available. GIS data and product accuracy may vary. They may be developed from sources of differing accuracy, accurate only at certain scales, based on modeling or interpretation, incomplete while being created or revised, etc. Using GIS products for purposes other than those for which they were created may yield inaccurate or misleading results. The Forest Service reserves the right to correct, update, modify or replace GIS products without notification. For more information contact:

Helena National Forest  
2880 Skyway Drive  
Helena, Montana 59602  
406-449-5201

1:180,000



11/15/2010 as