

SPECIAL AREA RESTRICTION
Nez Perce-Clearwater National Forests

ORDER

Pursuant to Title 36 CFR 261.50 (a) and (b), the following act is prohibited on the National Forest System area and trails described in this Order, within the administrative and proclaimed boundaries of the Red River and Moose Creek Ranger Districts, Nez Perce -Clearwater National Forests. This Order will become effective immediately, and will remain in effect until rescinded.

1. Going into or being upon the fire area (as described below). **36 CFR 261.53(e)**
2. Traveling on National Forest System roads or portions of roads as described below). **36 CFR 261.54(e)**

EXEMPTIONS

Pursuant to 36 CFR 261.50(e), the following persons are exempt from this Order:

1. Persons with a special use authorization or other Forest Service authorization specifically exempting them from the effect of this Order.
2. Any Federal, State, or local law enforcement officer, or member of an organized rescue or fire fighting force in the performance of an official duty.
3. Federal or State administrative personnel in the performance of an official duty.

ROAD CLOSURE: Forest Road 285 is closed

Forest Road 285 from its Junction with Forest Road 468 to its terminus at the Elk Mountain Trailhead.

All Boundary Trails are open, and are identified as follows:

Forest Trail # 541
Forest Trail # 505
Forest Trail # 668
Forest Trail # 615
Forest Trail # 726
Forest Trail # 517
Forest Trail # 529 portion of trail in the Selway-Bitterroot Wilderness
Forest Trail # 533 portion of the trail on the Bitterroot National Forest
Forest Trail # 532
Forest Trail # 539
Forest Trail # 581
Forest Trail # 502

AREA CLOSURE DESCRIPTION

The East Fork Fire area starting from the junction of Forest Roads 285 & 285A follow Forest Road 285A in northwest direction to its junction with Forest Trail 541, then follow Forest Trail 541 in a northwest direction to its junction with Forest Trail 505, then follow Forest Trail 505 in a northerly direction to its junction with Forest Trail 668. Then follow Forest Trail 668 in a northerly direction to its junction with Forest Trail 615, then follow Forest Trail 615 to its terminus NESW1/4 Sec. 8, T29N, R11E, then continue along Matteson Ridge to its junction with Meadow Creek , then cross Meadow Creek and follow Forest Trail 726 in a northerly direction to its junction with Forest Trail 517, then follow Forest Trail 517 in a northerly direction to its junction with the boundary of the Selway-Bitterroot Wilderness , then follow the Selway-Bitterroot Wilderness in a southeasterly direction to its junction with Forest Trail 529, then follow Forest Trail 529 to Archer Mountain, from Archer Mountain follow the Red River Ranger District boundary in a Southeasterly direction to its junction with the boundary of the Selway- Bitterroot Wilderness at the junction of Forest Trails 532 & 70, then follow Forest Trail 532 in a southern direction to its junction with Forest Trail 539, then follow Forest Trail 539 in a southern direction to its junction with Forest Trail 581, then follow Forest Trail 581 in a westerly direction to its junction with Forest Trail 502, then follow Forest Trail 502 in a northerly direction to its junction with Forest Road 285, then follow Forest Road 285 in a westerly direction to its junction with Forest Road 285A; the point of origin.

RATIONALE: The area and trails are closed for public health, safety and protection from hazards associated with wildfire and suppression efforts related to the East Fork Fire.

PENALTY: Any violation of this order is punishable by a fine of not more than \$5,000 for an individual or \$10,000 for an organization, and/or imprisonment for not more than six months [Title 16 USC 551, Title 18 USC 3571(b)(6), Title 18 USC 3581 (b)(7), and/or appropriate State laws].

NOTIFICATION: A copy of this order shall be posted in the Forest Supervisor's Office and each District Ranger's Office, and other appropriate locations as prescribed under Title 36 CFR 261.51.

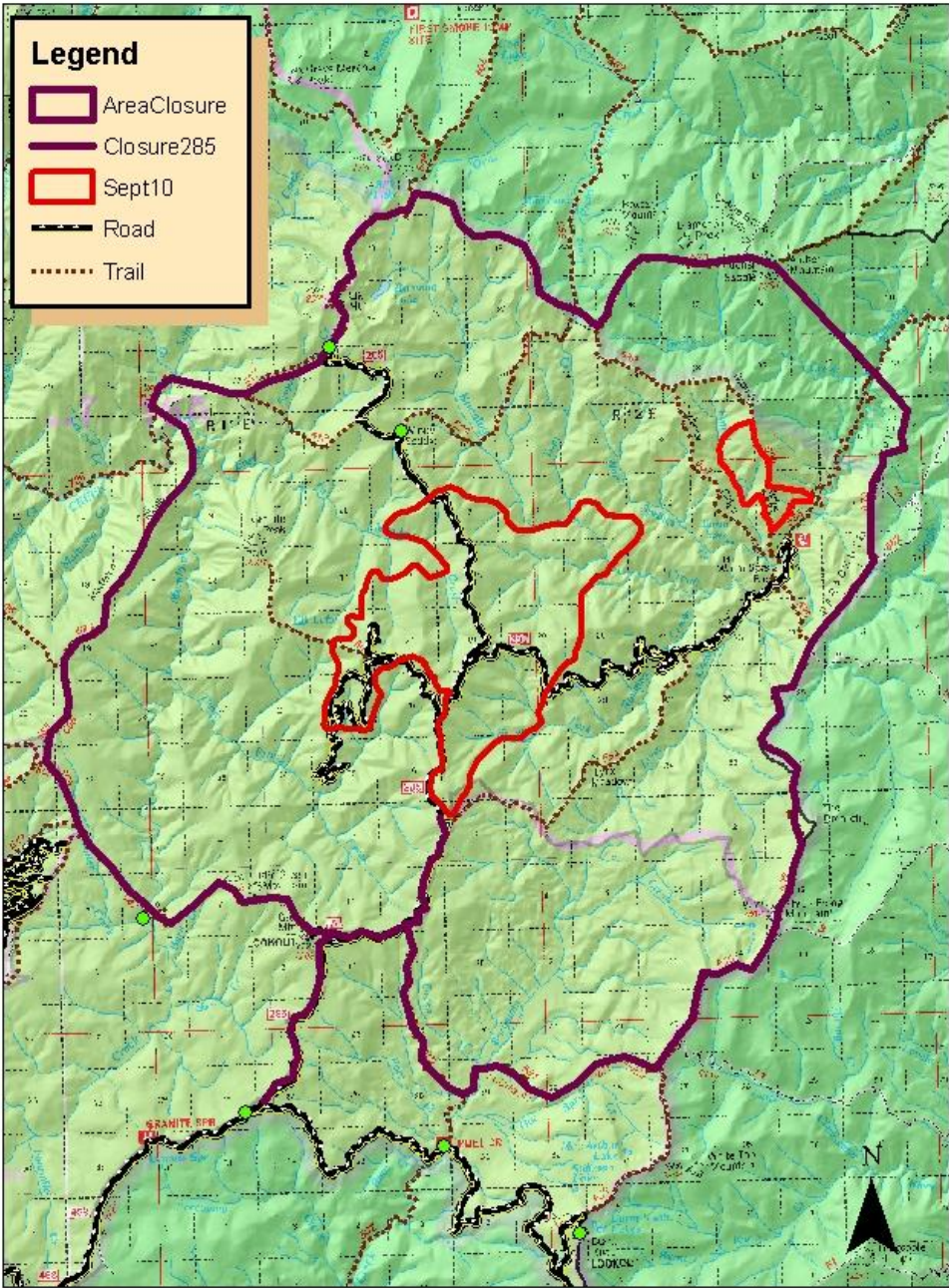
For Additional Information Contact: Red River Ranger District Office, 300 American River Road, Elk City, ID 83525; Telephone (208) 842-2245.

Done at Grangeville, Idaho this 13th day of September, 2011.

/s/ Rick Brazell

RICK BRAZELL
Forest Supervisor
Nez Perce-Clearwater National Forests

East Fork Fire Area Closure



0 0.5 1 2 3 4 Miles

11 Sept 2011