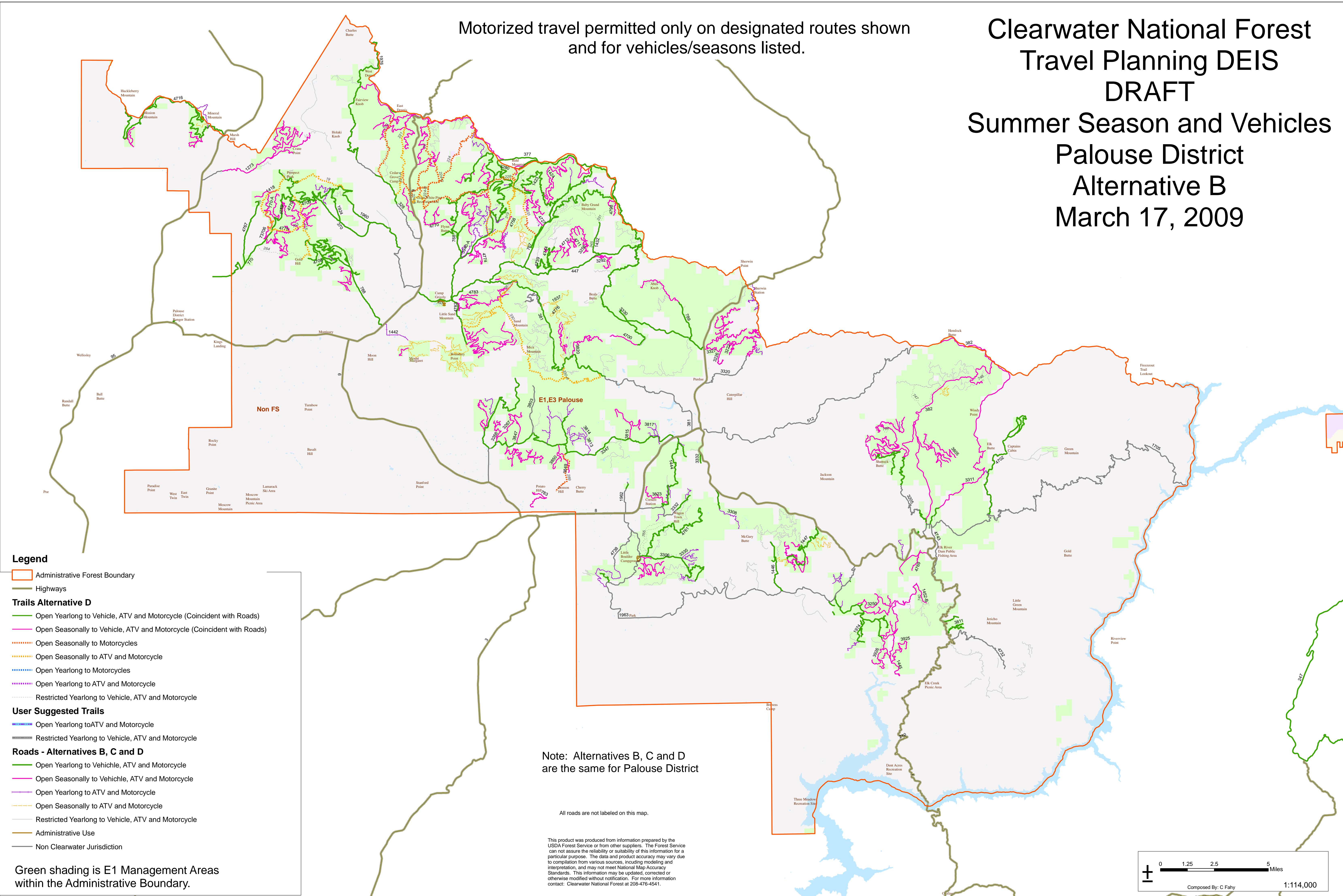


Clearwater National Forest Travel Planning DEIS DRAFT Summer Season and Vehicles Palouse District Alternative B March 17, 2009

Motorized travel permitted only on designated routes shown
and for vehicles/seasons listed.



- Legend**
- Administrative Forest Boundary
 - Highways
 - Trails Alternative D**
 - Open Yearlong to Vehicle, ATV and Motorcycle (Coincident with Roads)
 - Open Seasonally to Vehicle, ATV and Motorcycle (Coincident with Roads)
 - Open Seasonally to Motorcycles
 - Open Seasonally to ATV and Motorcycle
 - Open Yearlong to Motorcycles
 - Open Yearlong to ATV and Motorcycle
 - Restricted Yearlong to Vehicle, ATV and Motorcycle
 - User Suggested Trails**
 - Open Yearlong to ATV and Motorcycle
 - Restricted Yearlong to Vehicle, ATV and Motorcycle
 - Roads - Alternatives B, C and D**
 - Open Yearlong to Vehicle, ATV and Motorcycle
 - Open Seasonally to Vehicle, ATV and Motorcycle
 - Open Yearlong to ATV and Motorcycle
 - Open Seasonally to ATV and Motorcycle
 - Restricted Yearlong to Vehicle, ATV and Motorcycle
 - Administrative Use
 - Non Clearwater Jurisdiction

Green shading is E1 Management Areas
within the Administrative Boundary.

Note: Alternatives B, C and D
are the same for Palouse District

All roads are not labeled on this map.

This product was produced from information prepared by the
USDA Forest Service or from other suppliers. The Forest Service
can not assure the reliability or suitability of this information for a
particular purpose. The data and product accuracy may vary due
to compilation from various sources, including modeling and
interpretation, and may not meet National Map Accuracy
Standards. This information may be updated, corrected or
otherwise modified without notification. For more information
contact: Clearwater National Forest at 208-476-4541.

