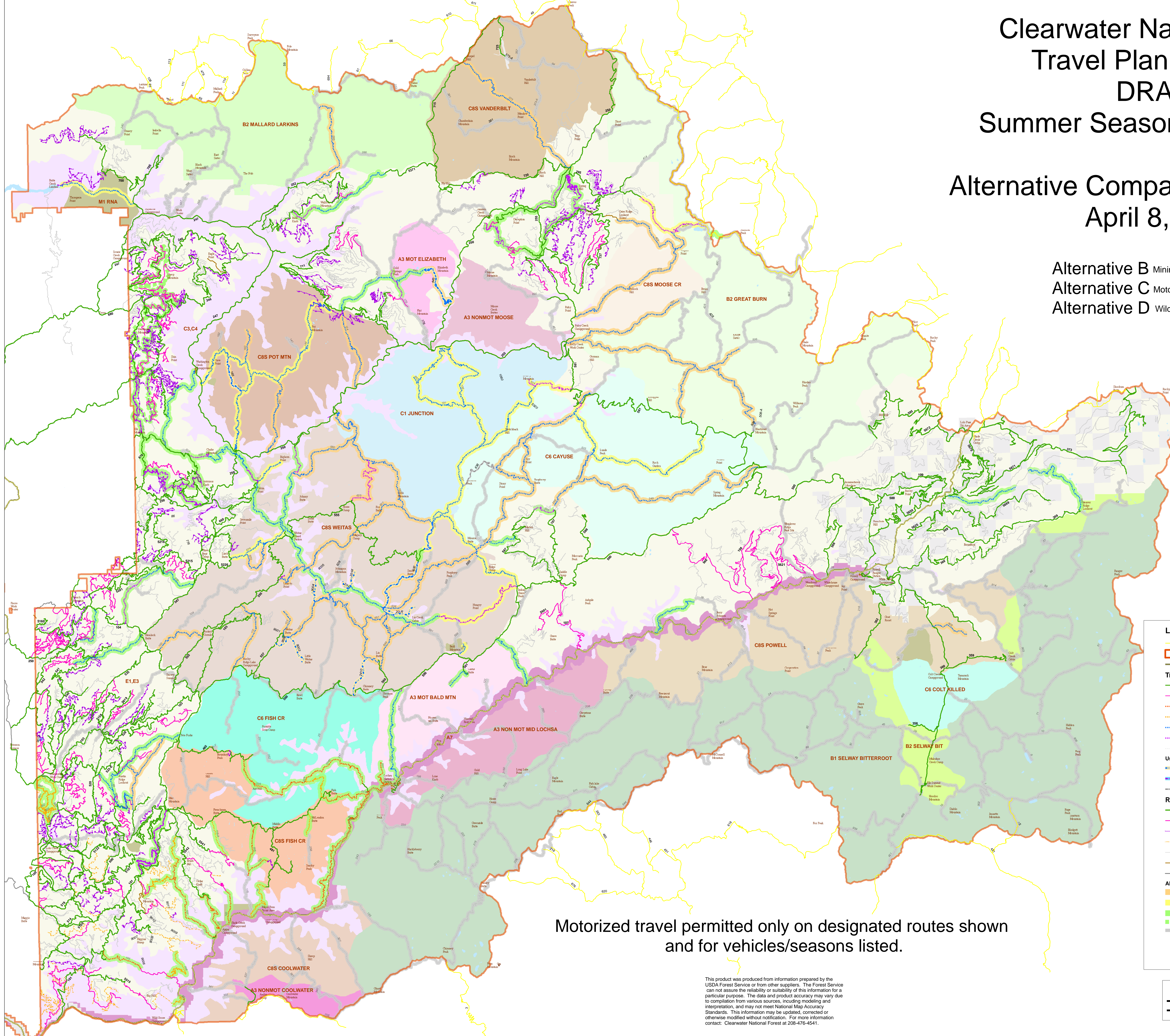


# Clearwater National Forest Travel Planning DEIS DRAFT Summer Season and Vehicles

## Alternative Comparison B, C and D April 8, 2009

Alternative B Minimal OHV Rule Implementation  
Alternative C Motorized Single Track and Loop Trail Opportunities  
Alternative D Wildlife and Recommended Wilderness Emphasis



Motorized travel permitted only on designated routes shown  
and for vehicles/seasons listed.

**Legend**

- Border Routes
- Administrative Forest Boundary
- Highways

**Trails Alternative B**

- Open Yearlong to Vehicle, ATV and Motorcycle (Coincident with Roads)
- Open Seasonally to Vehicle, ATV and Motorcycle (Coincident with Roads)
- Open Seasonally to Motorcycles
- Open Seasonally to ATV and Motorcycle
- Open Yearlong to Motorcycles
- Open Yearlong to ATV and Motorcycle
- Restricted Yearlong to Vehicle, ATV and Motorcycle

**User Suggested Trails**

- Open Yearlong to Motorcycles in Alternative B Only
- Open Yearlong to ATV, Motorcycle (Swede Cr Connector)
- Restricted Yearlong to Vehicle, ATV, Motorcycle

**Roads - Alternatives B, C and D**

- Open Yearlong to Vehicle, ATV and Motorcycle
- Open Seasonally to Vehicle, ATV and Motorcycle
- Open Yearlong to ATV and Motorcycle
- Open Seasonally to ATV and Motorcycle
- Restricted Yearlong to Vehicle, ATV and Motorcycle
- Administrative Use
- Non Clearwater Jurisdiction

**Alternative Comparison**

- Trails Open in Alt B
- Trails Open in Alt C
- Trails Open in Alts D
- Trails Under Construction
- Trails Restricted in Alts B, C and D

Shaded background areas are grouped 1987 Forest Plan Management Areas

This product was produced from information prepared by the USDA Forest Service or from other suppliers. The Forest Service can not assure the reliability or suitability of this information for a particular purpose. The data and product accuracy may vary due to compilation from various sources, including modeling and interpretation, and may not meet National Map Accuracy Standards. This information may be updated, corrected or otherwise modified without notification. For more information contact: Clearwater National Forest at 208-476-4541.

