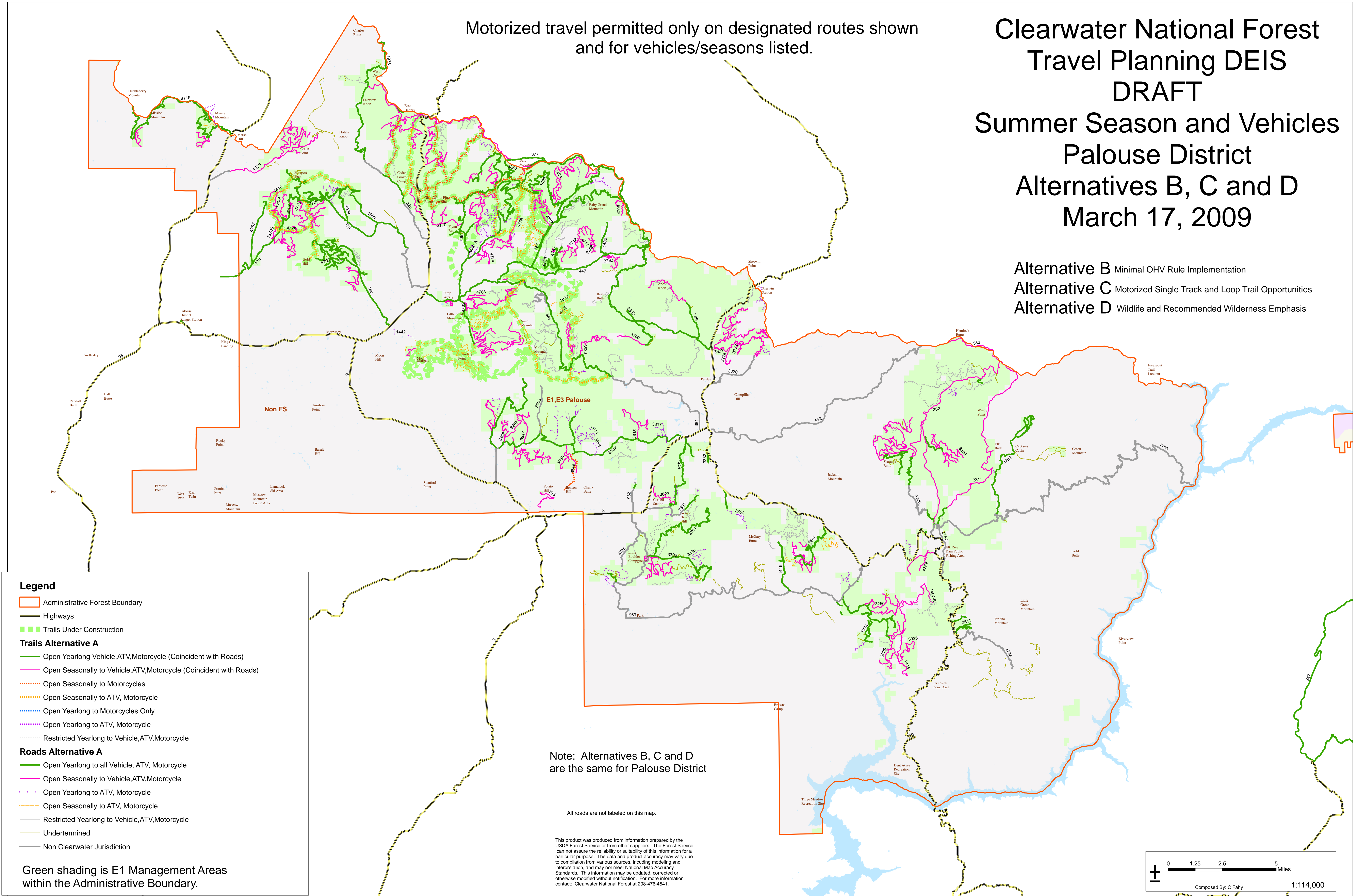


Clearwater National Forest Travel Planning DEIS DRAFT Summer Season and Vehicles Palouse District Alternatives B, C and D March 17, 2009

Alternative B Minimal OHV Rule Implementation
Alternative C Motorized Single Track and Loop Trail Opportunities
Alternative D Wildlife and Recommended Wilderness Emphasis

Motorized travel permitted only on designated routes shown
and for vehicles/seasons listed.



- Legend**
- Administrative Forest Boundary
 - Highways
 - Trails Under Construction
 - Trails Alternative A**
 - Open Yearlong Vehicle,ATV,Motorcycle (Coincident with Roads)
 - Open Seasonally to Vehicle,ATV,Motorcycle (Coincident with Roads)
 - Open Seasonally to Motorcycles
 - Open Seasonally to ATV, Motorcycle
 - Open Yearlong to Motorcycles Only
 - Open Yearlong to ATV, Motorcycle
 - Restricted Yearlong to Vehicle,ATV,Motorcycle
 - Roads Alternative A**
 - Open Yearlong to all Vehicle, ATV, Motorcycle
 - Open Seasonally to Vehicle,ATV,Motorcycle
 - Open Yearlong to ATV, Motorcycle
 - Open Seasonally to ATV, Motorcycle
 - Restricted Yearlong to Vehicle,ATV,Motorcycle
 - Undetermined
 - Non Clearwater Jurisdiction

Green shading is E1 Management Areas within the Administrative Boundary.

Note: Alternatives B, C and D are the same for Palouse District

All roads are not labeled on this map.

This product was produced from information prepared by the USDA Forest Service or from other suppliers. The Forest Service can not assure the reliability or suitability of this information for a particular purpose. The data and product accuracy may vary due to compilation from various sources, including modeling and interpretation, and may not meet National Map Accuracy Standards. This information may be updated, corrected or otherwise modified without notification. For more information contact: Clearwater National Forest at 208-476-4541.

