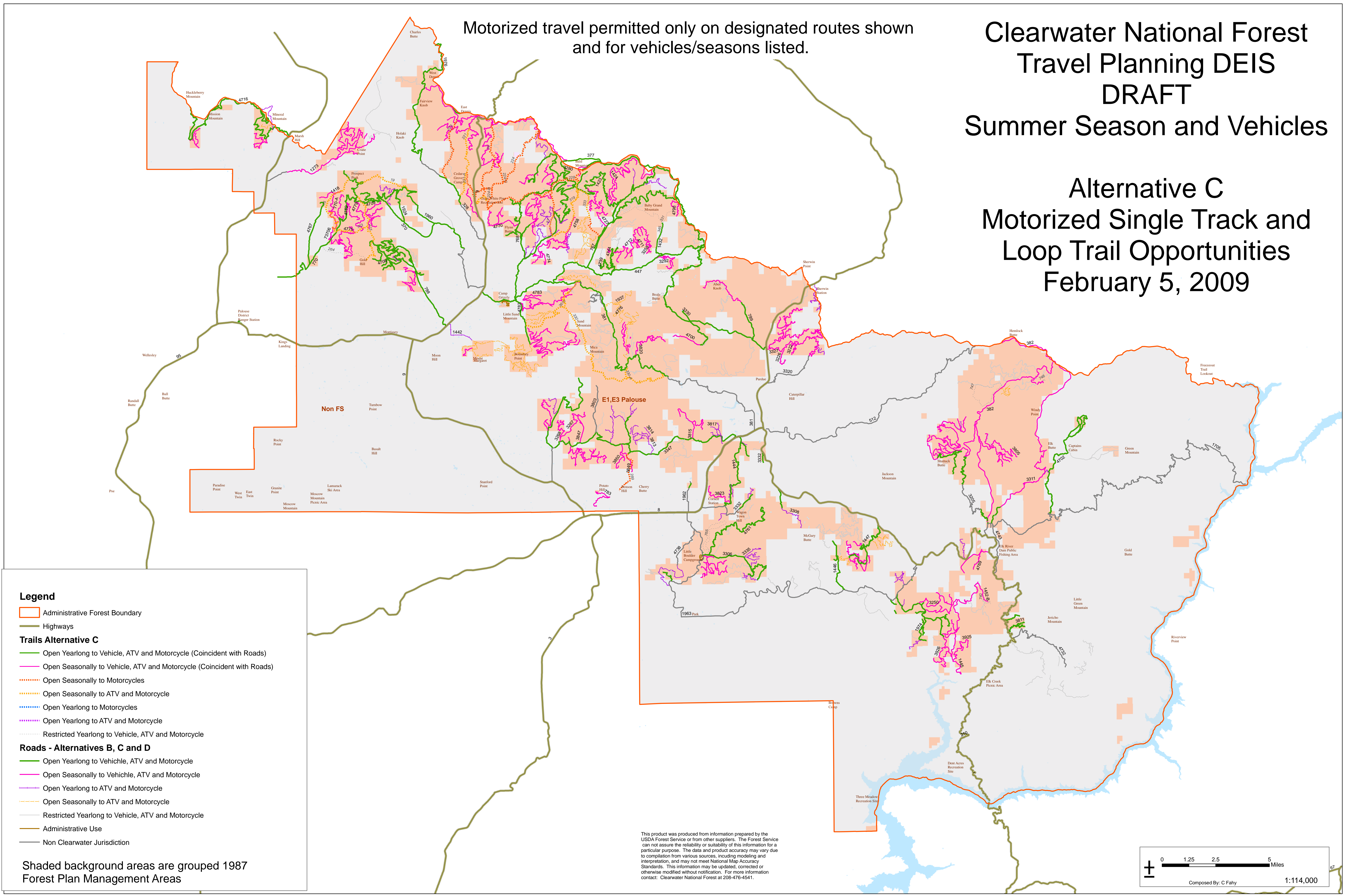


# Clearwater National Forest Travel Planning DEIS DRAFT Summer Season and Vehicles

## Alternative C Motorized Single Track and Loop Trail Opportunities February 5, 2009

Motorized travel permitted only on designated routes shown  
and for vehicles/seasons listed.



- Legend**
- Administrative Forest Boundary
  - Highways
  - Trails Alternative C**
  - Open Yearlong to Vehicle, ATV and Motorcycle (Coincident with Roads)
  - Open Seasonally to Vehicle, ATV and Motorcycle (Coincident with Roads)
  - Open Seasonally to Motorcycles
  - Open Seasonally to ATV and Motorcycle
  - Open Yearlong to Motorcycles
  - Open Yearlong to ATV and Motorcycle
  - Restricted Yearlong to Vehicle, ATV and Motorcycle
  - Roads - Alternatives B, C and D**
  - Open Yearlong to Vehicle, ATV and Motorcycle
  - Open Seasonally to Vehicle, ATV and Motorcycle
  - Open Yearlong to ATV and Motorcycle
  - Open Seasonally to ATV and Motorcycle
  - Restricted Yearlong to Vehicle, ATV and Motorcycle
  - Administrative Use
  - Non Clearwater Jurisdiction

Shaded background areas are grouped 1987  
Forest Plan Management Areas

This product was produced from information prepared by the  
USDA Forest Service or from other suppliers. The Forest Service  
can not assume the reliability or suitability of this information for a  
particular purpose. The data and product accuracy may vary due  
to compilation from various sources, including modeling and  
interpretation, and may not meet National Map Accuracy  
Standards. This information may be updated, corrected or  
otherwise modified without notification. For more information  
contact: Clearwater National Forest at 208-476-4541.

