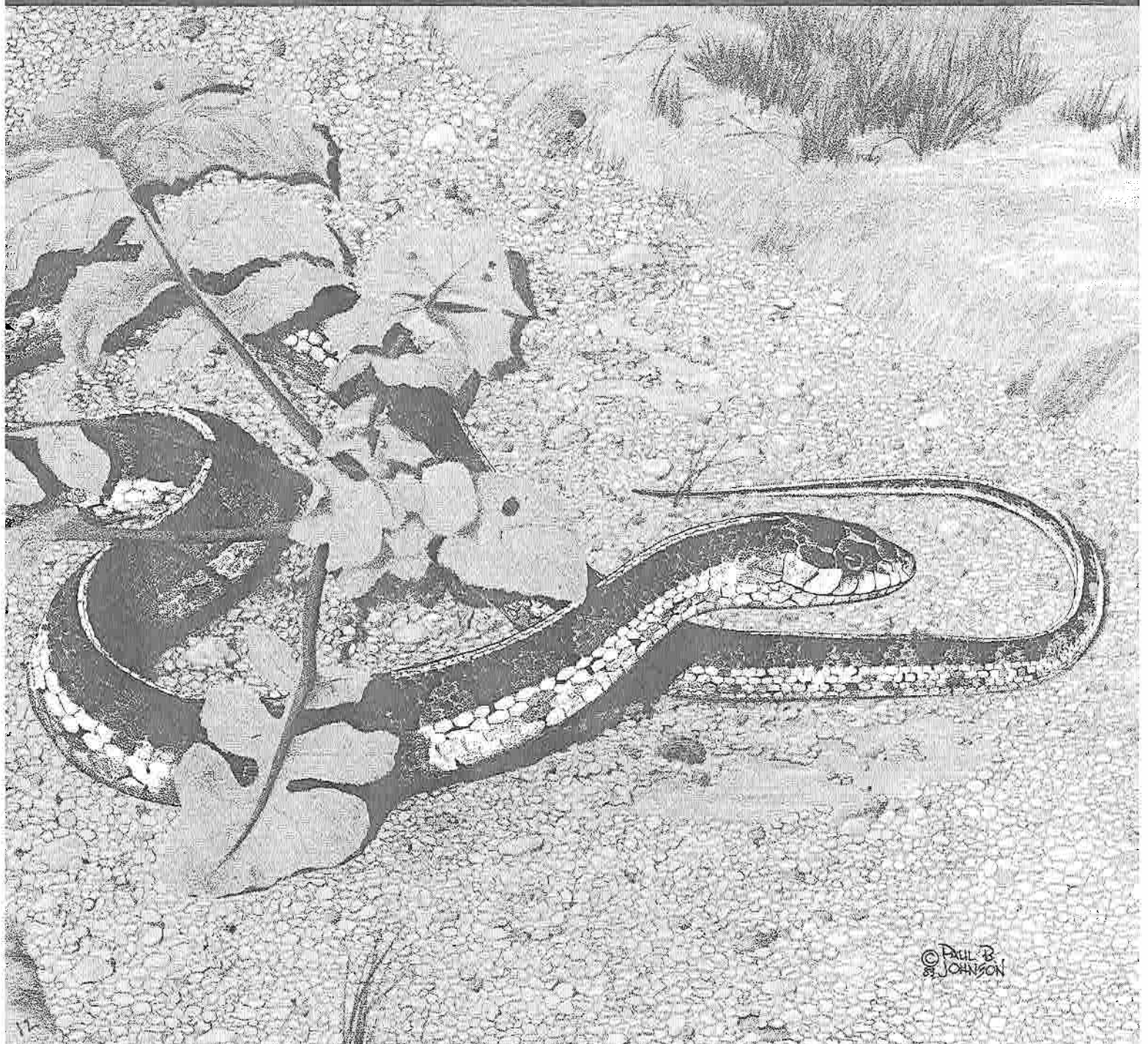


OUTDOOR CALIFORNIA

JANUARY - FEBRUARY 1983



© PAUL B. JOHNSON

A list of amphibians, reptiles, birds and mammals of California

Edited By
William F. Laudenslayer Jr.
and
William E. Grenfell Jr.

This list is a product of the California Wildlife Relationships Program and the California Interagency Wildlife Task Group. Objectives of the effort were to:

- Establish a list of all amphibians, reptiles, birds and mammals which occur in California for the purpose of developing species-habitat relationships models (Marcot 1979, Airola 1980, Osaki 1980, Salwasser et al. 1980, Verner and Boss 1980, Grenfell and Salwasser 1981, Grenfell et al. 1982, Laudenslayer 1982, Loe and Keeney 1983) for use by management agencies, and
- Promote standardization in the use of scientific and English names within California.

Species were selected for inclusion on this list by reviewing the literature for evidence of occurrence of the animal in California. Thus, the list includes transient and accidental, as well as resident species. This checklist include 47 amphibians, 77 reptiles, 542 birds and 214 mammals for a total of 880 species. Thirty-three subspecies are also listed.

Literature reviewed for species distribution in California included one publication for amphibians and reptiles (Stebbins 1972), five publications for birds (Small 1974, Luther et al. 1979, McCaskie et al. 1979, Jones et al. 1981, Laudenslayer et al. 1982), and three publications for mammals (Ingles 1965, Williams 1979, Hall 1981). Once the draft list was established, it was reviewed by experts on each of the four classes. A number of changes were made to the list on

the basis of the reviewers' corrections and comments.

Scientific and English names also were selected from various publications. Scientific names selected were those which appear to be most correct at this time. English names selected included those which were most appropriate for California. For birds, this exercise required examination of the American Ornithologists' Union Checklist (AOU 1957) and supplements (AOU 1973, 1976). The 1957 checklist is in the process of being rewritten, so additional material (Jones et al. 1981, AOU 1982) was considered so that the list would reflect the final version of the new American Ornithologists' Union Checklist. Where changes in common names of birds may be unrecognizable, the former common name, and the new names are shown at the end of the list.

Three publications (Stebbins 1966, 1972, and Collins et al. 1978) were examined for amphibian and reptile names and four publications were consulted for mammals (Jones et al. 1982, Williams 1979, Hall 1981, Honacki et al. 1981).

The arrangement of the species list and the higher taxonomic nomenclature also were dependent on the same sources. The scientific and English names also were reviewed by the same experts as was the draft for distribution within California. Numerous corrections and comments were incorporated into the list.

Although this checklist standardizes scientific and English names for California amphibians, reptiles, birds and mammals, it

must be emphasized that the list is not static; it will change over time as new information is acquired. New species may be added, or listed species may be deleted based on new information. Names also may be changed based on new information which suggests that a species more accurately should be placed in a different genus, two species probably are two subspecies of the same species, or two subspecies probably are one species. As a result of such fluctuations in vertebrate taxonomy, this list will have to be updated periodically.

The status of certain species is indicated by symbols designated in the legend, and is intended to assist in the establishment of management priorities. Endangered species include those threatened with extinction. Threatened species are likely to become endangered in the foreseeable future. Rare species are not necessarily threatened with extinction, but occur in such small numbers that they may become endangered if their environment worsens. Sensitive species are not officially listed, but are under study for classification as threatened, endangered or rare, or have low population densities, or a highly restricted range. Fully protected animals or parts thereof may not be possessed or taken at any time. Harvested species are subject to sport or commercial harvest under regulations of the California Fish and Game Commission. Exotic animals include those which have been introduced by humans and have become established.

Many subspecies of animals occur in California, but only those with special status designations (FT, CE, etc.) are included on this list. If all California subspecies of a species carry some special status (e.g., yellow-billed cuckoo and mountain sheep), then the species name will also show those collective status designations.

William F. Laudenslayer Jr. is a wildlife ecologist with the U.S. Forest Service, Pacific Southwest Region. William E. Grenfell Jr. is a wildlife management supervisor with the wildlife management branch of the California Department of Fish and Game.

ACKNOWLEDGEMENTS

A number of people were involved in the reviews of the various drafts of this list. Members of the California Interagency Wildlife Task Group gave us invaluable support, commented on various portions of the list within areas of their expertise, and gave general direction on the format of the list. The Task Group includes California Department of Forestry, California Department of Fish and Game, the Bureau of Land Management, the U.S. Forest Service, the Soil Conservation Service, the University of California, Pacific Gas and Electric Co., Southern California Edison Company, NASA-Ames Research Center, and the California Energy Commission. We also asked experts on each vertebrate class under consideration to comment on the draft list. Valuable corrections and comments were received from J. Brode, H. Greene, M. Jennings, K. Nicol (amphibians and reptiles), A. Craig, T. Howell, N. Johnson, J. Verner (birds), J. Gustafson, J. Patton, J. Schonewald, D. Patten and D. Miller (mammals). Any errors that remain are the responsibility of the editors.

LITERATURE CITED

- Airola, D. A., ed. 1980. *California Wildlife Habitat Relationships Program: Northeast Interior Zone*. Vols. II, III, IV. USDA Forest Service, Pacific Southwest Region, Lassen Nat'l. Forest, Susanville, Calif.
- American Ornithologists' Union. 1957. "Check-list of North American Birds." Fifth ed. Port City Press, Inc., Baltimore, Md.
- American Ornithologists' Union. 1973. "Thirty-second supplement to the American Ornithologists' Union Check-list of North American Birds." *Auk* 90:411-419.
- American Ornithologists' Union. 1976. "Thirty-third supplement to the American Ornithologists' Union Check-list of North American Birds." *Auk* 93:875-879.
- American Ornithologists' Union. 1982. "Thirty-fourth supplement to the American Ornithologists' Union Check-list of North American Birds." *Auk* (Suppl.) 99 (3):1cc-16cc.
- Collins, J. T., J. E. Huheey, J. L. Knight, and H. M. Smith. 1978. "Standard Common and Current Scientific Names for North American Amphibians and Reptiles." *Soc. Study Amphibians and Reptiles. Herp. Circ.* 7.
- Grenfell, W., and H. Salwasser. 1981. "Wildlife Habitat Relationships Program: Quick Answers to Tough Wildlife Questions." *Outdoor Calif.* 42(6).
- Grenfell, W., H. Salwasser, and W. Laudenslayer. 1982. "The California Wildlife/Fish Habitat Relationships System." *Cal-Neva Wildl. Trans.* In press.
- Hall, E. R. 1981. *The Mammals of North America*. John Wiley and Sons, New York, NY.
- Honacki, J. H., K. E. Kinman, and J. W. Koepl. 1981. *Mammal Species of the World*. Assoc. Syst. Coll. and Allen Press, Lawrence, Kans.
- Ingles, L. G. 1965. *Mammals of the Pacific States*. Stanford Univ. Press, Stanford, Calif.
- Jones, Jr., J. K., D. C. Carter, H. H. Genoways, R. S. Hoffmann, and D. W. Rice. 1982. "Revised Checklist of North American Mammals North of Mexico, 1982." *Occas. Pap. Mus. Texas Tech. Univ.* No. 80.
- Jones, L., K. Garret, and A. Small. 1981. "Checklist of the Birds of California." *West. Birds* 12:S7-72.
- Laudenslayer, Jr., W. F. 1982. *California Wildlife Habitat Relationships Program: Northeast Interior Zone*. Vol. I, *Introduction and Species-Habitat Matrix*. USDA Forest Service, Pacific Southwest Region, San Francisco, Calif.
- Laudenslayer, Jr., W. F., S. W. Cardiff, and A. S. England. 1982. "Checklist of Birds Known to Occur in the California Desert." In J. Latting, ed., *The California Desert: An Introduction to Natural Resources and Man's Impacts*. Calif. Native Plant Soc. Spec. Publ. No. 5: In press.
- Loe, S. A., and T. W. Keeney (ed.). 1983. *California Wildlife Habitat Relationships Program: Southern Zone*. USDA Forest Service, Pacific Southwest Region, San Bernardino Nat'l Forest and Pacific Southwest Forest and Range Exp. Sta. Gen. Tech. Rep. PSW. In press.
- Luther, J. S., G. McCaskie, and J. Dunn. 1979. "Third Report of the California Bird Records Committee." *West. Birds* 10:169-187.
- Marcot, B. G., ed. 1979. *California Wildlife Habitat Relationships Program: North Coast/Cascades Zone*. Vol. I-IV. USDA Forest Service, Pacific Southwest Region, Six Rivers Nat'l. Forest, Eureka, Calif.
- McCaskie, G., P. DeBenedictis, R. Erickson, and J. Morlan. 1979. "Birds of Northern California: an Annotated Field List." Golden Gate Audubon Soc., Berkeley, Calif.
- Osaki, S. K. 1980. *Wildlife Habitat Relationships: Lake Tahoe Basin Management Unit*. USDA Forest Service, Pacific Southwest Region, Lake Tahoe Basin Manage. Unit, South Lake Tahoe, Calif.
- Salwasser, H., J. C. Capp, H. Black, Jr., and J. F. Hurley. 1980. "The California Wildlife Habitat Relationships Program: an Overview." In R. M. DeGraff, tech. coord., *Workshop Proceedings—Management of Western Forests and Grasslands for Non-game Birds*. USDA Forest Service, Gen. Tech. Rep. INT-86.
- Small, A. 1974. *The Birds of California*. Winchester Press, New York, NY.
- Stebbins, R. C. 1966. *A Field Guide to Western Reptiles and Amphibians*. Houghton Mifflin Co., Boston, Mass.
- Stebbins, R. C. 1972. *Amphibians and Reptiles of California*. Univ. Calif. Press, Berkeley, Calif.
- Verner, J., and A. S. Boss, tech. coords. 1980. *California Wildlife and Their Habitats: Western Sierra Nevada*. USDA Forest Service, Gen. Tech. Rep. PSW-37.
- Williams, D. F. 1979. "Checklist of California Mammals." *Ann. Carnegie Mus.* 48:425-433.

Class: AMPHIBIA

ORDER: CAUDATA (Salamanders)

- FAMILY: AMBYSTOMATIDAE (Mole Salamanders and Relatives)**
 Tiger Salamander (*Ambystoma tigrinum*)
 Northwestern Salamander (*Ambystoma gracile*)
 Long-toed Salamander (*Ambystoma macrodactylum*)
 Santa Cruz Long-toed Salamander (*A. m. croceum*) FE CE CP
 Pacific Giant Salamander (*Dicamptodon ensatus*)
 Olympic Salamander (*Rhyacotriton olympicus*)
- FAMILY: SALAMANDRIDAE (Newts)**
 Rough-skinned Newt (*Taricha granulosa*)
 California Newt (*Taricha torosa*)
 Red-bellied Newt (*Taricha rivularis*)
- FAMILY: PLETHODONTIDAE (Lungless Salamanders)**
 Dunn's Salamander (*Plethodon dunni*)
 Del Norte Salamander (*Plethodon elongatus*)
 Siskiyou Mountain Salamander (*Plethodon stormi*) CR FS
 Ensatina (*Ensatina eschscholtzi*) FE CE
 Desert Slender Salamander (*Batrachoseps aridus*)
 California Slender Salamander (*Batrachoseps attenuatus*)
 Black-bellied Slender Salamander (*Batrachoseps nigriventris*)
 Pacific Slender Salamander (*Batrachoseps pacificus*)
 Kern Canyon Slender Salamander (*Batrachoseps simatus*) CR FS
 Tehachapi Slender Salamander (*Batrachoseps stebbinsi*) CR FS
 Inyo Mountains Salamander (*Batrachoseps campi*) BS
 Black Salamander (*Aneides flavipunctatus*)
 Clouded Salamander (*Aneides ferreus*)
 Arboreal Salamander (*Aneides lugubris*)
 Mount Lyell Salamander (*Hydromantes platycephalus*)
 Shasta Salamander (*Hydromantes shastae*) CR FS
 Limestone Salamander (*Hydromantes brunus*) CR FS CP

ORDER: SALIENTIA (Frogs and Toads)

- FAMILY: ASCAPHIDAE (Tailed Frogs)**
 Tailed Frog (*Ascaphus truei*)
- FAMILY: PELOBATIDAE (Spadefoot Toads)**
 Couch's Spadefoot (*Scaphiopus couchi*)
 Western Spadefoot (*Scaphiopus hammondi*)
 Great Basin Spadefoot (*Scaphiopus intermontanus*)
- FAMILY: BUFONIDAE (True Toads)**
 Colorado River Toad (*Bufo alvarius*)
 Black Toad (*Bufo exsul*) CR FS CP
 Western Toad (*Bufo boreas*)
 Yosemite Toad (*Bufo canorus*)
 Woodhouse's Toad (*Bufo woodhousei*)
 Southwestern Toad (*Bufo microscaphus*)
 Red-spotted Toad (*Bufo punctatus*)
 Great Plains Toad (*Bufo cognatus*)
- FAMILY: HYLIDAE (Treefrogs and Relatives)**
 California Treefrog (*Hyla cadaverina*)
 Pacific Treefrog (*Hyla regilla*)
- FAMILY: RANIDAE (True Frogs)**
 Red-legged Frog (*Rana aurora*)
 Spotted Frog (*Rana pretiosa*)
 Cascades Frog (*Rana cascadae*)
 Foothill Yellow-legged Frog (*Rana boylei*)
 Mountain Yellow-legged Frog (*Rana muscosa*)
 Northern Leopard Frog (*Rana pipiens*)
 "San Sebastian" Leopard Frog (*Rana cf. pipiens*)
 Bullfrog (*Rana catesbeiana*) EX HA
FAMILY: PIPIDAE (Pipid Frogs)
 African Clawed Frog (*Xenopus laevis*) EX

Class: REPTILIA

ORDER: TESTUDINES (Turtles)

- FAMILY: CHELYDRIDAE (Snapping Turtles)**
 Common Snapping Turtle (*Chelydra serpentina*) EX
- FAMILY: KINOSTERNIDAE (Musk and Mud Turtles)**
 Sonora Mud Turtle (*Kinosternon sonoriense*)
- FAMILY: EMYDIDAE (Pond and Marsh Turtles)**
 Pond Slider (*Chrysemys scripta*) EX
 Western Pond Turtle (*Clemmys marmorata*)
- FAMILY: TESTUDINIDAE (Tortoises)**
 Desert Tortoise (*Gopherus agassizi*) BS
- FAMILY: TRIONYCHIDAE (Softshell Turtles)**
 Spiny Softshell (*Trionyx spiniferus*) EX

ORDER: SQUAMATA (Lizards and Snakes)

- FAMILY: GEKKONIDAE (Geckos)**
 Switak's Barefoot Gecko (*Anarbylus switaki*) CR FS
 Banded Gecko (*Coleonyx variegatus*)
 Leaf-toed Gecko (*Phyllodactylus xanti*)
- FAMILY: IGUANIDAE (Iguanids)**
 Desert Iguana (*Dipsosaurus dorsalis*)
 Chuckwalla (*Sauromalus obesus*)
 Zebra-tailed Lizard (*Callisaurus draconoides*)
 Colorado Desert Fringe-toed Lizard (*Uma notata*)
 Coachella Valley Fringe-toed Lizard (*Uma inornata*) FT CE
 Mojave Fringe-toed Lizard (*Uma scoparia*)
 Mojave Black-collard Lizard (*Crotaphytus bicinctores*)
 Black-collard Lizard (*Crotaphytus insularis*)
 Long-nosed Leopard Lizard (*Gambelia wislizenii*)
 Blunt-nosed Leopard Lizard (*Gambelia silus*) FE CE CP
 Desert Spiny Lizard (*Sceloporus magister*)
 Granite Spiny Lizard (*Sceloporus orcutti*)
 Western Fence Lizard (*Sceloporus occidentalis*)
 Sagebrush Lizard (*Sceloporus graciosus*)
 Side-blotched Lizard (*Uta stansburiana*)
 Long-tailed Brush Lizard (*Urosaurus graciosus*)
 Tree Lizard (*Urosaurus ornatus*)
 Small-scaled Lizard (*Urosaurus microscutatus*)
 Banded Rock Lizard (*Petrosaurus mearnsi*)
 Coast Horned Lizard (*Phrynosoma coronatum*)
 Desert Horned Lizard (*Phrynosoma platyrhinos*)
 Short-horned Lizard (*Phrynosoma douglassi*)
 Flat-tailed Horned Lizard (*Phrynosoma m'calli*)
- FAMILY: XANTUSIIDAE (Night Lizards)**
 Granite Night Lizard (*Xantusia henshawii*)
 Desert Night Lizard (*Xantusia vigilis*)
 Island Night Lizard (*Klauberina riversiana*) FT
- FAMILY: SCINCIDAE (Skinks)**
 Western Skink (*Eumeces skiltonianus*)
 Gilbert's Skink (*Eumeces gilberti*)
- FAMILY: TEIIDAE (Whiptails and Relatives)**
 Orange-throated Whiptail (*Cnemidophorus hyperythrus*)
 Western Whiptail (*Cnemidophorus tigris*)
- FAMILY: ANGUIDAE (Alligator Lizards and Relatives)**
 Southern Alligator Lizard (*Gerrhonotus multicarinatus*)
 Panamint Alligator Lizard (*Gerrhonotus panamintinus*)
 Northern Alligator Lizard (*Gerrhonotus coeruleus*)
- FAMILY: ANNIELLIDAE (California Legless Lizards)**
 California Legless Lizard (*Anniella pulchra*)
- FAMILY: HELODERMATIDAE (Venomous Lizards)**
 Gila Monster (*Heloderma suspectum*)
- FAMILY: LEPTOTYPHLOPIDAE (Slender Blind Snakes)**
 Western Blind Snake (*Leptotyphlops humilis*)
- FAMILY: BOIDAE (Boas)**
 Rubber Boa (*Charina bottae*)
 Southern Rubber Boa (*C. b. umbratica*) CR FS
 Rosy Boa (*Lichanura trivirgata*)

STATUS LEGEND

- CE — Designated an endangered species by the California Fish and Game Commission
- CR — Designated a rare species by the California Fish and Game Commission
- CP — Fully protected species in California
- FE — Designated an endangered species by the federal government
- FT — Designated a threatened species by the federal government
- HA — Harvested species
- EX — Non-native species
- FS — Forest Service sensitive (see introduction)
- BS — Bureau of Land Management sensitive (see introduction)
- * — Irregular visitors to California
- # — Principally pelagic (found in open sea)

FAMILY: COLUBRIDAE (Colubrids)

- Ringneck Snake (*Diadophis punctatus*)
- Sharp-tailed Snake (*Contia tenuis*)
- Spotted Leaf-nosed Snake (*Phyllorhynchus decurtatus*)
- Racer (*Coluber constrictor*)
- Coachwhip (*Masticophis flagellum*)
- Striped Racer (*Masticophis lateralis*)
- Alameda Striped Racer (*M. l. euryxanthus*)
- Striped Whipsnake (*Masticophis taeniatus*)
- Western Patch-nosed Snake (*Salvadora hexalepis*)
- Glossy Snake (*Arizona elegans*)
- Gopher Snake (*Pituophis melanoleucus*)
- Common Kingsnake (*Lampropeltis getulus*)
- California Mountain Kingsnake (*Lampropeltis zonata*)
- Long-nosed Snake (*Rhinocheilus lecontei*)
- Common Garter Snake (*Thamnophis sirtalis*)
- San Francisco Garter Snake (*T. s. tetraetaenia*)
- Western Terrestrial Garter Snake (*Thamnophis elegans*)
- Western Aquatic Garter Snake (*Thamnophis couchi*)
- Giant Garter Snake (*T. c. gigas*)
- Northwestern Garter Snake (*Thamnophis ordinoides*)
- Checkered Garter Snake (*Thamnophis marcianus*)
- Western Ground Snake (*Sonora semiannulata*)
- Western Shovel-nosed Snake (*Chionactis occipitalis*)
- Western Black-headed Snake (*Tantilla planiceps*)
- Southwestern Black-headed Snake (*Tantilla hobartsmithi*)
- Lyre Snake (*Trimorphodon biscutatus*)
- Night Snake (*Hypsiglena torquata*)
- FAMILY: VIPERIDAE** (Vipers)
- Western Diamondback Rattlesnake (*Crotalus atrox*)
- Red Diamond Rattlesnake (*Crotalus ruber*)
- Speckled Rattlesnake (*Crotalus mitchelli*)
- Sidewinder (*Crotalus cerastes*)
- Western Rattlesnake (*Crotalus viridis*)
- Mojave Rattlesnake (*Crotalus scutulatus*)

CR
FE CE CP
CR

Class: AVES

ORDER: GAVIIFORMES (Loons)

FAMILY: GAVIIDAE (Loons)

- Red-throated Loon (*Gavia stellata*)
- Arctic Loon (*Gavia arctica*)
- Common Loon (*Gavia immer*)
- Yellow-billed Loon (*Gavia adamsii*)

*

ORDER: PODICIPEDIFORMES (Grebes)

FAMILY: PODICIPEDIDAE (Grebes)

- Least Grebe (*Tachybaptus dominicus*)
- Pied-billed Grebe (*Podilymbus podiceps*)
- Horned Grebe (*Podiceps auritus*)
- Red-necked Grebe (*Podiceps grisegena*)
- Eared Grebe (*Podiceps nigricollis*)
- Western Grebe (*Aechmophorus occidentalis*)

*

STATUS LEGEND

- CE — Designated an endangered species by the California Fish and Game Commission
- CR — Designated a rare species by the California Fish and Game Commission
- CP — Fully protected species in California
- FE — Designated an endangered species by the federal government
- FT — Designated a threatened species by the federal government
- HA — Harvested species
- EX — Non-native species
- FS — Forest Service sensitive (see Introduction)
- BS — Bureau of Land Management sensitive (see Introduction)
- * — Irregular visitors to California
- # — Principally pelagic (found in open sea)

ORDER: PROCELLARIIFORMES (Albatrosses, Shearwaters, Petrels, and Relatives)

FAMILY: DIOMEDEIDAE (Albatrosses)

- Wandering Albatross (*Diomedea exulans*)
- Short-tailed Albatross (*Diomedea albatrus*)
- Black-footed Albatross (*Diomedea nigripes*)
- Laysan Albatross (*Diomedea immutabilis*)

FAMILY: PROCELLARIIDAE (Shearwaters, Fulmars)

- Northern Fulmar (*Fulmarus glacialis*)
- Mottled Petrel (*Pterodroma inexpectata*)
- Cook's Petrel (*Pterodroma cookii*)
- Stejneger's Petrel (*Pterodroma longirostris*)
- Streaked Shearwater (*Calonectris leucomelas*)
- Pink-footed Shearwater (*Puffinus creatopus*)
- Flesh-footed Shearwater (*Puffinus carneipes*)
- Greater Shearwater (*Puffinus gravis*)
- Buller's Shearwater (*Puffinus bulleri*)
- Sooty Shearwater (*Puffinus griseus*)
- Short-tailed Shearwater (*Puffinus tenuirostris*)
- Black-vented Shearwater (*Puffinus opisthomelas*)

FAMILY: HYDROBATIDAE (Storm-Petrels)

- Wilson's Storm-Petrel (*Oceanites oceanicus*)
- Fork-tailed Storm-Petrel (*Oceanodroma furcata*)
- Leach's Storm Petrel (*Oceanodroma leucorhoa*)
- Ashy Storm-Petrel (*Oceanodroma homochroa*)
- Band-rumped Storm-Petrel (*Oceanodroma castro*)
- Wedge-rumped Storm-Petrel (*Oceanodroma tethys*)
- Black Storm-Petrel (*Oceanodroma melania*)
- Least Storm-Petrel (*Oceanodroma microsoma*)

ORDER: PELECANIFORMES (Tropicbirds, Pelicans, and Relatives)

FAMILY: PHAETHONTIDAE (Tropicbirds)

- White-tailed Tropicbird (*Phaethon lepturus*)
- Red-billed Tropicbird (*Phaethon aethereus*)
- Red-tailed Tropicbird (*Phaethon rubricauda*)

FAMILY: SULIDAE (Boobies and Gannets)

- Masked Booby (*Sula dactylatra*)
- Blue-footed Booby (*Sula nebouxii*)
- Brown Booby (*Sula leucogaster*)
- Red-footed Booby (*Sula sula*)

FAMILY: PELECANIDAE (Pelicans)

- American White Pelican (*Pelecanus erythrorhynchos*)
- Brown Pelican (*Pelecanus occidentalis*)
- California Brown Pelican (*P. o. californicus*)

FE CE CP
FE CE CP

FAMILY: PHALACROCORACIDAE (Cormorants)

- Double-crested Cormorant (*Phalacrocorax auritus*)
- Olivaceous Cormorant (*Phalacrocorax olivaceus*)
- Brandt's Cormorant (*Phalacrocorax penicillatus*)
- Pelagic Cormorant (*Phalacrocorax pelagicus*)

FAMILY: FREGATIDAE (Frigatebirds)

- Magnificent Frigatebird (*Fregata magnificens*)

ORDER: CICONIIFORMES (Hérons, Storks, Ibises, and Relatives)

FAMILY: ARDEIDAE (Hérons and Bitterns)

- American Bittern (*Botaurus lentiginosus*)
- Least Bittern (*Ixobrychus exilis*)
- Great Blue Heron (*Ardea herodias*)
- Great Egret (*Casmerodius albus*)
- Snowy Egret (*Egretta thula*)
- Little Blue Heron (*Egretta caerulea*)
- Tricolored Heron (*Egretta tricolor*)
- Reddish Egret (*Egretta rufescens*)
- Cattle Egret (*Bubulcus ibis*)
- Green-backed Heron (*Butorides striatus*)
- Black-crowned Night Heron (*Nycticorax nycticorax*)
- Yellow-crowned Night Heron (*Nycticorax violaceus*)

FAMILY: THRESKIORNITHIDAE (Ibises and Spoonbills)

- White Ibis (*Eudocimus albus*)
- White-faced Ibis (*Plegadis chihi*)
- Roseate Spoonbill (*Ajaia ajaja*)

FAMILY: CICONIIDAE (Storks and Wood Ibises)

- Wood Stork (*Mycteria americana*)

ORDER: ANSERIFORMES (Screamers, Ducks, and Relatives)

FAMILY: ANATIDAE (Swans, Geese, and Ducks)

- Fulvous Whistling-Duck (*Dendrocygna bicolor*)
- Black-bellied Whistling-Duck (*Dendrocygna autumnalis*)
- Tundra Swan (*Cygnus columbianus*)
- Trumpeter Swan (*Cygnus buccinator*)
- Greater White-fronted Goose (*Anser albifrons*)
- Snow Goose (*Chen caerulescens*)
- Ross' Goose (*Chen rossii*)

HA
*
* CP
HA
HA
HA

Emperor Goose (*Chen canagica*) *
 Brant (*Branta bernicla*) HA
 Canada Goose (*Branta canadensis*) HA
 Aleutian Canada Goose (*B. c. leucopareia*) FE
 Wood Duck (*Aix sponsa*) HA
 Green-winged Teal (*Anas crecca*) HA
 Baikal Teal (*Anas formosa*) *
 Mallard (*Anas platyrhynchos*) HA
 Northern Pintail (*Anas acuta*) HA
 Garganey (*Anas querquedula*) *
 Blue-winged Teal (*Anas discors*) HA
 Cinnamon Teal (*Anas cyanoptera*) HA
 Northern Shoveler (*Anas clypeata*) HA
 Gadwall (*Anas strepera*) HA
 Eurasian Wigeon (*Anas penelope*) *
 American Wigeon (*Anas americana*) HA
 Canvasback (*Aythya valisineria*) HA
 Redhead (*Aythya americana*) HA
 Ring-necked Duck (*Aythya collaris*) HA
 Tufted Duck (*Aythya fuligula*) *
 Greater Scaup (*Aythya marila*) HA
 Lesser Scaup (*Aythya affinis*) HA
 King Eider (*Somateria spectabilis*) *
 Harlequin Duck (*Histrionicus histrionicus*) HA
 Oldsquaw (*Clangula hyemalis*) HA
 Black Scoter (*Melanitta nigra*) HA
 Surf Scoter (*Melanitta perspicillata*) HA
 White-winged Scoter (*Melanitta fusca*) HA
 Common Goldeneye (*Bucephala clangula*) HA
 Barrow's Goldeneye (*Bucephala islandica*) HA
 Bufflehead (*Bucephala albeola*) HA
 Hooded Merganser (*Lophodytes cucullatus*) HA
 Common Merganser (*Mergus merganser*) HA
 Red-breasted Merganser (*Mergus serrator*) HA
 Ruddy Duck (*Oxyura jamaicensis*) HA

ORDER: FALCONIFORMES (Vultures, Hawks, and Falcons)

FAMILY: CATHARTIDAE (American Vultures)

Turkey Vulture (*Cathartes aura*)
 California Condor (*Gymnogyps californianus*) FE CE CP

FAMILY: ACCIPITRIDAE (Hawks, Old World Vultures, and Harriers)

Osprey (*Pandion haliaetus*) FS
 Black-shouldered Kite (*Elanus caeruleus*) CP
 Mississippi Kite (*Ictinia mississippiensis*) *
 Bald Eagle (*Haliaeetus leucocephalus*) FE CE CP
 Northern Harrier (*Circus cyaneus*)
 Sharp-shinned Hawk (*Accipiter striatus*)
 Cooper's Hawk (*Accipiter cooperii*)
 Northern Goshawk (*Accipiter gentilis*) FS
 Harris' Hawk (*Parabuteo unicinctus*) *
 Red-shouldered Hawk (*Buteo lineatus*)
 Broad-winged Hawk (*Buteo platypterus*) *
 Swainson's Hawk (*Buteo swainsoni*)
 Zone-tailed Hawk (*Buteo albonotatus*) *
 Red-tailed Hawk (*Buteo jamaicensis*)
 Ferruginous Hawk (*Buteo regalis*)
 Rough-legged Hawk (*Buteo lagopus*)
 Golden Eagle (*Aquila chrysaetos*) FS CP

FAMILY: FALCONIDAE (Caracaras and Falcons)

American Kestrel (*Falco sparverius*)
 Merlin (*Falco columbarius*)
 Peregrine Falcon (*Falco peregrinus*) FE CE CP
 American Peregrine Falcon (*F. p. anatum*) FE CE CP
 Gyrfalcon (*Falco rusticolus*) *
 Prairie Falcon (*Falco mexicanus*) FS

ORDER: GALLIFORMES (Megapodes, Curassows, Pheasants, and Relatives)

FAMILY: PHASIANIDAE (Quails, Pheasants, and Relatives)

Chukar (*Alectoris chukar*) HA EX
 Ring-necked Pheasant (*Phasianus colchicus*) HA EX
 Blue Grouse (*Dendragapus obscurus*) HA
 Mt. Pinos Blue Grouse (*D. o. howardi*) FS
 White-tailed Ptarmigan (*Lagopus leucurus*) EX
 Ruffed Grouse (*Bonasa umbellus*) HA
 Sage Grouse (*Centrocercus urophasianus*) *
 Wild Turkey (*Meleagris gallopavo*) HA EX
 Gambel's Quail (*Callipepla gambelii*) HA
 California Quail (*Callipepla californica*) HA
 Mountain Quail (*Oreortyx pictus*) HA

ORDER: GRUIFORMES (Cranes, Rails, and Relatives)

FAMILY: RALLIDAE (Rails, Gallinules, and Coots)

Yellow Rail (*Coturnicops noveboracensis*) *
 Black Rail (*Laterallus jamaicensis*) CR CP
 California Black Rail (*L. j. coturniculus*) CR CP
 Clapper Rail (*Rallus longirostris*) FE CE CP
 California Clapper Rail (*R. l. obsoletus*) FE CE CP
 Light-footed Clapper Rail (*R. l. levipes*) FE CE CP
 Yuma Clapper Rail (*R. l. yumanensis*) FE CR CP
 Virginia Rail (*Rallus limicola*)
 Sora (*Porzana carolina*)
 Purple Gallinule (*Porphyrula martinica*) *
 Common Moorhen (*Gallinula chloropus*) HA
 American Coot (*Fulica americana*) HA

FAMILY: GRUIDAE (Cranes)

Sandhill Crane (*Grus canadensis*)
 Greater Sandhill Crane (*G. c. tabida*) CP

ORDER: CHARADRIIFORMES (Shorebirds, Gulls, and Relatives)

FAMILY: CHARADRIIDAE (Plovers and Relatives)

Black-bellied Plover (*Pluvialis squatarola*)
 Lesser Golden Plover (*Pluvialis dominica*) *
 Mongolian Plover (*Charadrius mongolus*) *
 Snowy Plover (*Charadrius alexandrinus*)
 Wilson's Plover (*Charadrius wilsonia*) *
 Semipalmated Plover (*Charadrius semipalmatus*)
 Piping Plover (*Charadrius melodus*) *
 Killdeer (*Charadrius vociferus*)
 Mountain Plover (*Charadrius montanus*)
 Eurasian Dotterel (*Charadrius morinellus*) *

FAMILY: HAEMATOPODIDAE (Oystercatchers)

American Oystercatcher (*Haematopus palliatus*) *
 American Black Oystercatcher (*Haematopus bachmani*)

FAMILY: RECURVIROSTRIDAE (Avocets and Stilts)

Black-necked Stilt (*Himantopus mexicanus*)
 American Avocet (*Recurvirostra americana*)

FAMILY: SCOLOPACIDAE (Sandpipers and Relatives)

Greater Yellowlegs (*Tringa melanoleuca*)
 Lesser Yellowlegs (*Tringa flavipes*)
 Solitary Sandpiper (*Tringa solitaria*)
 Willet (*Catoptrophorus semipalmatus*)
 Wandering Tattler (*Heteroscelus incanus*)
 Spotted Sandpiper (*Actitis macularia*)
 Upland Sandpiper (*Bartramia longicauda*) *
 Whimbrel (*Numenius phaeopus*)
 Long-billed Curlew (*Numenius americanus*)
 Hudsonian Godwit (*Limosa haemastica*) *
 Bar-tailed Godwit (*Limosa lapponica*) *
 Marbled Godwit (*Limosa fedoa*)
 Ruddy Turnstone (*Arenaria interpres*)
 Black Turnstone (*Arenaria melanocephala*)
 Surf-bird (*Aphriza virgata*)
 Red Knot (*Calidris canutus*)
 Sanderling (*Calidris alba*)
 Semipalmated Sandpiper (*Calidris pusilla*) *
 Western Sandpiper (*Calidris mauri*)
 Rufous-necked Stint (*Calidris ruficollis*) *
 Least Sandpiper (*Calidris minutilla*) *
 White-rumped Sandpiper (*Calidris fuscicollis*) *
 Baird's Sandpiper (*Calidris bairdii*)
 Pectoral Sandpiper (*Calidris melanotos*) *
 Sharp-tailed Sandpiper (*Calidris acuminata*) *
 Rock Sandpiper (*Calidris ptilocnemis*) *
 Dunlin (*Calidris alpina*) *
 Curlew Sandpiper (*Calidris ferruginea*) *
 Stilt Sandpiper (*Calidris himantopus*) *
 Buff-breasted Sandpiper (*Tryngites subruficollis*) *
 Ruff (*Philomachus pugnax*) *
 Short-billed Dowitcher (*Limnodromus griseus*)
 Long-billed Dowitcher (*Limnodromus scolopaceus*) *
 Jack Snipe (*Lymnocyrtus minimus*) *
 Common Snipe (*Gallinago gallinago*) HA
 Wilson's Phalarope (*Phalaropus tricolor*)
 Red-necked Phalarope (*Phalaropus lobatus*)
 Red Phalarope (*Phalaropus fulicaria*)
FAMILY: LARIDAE (Gulls and Terns)
 Pomarine Jaeger (*Stercorarius pomarinus*) #
 Parasitic Jaeger (*Stercorarius parasiticus*) #
 Long-tailed Jaeger (*Stercorarius longicaudus*) * #
 South Polar Skua (*Catharacta maccormicki*) * #
 Laughing Gull (*Larus atricilla*) * #
 Franklin's Gull (*Larus pipixcan*) *
 Little Gull (*Larus minutus*) *

Common Black-headed Gull (*Larus ridibundus*) *
 Bonaparte's Gull (*Larus philadelphia*) *
 Heermann's Gull (*Larus heermanni*) *
 Mew Gull (*Larus canus*) *
 Ring-billed Gull (*Larus delawarensis*) *
 California Gull (*Larus californicus*) *
 Herring Gull (*Larus argentatus*) *
 Thayer's Gull (*Larus thayeri*) *
 Lesser Black-backed Gull (*Larus fuscus*) *
 Yellow-footed Gull (*Larus livens*) *
 Western Gull (*Larus occidentalis*) *
 Glaucous-winged Gull (*Larus glaucescens*) *
 Glaucous Gull (*Larus hyperboreus*) *
 Black-legged Kittiwake (*Rissa tridactyla*) * #
 Sabine's Gull (*Xema sabini*) #
 Gull-billed Tern (*Sterna nilotica*) #
 Caspian Tern (*Sterna caspia*) *
 Royal Tern (*Sterna maxima*) *
 Elegant Tern (*Sterna elegans*) *
 Sandwich Tern (*Sterna sandvicensis*) *
 Common Tern (*Sterna hirundo*) *
 Arctic Tern (*Sterna paradisaea*) *
 Forster's Tern (*Sterna forsteri*) *
 Least Tern (*Sterna antillarum*) *
 California Least Tern (*S. a. browni*) FE CE CP
 Black Tern (*Chlidonias niger*) FE CE CP
 Black Skimmer (*Rynchops niger*) *
FAMILY: ALCIDAE (Auks, Murres, and Puffins)
 Common Murre (*Uria aalge*) #
 Thick-billed Murre (*Uria lomvia*) * #
 Pigeon Guillemot (*Cepphus columba*) #
 Marbled Murrelet (*Brachyramphus marmoratus*) #
 Xantus's Murrelet (*Synthliboramphus hypoleucus*) #
 Craveri's Murrelet (*Synthliboramphus craveri*) #
 Ancient Murrelet (*Synthliboramphus antiquus*) #
 Cassin's Auklet (*Ptychoramphus aleuticus*) #
 Parakeet Auklet (*Cyclorhynchus psittacula*) * #
 Crested Auklet (*Aethia cristatella*) * #
 Rhinoceros Auklet (*Cerorhinca monocerata*) #
 Tufted Puffin (*Fratercula cirrhata*) #
 Horned Puffin (*Fratercula corniculata*) * #

ORDER: COLUMBIFORMES (Pigeons and Doves)

FAMILY: COLUMBIDAE (Pigeons and Doves)
 Rock Dove (*Columba livia*) EX
 Band-tailed Pigeon (*Columba fasciata*) HA
 Ringed Turtle-Dove (*Streptopelia risoria*) HA EX
 Spotted Dove (*Streptopelia chinensis*) HA EX
 White-winged Dove (*Zenaida asiatica*) HA
 Mourning Dove (*Zenaida macroura*) HA
 Inca Dove (*Columbina inca*) HA
 Common Ground-Dove (*Columbina passerina*)

STATUS LEGEND

CE—Designated an endangered species by the California Fish and Game Commission
 CR—Designated a rare species by the California Fish and Game Commission
 CP—Fully protected species in California
 FE—Designated an endangered species by the federal government
 FT—Designated a threatened species by the federal government
 HA—Harvested species
 EX—Non-native species
 FS—Forest Service sensitive (see introduction)
 BS—Bureau of Land Management sensitive (see introduction)
 *—Irregular visitors to California
 #—Principally pelagic (found in open sea)

ORDER: CUCULIFORMES (Cuckoos and Relatives)

FAMILY: CUCULIDAE (Typical Cuckoos)
 Black-billed Cuckoo (*Coccyzus erythrophthalmus*) *
 Yellow-billed Cuckoo (*Coccyzus americanus*) CR
 California Yellow-billed Cuckoo (*C. a. occidentalis*) CR
 Greater Roadrunner (*Geococcyx californianus*) *
 Groove-billed Ani (*Crotophaga sulcirostris*) *

ORDER: STRIGIFORMES (Owls)

FAMILY: TYTONIDAE (Barn Owls)
 Common Barn-Owl (*Tyto alba*)
FAMILY: STRIGIDAE (Typical Owls)
 Flammulated Owl (*Otus flammeolus*)
 Western Screech-Owl (*Otus kennicottii*)
 Great Horned Owl (*Bubo virginianus*)
 Snowy Owl (*Nyctea scandiaca*) *
 Northern Pygmy-Owl (*Glaucidium gnoma*)
 Elf Owl (*Micrathene whitneyi*) CE
 Burrowing Owl (*Athene cucularia*)
 Spotted Owl (*Strix occidentalis*) FS
 Great Gray Owl (*Strix nebulosa*) CE FS
 Long-eared Owl (*Asio otus*)
 Short-eared Owl (*Asio flammeus*)
 Northern Saw-whet Owl (*Aegolius acadicus*)

ORDER: CAPRIMULGIFORMES (Goatsuckers and Relatives)

FAMILY: CAPRIMULGIDAE (Goatsuckers)
 Lesser Nighthawk (*Chordeiles acutipennis*)
 Common Nighthawk (*Chordeiles minor*)
 Common Poorwill (*Phalaenoptilus nuttallii*)
 Whip-poor-will (*Caprimulgus vociferus*)

ORDER: APODIFORMES (Swifts and Hummingbirds)

FAMILY: APODIDAE (Swifts)
 Black Swift (*Cypseloides niger*)
 Chimney Swift (*Chaetura pelagica*) *
 Vaux's Swift (*Chaetura vauxi*) *
 White-throated Swift (*Aeronautes saxatalis*)
FAMILY: TROCHILIDAE (Hummingbirds)
 Broad-billed Hummingbird (*Cyananthus latirostris*) *
 Violet-crowned Hummingbird (*Amazilia violiceps*) *
 Blue-throated Hummingbird (*Lampornis clemenciae*) *
 Black-chinned Hummingbird (*Archilochus alexandri*)
 Anna's Hummingbird (*Calypte anna*)
 Costa's Hummingbird (*Calypte costae*)
 Calliope Hummingbird (*Stellula calliope*)
 Broad-tailed Hummingbird (*Selasphorus platycercus*)
 Rufous Hummingbird (*Selasphorus rufus*)
 Allen's Hummingbird (*Selasphorus sasin*)

ORDER: CORACIIFORMES (Kingfishers and Relatives)

FAMILY: ALCEDINIDAE (Kingfishers)
 Belted Kingfisher (*Ceryle alcyon*)

ORDER: PICIFORMES (Woodpeckers and Relatives)

FAMILY: PICIDAE (Woodpeckers and Wrynecks)
 Lewis' Woodpecker (*Melanerpes lewis*)
 Red-headed Woodpecker (*Melanerpes erythrocephalus*) *
 Acorn Woodpecker (*Melanerpes formicivorus*)
 Gila Woodpecker (*Melanerpes uropygialis*) *
 Yellow-bellied Sapsucker (*Sphyrapicus varius*)
 Red-breasted Sapsucker (*Sphyrapicus ruber*)
 Williamson's Sapsucker (*Sphyrapicus thyroideus*)
 Ladder-backed Woodpecker (*Picoides scalaris*)
 Nuttall's Woodpecker (*Picoides nuttallii*)
 Downy Woodpecker (*Picoides pubescens*)
 Hairy Woodpecker (*Picoides villosus*)
 White-headed Woodpecker (*Picoides albolarvatus*)
 Black-backed Woodpecker (*Picoides arcticus*)
 Northern Flicker (*Colaptes auratus*)
 Pileated Woodpecker (*Dryocopus pileatus*)

ORDER: PASSERIFORMES (Perching Birds)

FAMILY: TYRANNIDAE (Tyrant Flycatchers)
 Olive-sided Flycatcher (*Contopus borealis*)
 Greater Pewee (*Contopus pertinax*) *
 Western Wood-Pewee (*Contopus sordidulus*) *
 Eastern Wood-Pewee (*Contopus virens*) *
 Yellow-bellied Flycatcher (*Empidonax flaviventris*) *
 Acadian Flycatcher (*Empidonax virescens*) *
 Willow Flycatcher (*Empidonax traillii*)

Least Flycatcher (<i>Empidonax minimus</i>)	*	Rufous-backed Robin (<i>Turdus rufopalliatu</i> s)	*
Hammond's Flycatcher (<i>Empidonax hammondii</i>)		American Robin (<i>Turdus migratorius</i>)	
Dusky Flycatcher (<i>Empidonax oberholseri</i>)		Varied Thrush (<i>Ixoreus naevius</i>)	
Gray Flycatcher (<i>Empidonax wrightii</i>)		Wrentit (<i>Chamaea fasciata</i>)	
Western Flycatcher (<i>Empidonax difficilis</i>)		FAMILY: MIMIDAE (Mockingbirds and Thrashers)	
Black Phoebe (<i>Sayornis nigricans</i>)		Gray Catbird (<i>Dumetella carolinensis</i>)	*
Eastern Phoebe (<i>Sayornis phoebe</i>)	*	Northern Mockingbird (<i>Mimus polyglottos</i>)	
Say's Phoebe (<i>Sayornis saya</i>)		Sage Thrasher (<i>Oreoscoptes montanus</i>)	
Vermilion Flycatcher (<i>Pyrocephalus rubinus</i>)		Brown Thrasher (<i>Toxostoma rufum</i>)	*
Dusky-capped Flycatcher (<i>Myiarchus tuberculifer</i>)	*	Bendire's Thrasher (<i>Toxostoma bendirei</i>)	
Ash-throated Flycatcher (<i>Myiarchus cinerascens</i>)		Curve-billed Thrasher (<i>Toxostoma curvirostre</i>)	*
Great Crested Flycatcher (<i>Myiarchus crinitus</i>)	*	California Thrasher (<i>Toxostoma redivivum</i>)	
Brown-crested Flycatcher (<i>Myiarchus tyrannulus</i>)		Crissal Thrasher (<i>Toxostoma dorsale</i>)	
Sulphur-bellied Flycatcher (<i>Myiodynastes luteiventris</i>)	*	Le Conte's Thrasher (<i>Toxostoma lecontei</i>)	
Tropical Kingbird (<i>Tyrannus melancholicus</i>)	*	FAMILY: MOTACILLIDAE (Wagtails and Pipits)	
Cassin's Kingbird (<i>Tyrannus vociferans</i>)	*	Yellow Wagtail (<i>Motacilla flava</i>)	*
Thick-billed Kingbird (<i>Tyrannus crassirostris</i>)	*	White Wagtail (<i>Motacilla alba</i>)	*
Western Kingbird (<i>Tyrannus verticalis</i>)		Red-throated Pipit (<i>Anthus cervinus</i>)	*
Eastern Kingbird (<i>Tyrannus tyrannus</i>)		Water Pipit (<i>Anthus spinoletta</i>)	
Scissor-tailed Flycatcher (<i>Tyrannus forficatus</i>)	*	Sprague's Pipit (<i>Anthus spragueii</i>)	*
FAMILY: ALAUDIDAE (Larks)		FAMILY: BOMBYCILLIDAE (Waxwings)	
Eurasian Skylark (<i>Alauda arvensis</i>)	*	Bohemian Waxwing (<i>Bombycilla garrulus</i>)	*
Horned Lark (<i>Eremophila alpestris</i>)		Cedar Waxwing (<i>Bombycilla cedrorum</i>)	
FAMILY: HIRUNDINIDAE (Swallows)		FAMILY: PTILOGONATIDAE (Silky Flycatchers)	
Purple Martin (<i>Progne subis</i>)		Phainopepla (<i>Phainopepla nitens</i>)	
Tree Swallow (<i>Tachycineta bicolor</i>)		FAMILY: LANIIDAE (Shrikes)	
Violet-green Swallow (<i>Tachycineta thalassina</i>)		Northern Shrike (<i>Lanius excubitor</i>)	
Northern Rough-winged Swallow (<i>Stelgidopteryx serripennis</i>)		Loggerhead Shrike (<i>Lanius ludovicianus</i>)	
Bank Swallow (<i>Riparia riparia</i>)		San Clemente Loggerhead Shrike (<i>L. l. mearnsi</i>)	FE
Cliff Swallow (<i>Hirundo pyrrhonota</i>)		FAMILY: STURNIDAE (Starlings)	
Barn Swallow (<i>Hirundo rustica</i>)		European Starling (<i>Sturnus vulgaris</i>)	EX
FAMILY: CORVIDAE (Jays, Magpies, and Crows)		FAMILY: VIREONIDAE (Typical Vireos)	
Gray Jay (<i>Perisoreus canadensis</i>)		White-eyed Vireo (<i>Vireo griseus</i>)	*
Steller's Jay (<i>Cyanocitta stelleri</i>)		Bell's Vireo (<i>Vireo bellii</i>)	
Blue Jay (<i>Cyanocitta cristata</i>)	*	Least Bell's Vireo (<i>V. b. pusillus</i>)	CE FS
Scrub Jay (<i>Aphelocoma coerulescens</i>)		Gray Vireo (<i>Vireo vicinior</i>)	
Pinyon Jay (<i>Gymnorhinus cyanocephalus</i>)		Solitary Vireo (<i>Vireo solitarius</i>)	
Clark's Nutcracker (<i>Nucifraga columbiana</i>)		Yellow-throated Vireo (<i>Vireo flavifrons</i>)	*
Black-billed Magpie (<i>Pica pica</i>)		Hutton's Vireo (<i>Vireo huttoni</i>)	
Yellow-billed Magpie (<i>Pica nuttalli</i>)		Warbling Vireo (<i>Vireo gilvus</i>)	
American Crow (<i>Corvus brachyrhynchos</i>)	HA	Philadelphia Vireo (<i>Vireo philadelphicus</i>)	*
Common Raven (<i>Corvus corax</i>)		Red-eyed Vireo (<i>Vireo olivaceus</i>)	*
FAMILY: PARIDAE (Titmice)		FAMILY: EMBERIZIDAE (Wood Warblers, Sparrows, Blackbirds and Relatives)	
Black-capped Chickadee (<i>Parus atricapillus</i>)		Blue-winged Warbler (<i>Vermivora pinus</i>)	*
Mountain Chickadee (<i>Parus gambeli</i>)		Golden-winged Warbler (<i>Vermivora chrysoptera</i>)	*
Chestnut-backed Chickadee (<i>Parus rufescens</i>)		Tennessee Warbler (<i>Vermivora peregrina</i>)	
Plain Titmouse (<i>Parus inornatus</i>)		Orange-crowned Warbler (<i>Vermivora celata</i>)	
FAMILY: REMIZIDAE (Verdin)		Nashville Warbler (<i>Vermivora ruficapilla</i>)	
Verdin (<i>Auriparus flaviceps</i>)		Virginia's Warbler (<i>Vermivora virginiae</i>)	
FAMILY: AEGITHALIDAE (Bushtit)		Lucy's Warbler (<i>Vermivora luciae</i>)	*
Bushtit (<i>Psaltriparus minimus</i>)		Northern Parula (<i>Parula americana</i>)	
FAMILY: SITTIDAE (Nuthatches)		Yellow Warbler (<i>Dendroica petechia</i>)	*
Red-breasted Nuthatch (<i>Sitta canadensis</i>)		Chestnut-sided Warbler (<i>Dendroica pensylvanica</i>)	*
White-breasted Nuthatch (<i>Sitta carolinensis</i>)		Magnolia Warbler (<i>Dendroica magnolia</i>)	*
Pygmy Nuthatch (<i>Sitta pygmaea</i>)		Cape May Warbler (<i>Dendroica tigrina</i>)	*
FAMILY: CERTHIIDAE (Creepers)		Black-throated Blue Warbler (<i>Dendroica caerulescens</i>)	*
Brown Creeper (<i>Certhia americana</i>)		Yellow-rumped Warbler (<i>Dendroica coronata</i>)	*
FAMILY: TROGLODYTIDAE (Wrens)		Black-throated Gray Warbler (<i>Dendroica nigrescens</i>)	*
Cactus Wren (<i>Campylorhynchus brunneicapillus</i>)		Townsend's Warbler (<i>Dendroica townsendi</i>)	
Rock Wren (<i>Salpinctes obsoletus</i>)		Hermit Warbler (<i>Dendroica occidentalis</i>)	*
Canyon Wren (<i>Catherpes mexicanus</i>)		Black-throated Green Warbler (<i>Dendroica virens</i>)	*
Bewick's Wren (<i>Thryomanes bewickii</i>)		Golden-cheeked Warbler (<i>Dendroica chrysoparia</i>)	*
House Wren (<i>Troglodytes aedon</i>)		Blackburnian Warbler (<i>Dendroica fusca</i>)	*
Winter Wren (<i>Troglodytes troglodytes</i>)		Yellow-throated Warbler (<i>Dendroica dominica</i>)	*
Sedge Wren (<i>Cistothorus platensis</i>)	*	Grace's Warbler (<i>Dendroica graciae</i>)	*
Marsh Wren (<i>Cistothorus palustris</i>)		Pine Warbler (<i>Dendroica pinus</i>)	*
FAMILY: CINCLIDAE (Dippers)		Prairie Warbler (<i>Dendroica discolor</i>)	*
American Dipper (<i>Cinclus mexicanus</i>)		Palm Warbler (<i>Dendroica palmarum</i>)	*
FAMILY: MUSCICAPIDAE (Old World Warblers, Gnatcatchers, Kinglets, Thrushes, Bluebirds, and Wrentit)		Bay-breasted Warbler (<i>Dendroica castanea</i>)	*
Dusky Warbler (<i>Phylloscopus fuscatus</i>)	*	Blackpoll Warbler (<i>Dendroica striata</i>)	*
Golden-crowned Kinglet (<i>Regulus satrapa</i>)		Cerulean Warbler (<i>Dendroica cerulea</i>)	*
Ruby-crowned Kinglet (<i>Regulus calendula</i>)		Black-and-white Warbler (<i>Mniotilta varia</i>)	*
Blue-gray Gnatcatcher (<i>Poliopitila caerulea</i>)		American Redstart (<i>Setophaga ruticilla</i>)	*
Black-tailed Gnatcatcher (<i>Poliopitila melanura</i>)		Prothonotary Warbler (<i>Protonotaria citrea</i>)	*
Northern Wheatear (<i>Oenanthe oenanthe</i>)	*	Worm-eating Warbler (<i>Helminthos vermivorus</i>)	*
Western Bluebird (<i>Sialia mexicana</i>)		Ovenbird (<i>Seiurus aurocapillus</i>)	*
Mountain Bluebird (<i>Sialia currucoides</i>)		Northern Waterthrush (<i>Seiurus noveboracensis</i>)	*
Townsend's Solitaire (<i>Myadestes townsendi</i>)		Louisiana Waterthrush (<i>Seiurus motacilla</i>)	*
Veery (<i>Catharus fuscescens</i>)	*	Kentucky Warbler (<i>Oporornis formosus</i>)	*
Gray-cheeked Thrush (<i>Catharus minimus</i>)	*	Connecticut Warbler (<i>Oporornis agilis</i>)	*
Swainson's Thrush (<i>Catharus ustulatus</i>)	*	Mourning Warbler (<i>Oporornis philadelphia</i>)	*
Hermit Thrush (<i>Catharus guttatus</i>)	*	MacGillivray's Warbler (<i>Oporornis tolmiei</i>)	*
Wood Thrush (<i>Hylocichla mustelina</i>)	*	Common Yellowthroat (<i>Geothlypis trichas</i>)	*

Hooded Warbler (<i>Wilsonia citrina</i>)	*	Chestnut-collared Longspur (<i>Calcarius ornatus</i>)	*
Wilson's Warbler (<i>Wilsonia pusilla</i>)	.	Snow Bunting (<i>Plectrophenax nivalis</i>)	*
Canada Warbler (<i>Wilsonia canadensis</i>)	*	Bobolink (<i>Dolichonyx oryzivorus</i>)	*
Red-faced Warbler (<i>Cardellina rubrifrons</i>)	*	Red-winged Blackbird (<i>Agelaius phoeniceus</i>)	*
Painted Redstart (<i>Myioborus pictus</i>)	*	Tricolored Blackbird (<i>Agelaius tricolor</i>)	*
Yellow-breasted Chat (<i>Icteria virens</i>)	*	Western Meadowlark (<i>Sturnella neglecta</i>)	*
Hepatic Tanager (<i>Piranga flava</i>)	*	Yellow-headed Blackbird (<i>Xanthocephalus xanthocephalus</i>)	*
Summer Tanager (<i>Piranga rubra</i>)	*	Rusty Blackbird (<i>Euphagus carolinus</i>)	*
Scarlet Tanager (<i>Piranga olivacea</i>)	*	Brewer's Blackbird (<i>Euphagus cyanocephalus</i>)	*
Western Tanager (<i>Piranga ludoviciana</i>)	*	Great-tailed Grackle (<i>Quiscalus mexicanus</i>)	*
Northern Cardinal (<i>Cardinalis cardinalis</i>)	*	Common Grackle (<i>Quiscalus quiscula</i>)	*
Pyrrhuloxia (<i>Cardinalis sinuatus</i>)	*	Bronzed Cowbird (<i>Molothrus aeneus</i>)	*
Rose-breasted Grosbeak (<i>Pheucticus ludovicianus</i>)	*	Brown-headed Cowbird (<i>Molothrus ater</i>)	*
Black-headed Grosbeak (<i>Pheucticus melanocephalus</i>)	*	Orchard Oriole (<i>Icterus spurius</i>)	*
Blue Grosbeak (<i>Guiraca caerulea</i>)	*	Hooded Oriole (<i>Icterus cucullatus</i>)	*
Luzuli Bunting (<i>Passerina amoena</i>)	*	Streak-backed Oriole (<i>Icterus pustulatus</i>)	*
Indigo Bunting (<i>Passerina cyanea</i>)	*	Northern Oriole (<i>Icterus galbula</i>)	*
Varied Bunting (<i>Passerina versicolor</i>)	*	Scott's Oriole (<i>Icterus parisorum</i>)	*
Painted Bunting (<i>Passerina ciris</i>)	*	FAMILY: FRINGILLIDAE (Finches)	
Dickcissel (<i>Spiza americana</i>)	*	Rosy Finch (<i>Leucosticte arctoa</i>)	
Green-tailed Towhee (<i>Pipilo chlorurus</i>)	*	Pine Grosbeak (<i>Pinicola enucleator</i>)	
Rufous-sided Towhee (<i>Pipilo erythrophthalmus</i>)	*	Purple Finch (<i>Carpodacus purpureus</i>)	
Brown Towhee (<i>Pipilo fuscus</i>)	*	Cassin's Finch (<i>Carpodacus cassinii</i>)	
Inyo Brown Towhee (<i>P. f. eremophilus</i>)	CE	House Finch (<i>Carpodacus mexicanus</i>)	
Abert's Towhee (<i>Pipilo aberti</i>)	*	Red Crossbill (<i>Loxia curvirostra</i>)	
Cassin's Sparrow (<i>Aimophila cassinii</i>)	*	White-winged Crossbill (<i>Loxia leucoptera</i>)	
Rufous-crowned Sparrow (<i>Aimophila ruficeps</i>)	*	Common Redpoll (<i>Carduelis flammea</i>)	*
American Tree Sparrow (<i>Spizella arborea</i>)	*	Pine Siskin (<i>Carduelis pinus</i>)	
Chipping Sparrow (<i>Spizella passerina</i>)	*	Lesser Goldfinch (<i>Carduelis psaltria</i>)	
Clay-colored Sparrow (<i>Spizella pallida</i>)	*	Lawrence's Goldfinch (<i>Carduelis lawrencei</i>)	
Brewer's Sparrow (<i>Spizella breweri</i>)	*	American Goldfinch (<i>Carduelis tristis</i>)	
Field Sparrow (<i>Spizella pusilla</i>)	*	Evening Grosbeak (<i>Coccothraustes vespertinus</i>)	
Black-chinned Sparrow (<i>Spizella atrogularis</i>)	*	FAMILY: PASSERIDAE (Weaver Finches)	
Vesper Sparrow (<i>Poocetes gramineus</i>)	*	House Sparrow (<i>Passer domesticus</i>)	EX
Lark Sparrow (<i>Chondestes grammacus</i>)	*		
Black-throated Sparrow (<i>Amphispiza bilineata</i>)	*		
Sage Sparrow (<i>Amphispiza belli</i>)	*		
San Clemente Sage Sparrow (<i>A. b. clementeae</i>)	FT		
Lark Bunting (<i>Calamospiza melanocorys</i>)	*	Class: MAMMALIA	
Savannah Sparrow (<i>Passerculus sandwichensis</i>)	CE	ORDER: MARSUPIALIA (Opossums, Kangaroos, and Relatives)	
Belding's Savannah Sparrow (<i>P. s. beldingi</i>)	*	FAMILY: DIDELPHIDAE (Opossums)	
Baird's Sparrow (<i>Ammodramus bairdii</i>)	*	Virginia Opossum (<i>Didelphis virginiana</i>)	HA EX
Grasshopper Sparrow (<i>Ammodramus savannarum</i>)	*	ORDER: INSECTIVORA (Shrews and Moles)	
Le Conte's Sparrow (<i>Ammodramus leconteii</i>)	*	FAMILY: SORICIDAE (Shrews)	
Sharp-tailed Sparrow (<i>Ammodramus caudacutus</i>)	*	Mt. Lyell Shrew (<i>Sorex lyelli</i>)	
Fox Sparrow (<i>Passerella iliaca</i>)	*	Vagrant Shrew (<i>Sorex vagrans</i>)	
Song Sparrow (<i>Melospiza melodia</i>)	*	Dusky Shrew (<i>Sorex monticolus</i>)	
Santa Barbara Song Sparrow (<i>M. m. graminea</i>)	FE (Extinct)	Pacific Shrew (<i>Sorex pacificus</i>)	
Lincoln's Sparrow (<i>Melospiza lincolni</i>)	*	Ornate Shrew (<i>Sorex ornatus</i>)	
Swamp Sparrow (<i>Melospiza georgiana</i>)	*	Santa Catalina Shrew (<i>Sorex willetti</i>)	
White-throated Sparrow (<i>Zonotrichia albicollis</i>)	*	Inyo Shrew (<i>Sorex tenellus</i>)	
Golden-crowned Sparrow (<i>Zonotrichia atricapilla</i>)	*	Water Shrew (<i>Sorex palustris</i>)	
White-crowned Sparrow (<i>Zonotrichia leucophrys</i>)	*	Marsh Shrew (<i>Sorex bendirii</i>)	
Harris' Sparrow (<i>Zonotrichia querula</i>)	*	Trowbridge's Shrew (<i>Sorex trowbridgii</i>)	
Dark-eyed Junco (<i>Junco hyemalis</i>)	*	Merriam's Shrew (<i>Sorex merriami</i>)	
McCown's Longspur (<i>Calcarius mccownii</i>)	*	Desert Shrew (<i>Notiosorex crawfordi</i>)	
Lapland Longspur (<i>Calcarius lapponicus</i>)	*	FAMILY: TALPIDAE (Moles)	
		Shrew-mole (<i>Neurotrichus gibbsii</i>)	
		Townsend's Mole (<i>Scapanus townsendii</i>)	
		Coast Mole (<i>Scapanus orarius</i>)	
		Broad-footed Mole (<i>Scapanus latimanus</i>)	
		ORDER: CHIROPTERA (Bats)	
		FAMILY: PHYLLOSTOMATIDAE (Leaf-nosed Bats)	
		California Leaf-nosed Bat (<i>Macrotus californicus</i>)	
		Long-tongued Bat (<i>Choeronycteris mexicana</i>)	
		FAMILY: VESPERTILIONIDAE (Vespertilionid Bats)	
		Little Brown Myotis (<i>Myotis lucifugus</i>)	
		Arizona Myotis (<i>Myotis occultus</i>)	
		Yuma Myotis (<i>Myotis yumanensis</i>)	
		Cave Myotis (<i>Myotis velifer</i>)	
		Long-eared Myotis (<i>Myotis evotis</i>)	
		Fringed Myotis (<i>Myotis thysanodes</i>)	
		Long-legged Myotis (<i>Myotis volans</i>)	
		California Myotis (<i>Myotis californicus</i>)	
		Small-footed Myotis (<i>Myotis leibii</i>)	
		Silver-haired Bat (<i>Lasionycteris noctivagans</i>)	
		Western Pipistrelle (<i>Pipistrellus hesperus</i>)	
		Big Brown Bat (<i>Eptesicus fuscus</i>)	
		Red Bat (<i>Lasiurus borealis</i>)	

STATUS LEGEND

- CE—Designated an endangered species by the California Fish and Game Commission
- CR—Designated a rare species by the California Fish and Game Commission
- CP—Fully protected species in California
- FE—Designated an endangered species by the federal government
- FT—Designated a threatened species by the federal government
- HA—Harvested species
- EX—Non-native species
- FS—Forest Service sensitive (see Introduction)
- BS—Bureau of Land Management sensitive (see Introduction)
- *—Irregular visitors to California
- #—Principally pelagic (found in open sea)

- Hoary Bat (*Lasiurus cinereus*)
 Southern Yellow Bat (*Lasiurus ega*)
 Spotted Bat (*Euderma maculatum*)
 Townsend's Big-eared Bat (*Plecotus townsendii*)
 Pallid bat (*Antrozous pallidus*)
FAMILY: MOLOSSIDAE (Free-tailed Bats)
 Brazilian Free-tailed Bat (*Tadarida brasiliensis*)
 Pocketed Free-tailed Bat (*Tadarida feroxosacca*)
 Big Free-tailed Bat (*Tadarida macrotis*)
 Western Mastiff Bat (*Eumops perotis*)
- ORDER: LAGOMORPHA** (Rabbits, Hares, and Pikas)
- FAMILY: OCHOTONIDAE** (Pikas)
 Pika (*Ochotona princeps*)
- FAMILY: LEPORIDAE** (Rabbits and Hares)
 Pygmy Rabbit (*Brachylagus idahoensis*) HA
 Brush Rabbit (*Sylvilagus bachmani*) HA
 Nuttall's Cottontail (*Sylvilagus nuttallii*) HA
 Desert Cottontail (*Sylvilagus audubonii*) HA
 European Rabbit (*Oryctolagus cuniculus*) EX
 Snowshoe Hare (*Lepus americanus*) HA
 White-tailed Hare (*Lepus townsendii*) HA
 Black-tailed Hare (*Lepus californicus*) HA
- ORDER: RODENTIA** (Squirrels, Rats, Mice, and Relatives)
- FAMILY: APLODONTIDAE** (Mountain Beaver)
 Mountain beaver (*Aplodontia rufa*)
- FAMILY: SCIURIDAE** (Squirrels, Chipmunks, and Marmots)
 Alpine Chipmunk (*Tamias alpinus*)
 Least Chipmunk (*Tamias minimus*)
 Yellow-pine Chipmunk (*Tamias amoenus*)
 Yellow-cheeked Chipmunk (*Tamias ochrogenys*)
 Allen's Chipmunk (*Tamias senex*)
 Siskiyou Chipmunk (*Tamias siskiyou*)
 Sonoma Chipmunk (*Tamias sonomae*)
 Merriam's Chipmunk (*Tamias merriami*)
 California Chipmunk (*Tamias obscurus*)
 Long-eared Chipmunk (*Tamias quadrimaculatus*)
 Lodgepole Chipmunk (*Tamias speciosus*)
 Mt. Pinos Chipmunk (*T. s. callipeplus*) FS
 Panamint Chipmunk (*Tamias panamintinus*)
 Uinta Chipmunk (*Tamias umbrinus*)
 Yellow-bellied Marmot (*Marmota flaviventris*)
 White-tailed Antelope Squirrel (*Ammospermophilus leucurus*)
 San Joaquin Antelope Squirrel (*Ammospermophilus nelsoni*) CR
 Townsend's Ground Squirrel (*Spermophilus townsendii*)
 Belding's Ground Squirrel (*Spermophilus beldingi*)
 Rock Squirrel (*Spermophilus variegatus*)
 California Ground Squirrel (*Spermophilus beecheyi*)
 Mohave Ground Squirrel (*Spermophilus mohavensis*) CR
 Round-tailed Ground Squirrel (*Spermophilus tereticaudus*)
 Golden-mantled Ground Squirrel (*Spermophilus lateralis*)
 Gray Squirrel (*Sciurus carolinensis*) EX HA
 Western Gray Squirrel (*Sciurus griseus*) HA
 Fox Squirrel (*Sciurus niger*) EX HA
 Douglas' Squirrel (*Tamiasciurus douglasii*) HA
 Northern Flying Squirrel (*Glaucomys sabrinus*) HA
- FAMILY: GEOMYIDAE** (Pocket Gophers)
 Botta's Pocket Gopher (*Thomomys bottae*)
 Townsend's Pocket Gopher (*Thomomys townsendii*)
 Northern Pocket Gopher (*Thomomys talpoides*)
 Western Pocket Gopher (*Thomomys mazama*)
 Mountain Pocket Gopher (*Thomomys monticola*)
- FAMILY: HETEROMYIDAE** (Pocket Mice and Kangaroo Rats)
 Little Pocket Mouse (*Perognathus longimembris*)
 San Joaquin Pocket Mouse (*Perognathus inornatus*)
 Great Basin Pocket Mouse (*Perognathus parvus*)
 White-eared Pocket Mouse (*Perognathus alticola*)
 Yellow-eared Pocket Mouse (*Perognathus xanthonotus*)
 Long-tailed Pocket Mouse (*Perognathus formosus*)
 Bailey's Pocket Mouse (*Perognathus baileyi*)
 Desert Pocket Mouse (*Perognathus penicillatus*)
 San Diego Pocket Mouse (*Perognathus fallax*)
 California Pocket Mouse (*Perognathus californicus*)
 Spiny Pocket Mouse (*Perognathus spinatus*)
 Dark Kangaroo Mouse (*Microdipodops megacephalus*)
 Pale Kangaroo Mouse (*Microdipodops pallidus*)
 Ord's Kangaroo Rat (*Dipodomys ordii*)
 Chisel-toothed Kangaroo Rat (*Dipodomys microps*)
 Big-eared Kangaroo Rat (*Dipodomys elephantinus*)
 *Narrow-faced Kangaroo Rat (*Dipodomys venustus*)
 Pacific Kangaroo Rat (*Dipodomys agilis*)
 Heermann's Kangaroo Rat (*Dipodomys heermanni*)
- Morro Bay Kangaroo Rat (*D. h. morroensis*) FE CE CP
 California Kangaroo Rat (*Dipodomys californicus*)
 Giant Kangaroo Rat (*Dipodomys ingens*) CE
 Panamint Kangaroo Rat (*Dipodomys panamintinus*)
 Stephens' Kangaroo Rat (*Dipodomys stephensi*) CR
 Desert Kangaroo Rat (*Dipodomys deserti*)
 Merriam's Kangaroo Rat (*Dipodomys merriami*)
 San Joaquin Kangaroo Rat (*Dipodomys nitratoides*)
 Fresno Kangaroo Rat (*D. n., exilis*) CE
FAMILY: CASTORIDAE (Beavers)
 Beaver (*Castor canadensis*) HA
FAMILY: CRICETIDAE (Deer Mice, Voles, and Relatives)
 Western Harvest Mouse (*Reithrodontomys megalotis*)
 Salt Marsh Harvest Mouse (*Reithrodontomys ruiiventris*) FE CE CP
 Cactus Mouse (*Peromyscus eremicus*)
 California Mouse (*Peromyscus californicus*)
 Deer Mouse (*Peromyscus maniculatus*)
 Canyon Mouse (*Peromyscus crinitus*)
 Brush Mouse (*Peromyscus boylii*)
 Pinyon Mouse (*Peromyscus truei*)
 Northern Grasshopper Mouse (*Onychomys leucogaster*)
 Southern Grasshopper Mouse (*Onychomys torridus*)
 Hispid Cotton Rat (*Sigmodon hispidus*)
 Arizona Cotton Rat (*Sigmodon arizonae*)
 White-throated Woodrat (*Neotoma albigula*)
 Desert Woodrat (*Neotoma lepida*)
 Dusky-footed Woodrat (*Neotoma fuscipes*)
 Bushy-tailed Woodrat (*Neotoma cinerea*)
 Western Red-backed Vole (*Clethrionomys californicus*)
 Heather Vole (*Phenacomys intermedius*)
 White-footed Vole (*Arborimus albipes*)
 Red Tree Vole (*Arborimus longicaudus*)
 Montane Vole (*Microtus montanus*)
 California Vole (*Microtus californicus*)
 Amargosa Vole (*M. c. scirpensis*) CE
 Townsend's Vole (*Microtus townsendii*)
 Long-tailed Vole (*Microtus longicaudus*)
 Creeping Vole (*Microtus oregoni*)
 Sagebrush Vole (*Lagurus curtatus*)
 Muskrat (*Ondatra zibethicus*) HA EX
- FAMILY: MURIDAE** (Old World Rats and Mice)
 Black Rat (*Rattus rattus*) EX
 Norway Rat (*Rattus norvegicus*) EX
 House Mouse (*Mus musculus*) EX
- FAMILY: ZAPODIDAE** (Jumping Mice)
 Western Jumping Mouse (*Zapus princeps*)
 Pacific Jumping Mouse (*Zapus trinotatus*)
- FAMILY: ERETHIZONTIDAE** (New World Porcupines)
 Porcupine (*Erethizon dorsatum*)
- ORDER: MYSTICETI** (Baleen Whales)
- FAMILY: ESCHRICHTIIDAE** (Gray Whale)
 Gray Whale (*Eschrichtius robustus*) FE
- FAMILY: BALAENOPTERIDAE** (Rorquals)
 Minke Whale (*Balaenoptera acutorostrata*)
 Sei Whale (*Balaenoptera borealis*) FE
 Blue Whale (*Balaenoptera musculus*) FE
 Fin Whale (*Balaenoptera physalus*) FE
 Hump-backed Whale (*Megaptera novaeangliae*) FE
- FAMILY: BALAENIDAE** (Right Whales)
 Black Right Whale (*Balaena glacialis*) FE
 Pacific Right Whale (*B. g. japonica*) CP
- ORDER: ODONTOCETI** (Toothed Whales)
- FAMILY: ZIPHIIDAE** (Beaked Whales)
 North Pacific Bottle-nosed Whale (*Berardius bairdii*)
 Goose-beaked Whale (*Ziphius cavirostris*)
 North Pacific Beaked Whale (*Mesoplodon stejnegeri*)
 Moore's Beaked Whale (*Mesoplodon carlhubbsi*)
 Dense-beaked Whale (*Mesoplodon densirostris*)
- FAMILY: PHYSETERIDAE** (Sperm Whale)
 Sperm Whale (*Physeter macrocephalus*) FE
- FAMILY: KOGIIDAE** (Pygmy Sperm Whales)
 Pygmy Sperm Whale (*Kogia breviceps*)
 Dwarf Sperm Whale (*Kogia simus*)
- FAMILY: DELPHINIDAE** (Porpoises and Dolphins)
 Rough-toothed Dolphin (*Steno bredanensis*)
 Bottle-nosed Dolphin (*Tursiops truncatus*)
 Pantropical Spotted Dolphin (*Stenella attenuata*)
 Striped Dolphin (*Stenella coeruleoalba*)
 Common Dolphin (*Delphinus delphis*)
 Pacific White-sided Dolphin (*Lagenorhynchus obliquidens*)

Grampus (Risso's Dolphin) (*Grampus griseus*)
 False Killer Whale (*Pseudorca crassidens*)
 Short-finned Pilot Whale (*Globicephala macrorhynchus*)
 Killer Whale (*Orcinus orca*)
 Northern Right-whale Dolphin (*Lissodelphis borealis*)
FAMILY: PHOCOENIDAE
 Harbor Porpoise (*Phocoena phocoena*)
 Dall's Porpoise (*Phocoenoides dalli*)

ORDER: CARNIVORA (Carnivores)

FAMILY: CANIDAE (Foxes, Wolves, and Relatives)
 Coyote (*Canis latrans*) HA
 Red Fox (*Vulpes vulpes*)
 Sierra Nevada Red Fox (*V. v. necator*) CR FS
 Kit Fox (*Vulpes macrotis*)
 San Joaquin Kit Fox (*V. m. mutica*) FE CR
 Gray Fox (*Urocyon cinereargenteus*) HA
 Island Fox (*Urocyon littoralis*) CR
FAMILY: URSIDAE (Bears)
 Black Bear (*Ursus americanus*) HA
FAMILY: PROCYONIDAE (Raccoons and Relatives)
 Ringtail (*Bassariscus astutus*) CP
 Raccoon (*Procyon lotor*) HA
FAMILY: MUSTELIDAE (Weasels, Badgers, and Relatives)
 Marten (*Martes americana*)
 Fisher (*Martes pennanti*)
 Ermine (*Mustela erminea*) HA
 Long-tailed Weasel (*Mustela frenata*) HA
 Mink (*Mustela vison*) HA
 Wolverine (*Gulo gulo*) CR FS CP
 Badger (*Taxidea taxus*) HA
 Western Spotted Skunk (*Spilogale gracilis*) HA
 Striped Skunk (*Mephitis mephitis*) HA
 River Otter (*Lutra canadensis*)
 Sea Otter (*Enhydra lutris*) FT CP
 Southern Sea Otter (*E. l. nereis*) FT CP
FAMILY: FELIDAE (Cats)
 Mountain Lion (*Felis concolor*)
 Bobcat (*Lynx rufus*) HA
FAMILY: OTARIDAE (Eared Seals)
 Northern Fur Seal (*Callorhinus ursinus*)
 Guadalupe Fur Seal (*Arctocephalus townsendi*) CR CP
 Northern Sea Lion (*Eumetopias jubatus*)
 California Sea Lion (*Zalophus californianus*)
FAMILY: PHOCIDAE (Hair Seals)
 Harbor Seal (*Phoca vitulina*)
 Ribbon Seal (*Phoca fasciata*)
 Northern Elephant Seal (*Mirounga angustirostris*) CP

ORDER: PERISSODACTYLA (Horses, Tapirs, and Relatives)

FAMILY: EQUIDAE (Horses)
 Horse (*Equus caballus*) EX
 Burro (*Equus asinus*) EX

ORDER: ARTIODACTYLA (Pigs, Deer, and Relatives)

FAMILY: SUIDAE (Pigs)
 Wild Pig (*Sus scrofa*) HA EX
FAMILY: CERVIDAE (Deer, Elk, and Relatives)
 Wapiti or Elk (*Cervus elaphus*) HA
 Fallow Deer (*Cervus dama*) HA EX
 Sambar (*Cervus unicolor*) HA EX
 Axis Deer (*Cervus axis*) HA EX
 Mule Deer (*Odocoileus hemionus*) HA
FAMILY: ANTILOCAPRIDAE (Pronghorn)
 Pronghorn (*Antilocapra americana*) HA
FAMILY: BOVIDAE (Sheep, Goats, and Relatives)
 Mountain Sheep (*Ovis canadensis*) CR FS BS CP
 California Bighorn Sheep (*O. c. californiana*) CR FS CP
 Peninsular Bighorn Sheep (*O. c. cremnobates*) CR FS CP
 Nelson's Bighorn Sheep (*O. c. nelsoni*) FS BS CP
 Barbary Sheep (*Ammotragus lervia*) HA EX
 Himalayan Tahr (*Hemitragus jemlahicus*) HA EX
 Feral Goat (*Capra hircus*) HA EX

OLD NAMES—NEW NAMES

In the class *Aves*, birds, recent changes in common names of some birds have been made by the American Ornithologists' Union. Following are the old and new names of some birds which might otherwise be unrecognizable, in the order they appear in the list.

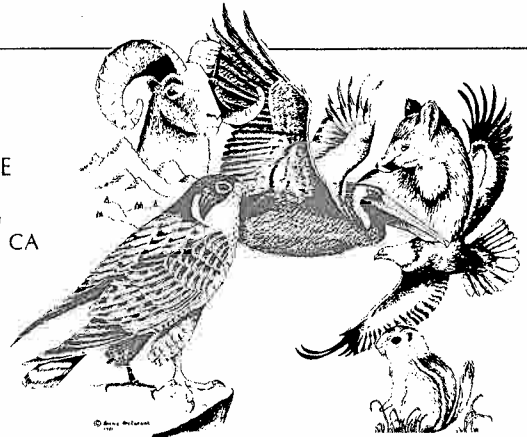
Old name	New name
Scaled Petrel	Mottled Petrel
Manx Shearwater	Black-vented Shearwater
Galapagos Storm-Petrel	Wedge-rumped Storm-Petrel
Louisiana Heron	Tri colored Heron
Green Heron	Green-backed Heron
Whistling Swan	Tundra Swan
White-tailed Kite	Black-shouldered Kite
Marsh Hawk	Northern Harrier
Common Gallinule	Common Moorhen
Northern Phalarope	Red-necked Phalarope
Thin-billed Murre	Common Murre
Black-backed Three-toed Woodpecker	Black-backed Woodpecker
Common Flicker	Northern Flicker
Coues' Flycatcher	Greater Pewee
Olivaceous Flycatcher	Dusky-capped Flycatcher
Wied's Crested Flycatcher	Brown-crested Flycatcher
Scarlet-headed Oriole	Streak-backed Oriole

STATUS LEGEND

- CE— Designated an endangered species by the California Fish and Game Commission
- CR— Designated a rare species by the California Fish and Game Commission
- CP— Fully protected species in California
- FE— Designated an endangered species by the federal government
- FT— Designated a threatened species by the federal government
- HA— Harvested species
- EX— Non-native species
- FS— Forest Service sensitive (see introduction)
- BS— Bureau of Land Management sensitive (see introduction)
- *— Irregular visitors to California
- #— Principally pelagic (found in open sea)

WILDLIFE

Box DFG
 Sacramento, CA
 95801



You can help nongame wildlife and receive an attractive decal with a donation to the DFG's Nongame Wildlife Conservation program. Every dollar goes directly to benefit such California critters as the peregrine falcon, desert tortoise and bighorn sheep. Your donation is tax deductible and you'll receive a periodic newsletter letting you know how your money is being spent. Send check or money order to the above address. Every dollar helps.