

USDA  
Forest  
Service



**PNW  
Research  
Station**  
PO Box 3890  
620 SW Main  
Suite 400  
Portland OR  
97208

For more  
information  
contact:

Bill vanHees  
bvanhees@  
fs.fed.us

907-743-9412

or

John Morton  
John\_M.Morton@fws.  
gov

907-260-2815

or

visit our  
website:

[www.fs.fed.us/  
pnw/fia](http://www.fs.fed.us/pnw/fia)



## Kenai National Wildlife Refuge Adjunct Inventory

### Background:

- Both the Pacific Northwest Forest Inventory and Analysis (PNW-FIA) program and the Kenai National Wildlife Refuge (KNWR) conduct research regarding the forest resources of the Kenai Peninsula (Figure 1).
- The FIA mission is to inventory the present and prospective conditions of the forests of the United States.
- The KNWR manages 2 million acres of boreal forest on the Kenai Peninsula and is charged with conservation of fish and wildlife populations and habitats in their natural diversity.
- KNWR has an interest in determining the distribution of flora and fauna within the refuge boundaries, as well as monitoring changes over time.

### Opportunity:

Knowledge of forest and vegetation attributes is critical to effective monitoring.

Systematic sampling of permanent plots, a hallmark of FIA's inventory design, is appropriate for long-term ecological monitoring.

Simultaneous sampling of flora and fauna allows development of models such as species-habitat relations.



**Figure 1.** Kenai National Wildlife Refuge, Kenai Peninsula, Alaska.

## The solution:

- KNWR and FIA have agreed to conduct inventories at the same locations at the same time (Figure 2)
- KNWR has resources, facilities, and expertise to inventory and monitor faunal species. FIA has expertise in extensive forest inventory. KNWR must minimize all activities within designated wilderness areas.
- By combining the forces of KNWR and FIA sampling activities will be minimized, satisfying both agencies' needs.

## Who measures what?

- Vascular plants → FIA
- Nonvascular plants → KNWR/FIA
- Birds → KNWR
- Mammals → KNWR
- Insects → KNWR

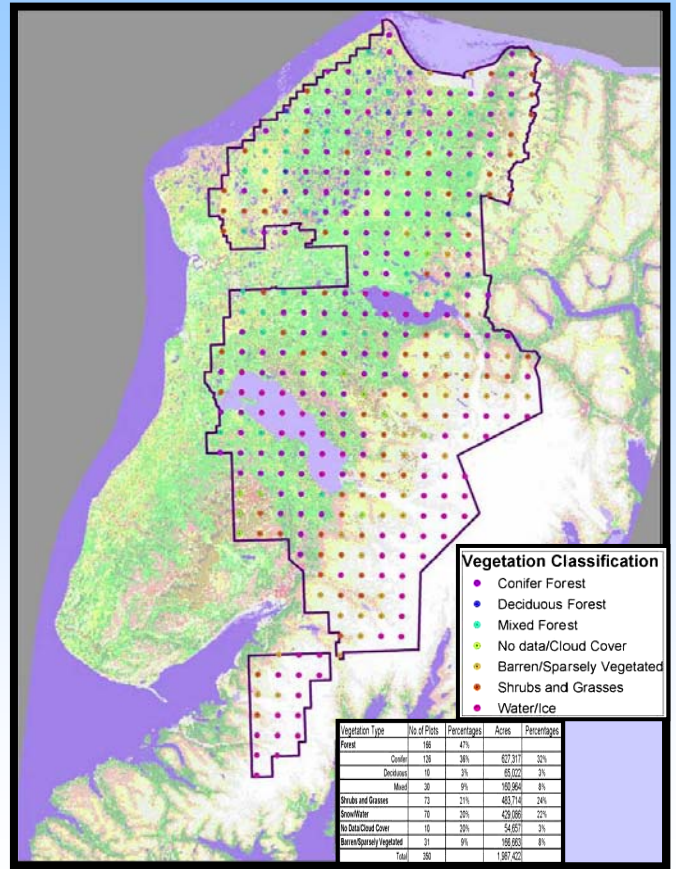


Figure 2. Plots located within the Kenai National Wildlife Refuge, Kenai Peninsula, Alaska

## Benefits:

- **To KNWR:** Tree and vegetation data will be spatially and temporally consistent with faunal data. This consistency will strengthen the rigor of wildlife population and habitat modeling.
- **To FIA:** Collection of faunal data concurrently with forest inventory data will provide unique opportunities to FIA researchers studying vegetation on the Kenai Peninsula.