

Alternative 5



This multiple-use alternative would accentuate recreation opportunities and noncommodity services and also provide commodity outputs that complement or fit within recreation objectives.

DRAFT Environmental Impact Statement

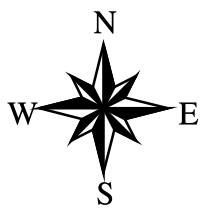
Medicine Bow/Routt National Forest
Thunder Basin National Grassland

Alternative 4 on reverse 1999

PLEASE NOTE: Management areas are defined as parts of the grasslands that are managed for a particular emphasis. Each management area has a prescription that consists of a theme, desired conditions, and standards and guidelines that apply to it. The management area prescriptions are grouped into eight major categories, based on a continuum from least evidence of disturbance (Category 1) to most (Category 8).

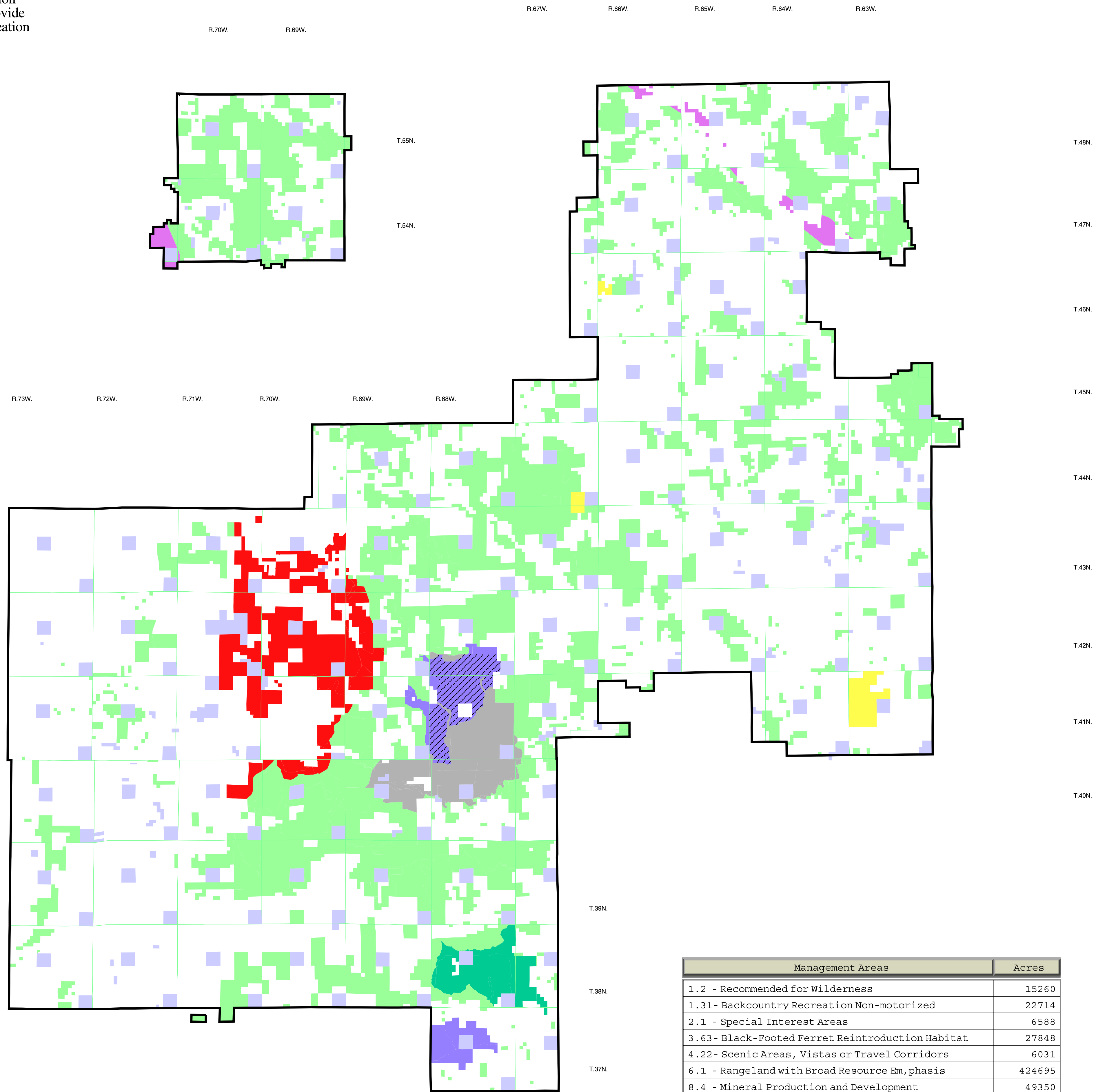
The management areas on this map are further explained in Chapter 3 of the Revised Land and Resource Management Plan. The differences between alternatives may be better understood if the reader compares alternative maps while reviewing the accompanying Environmental Impact Statement.

The management area boundaries on this map were computer generated. These lines and their locations are only approximate at this scale.

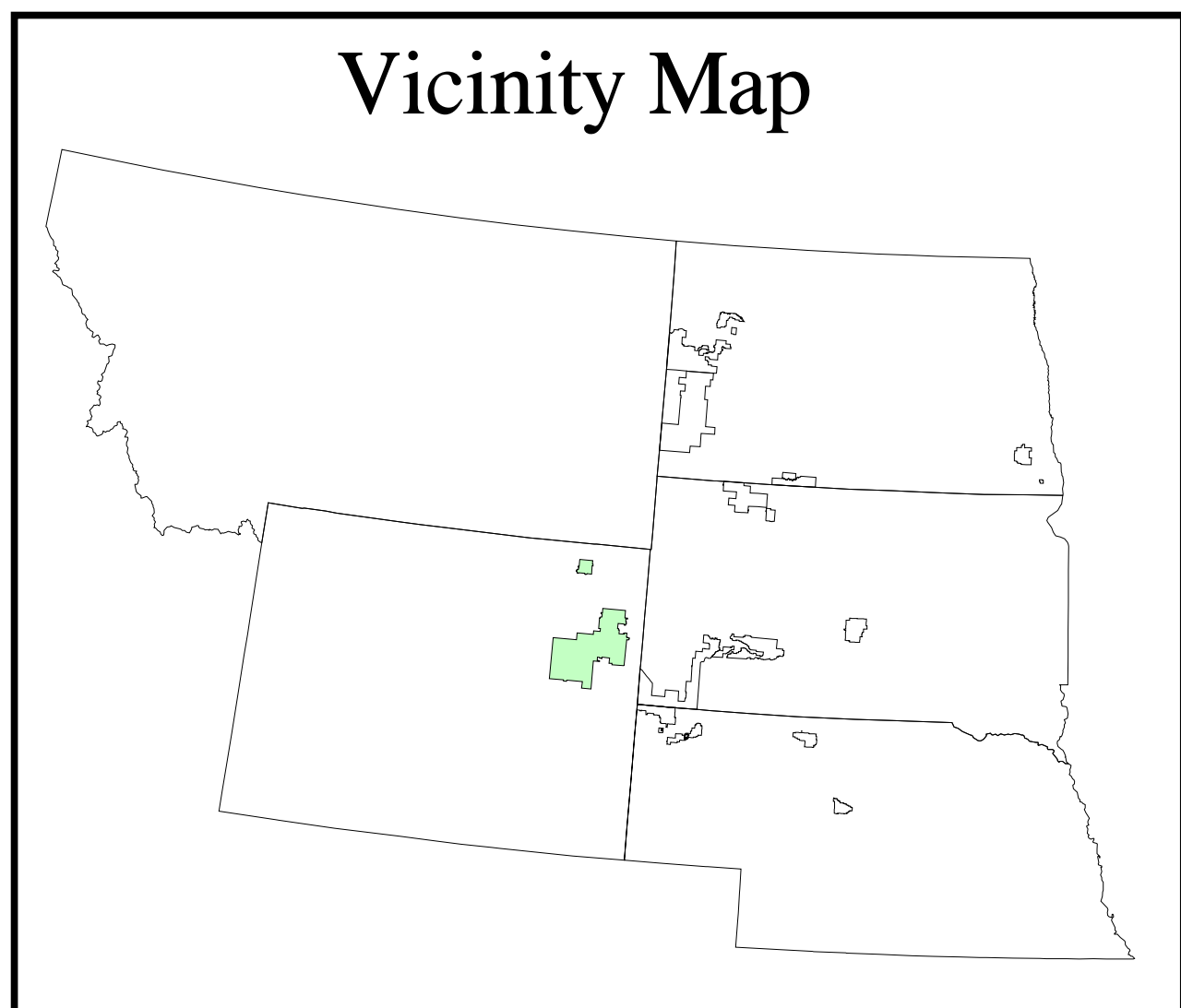


5 0 5 10 Miles

1 : 253,440
1/4 inch = 1 mile



Management Areas	Acres
1.2 - Recommended for Wilderness	15260
1.31- Backcountry Recreation Non-motorized	22714
2.1 - Special Interest Areas	6588
3.63- Black-Footed Ferret Reintroduction Habitat	27848
4.22- Scenic Areas, Vistas or Travel Corridors	6031
6.1 - Rangeland with Broad Resource Emphasis	424695
8.4 - Mineral Production and Development	49350



Legend

Management Areas

- 1.2 - Recommended For Wilderness
- 1.31 - Backcountry Recreation Non-motorized
- 2.1 - Special Interest Areas
- 3.63 - Black-Footed Ferret Reintroduction Habitat
- 4.22 - Scenic Areas, Vistas or Travel Corridors
- 6.1 - Rangeland with Broad Resource Emphasis
- 8.4 - Mineral Production and Development

Administrative Boundaries

Township & Range Lines

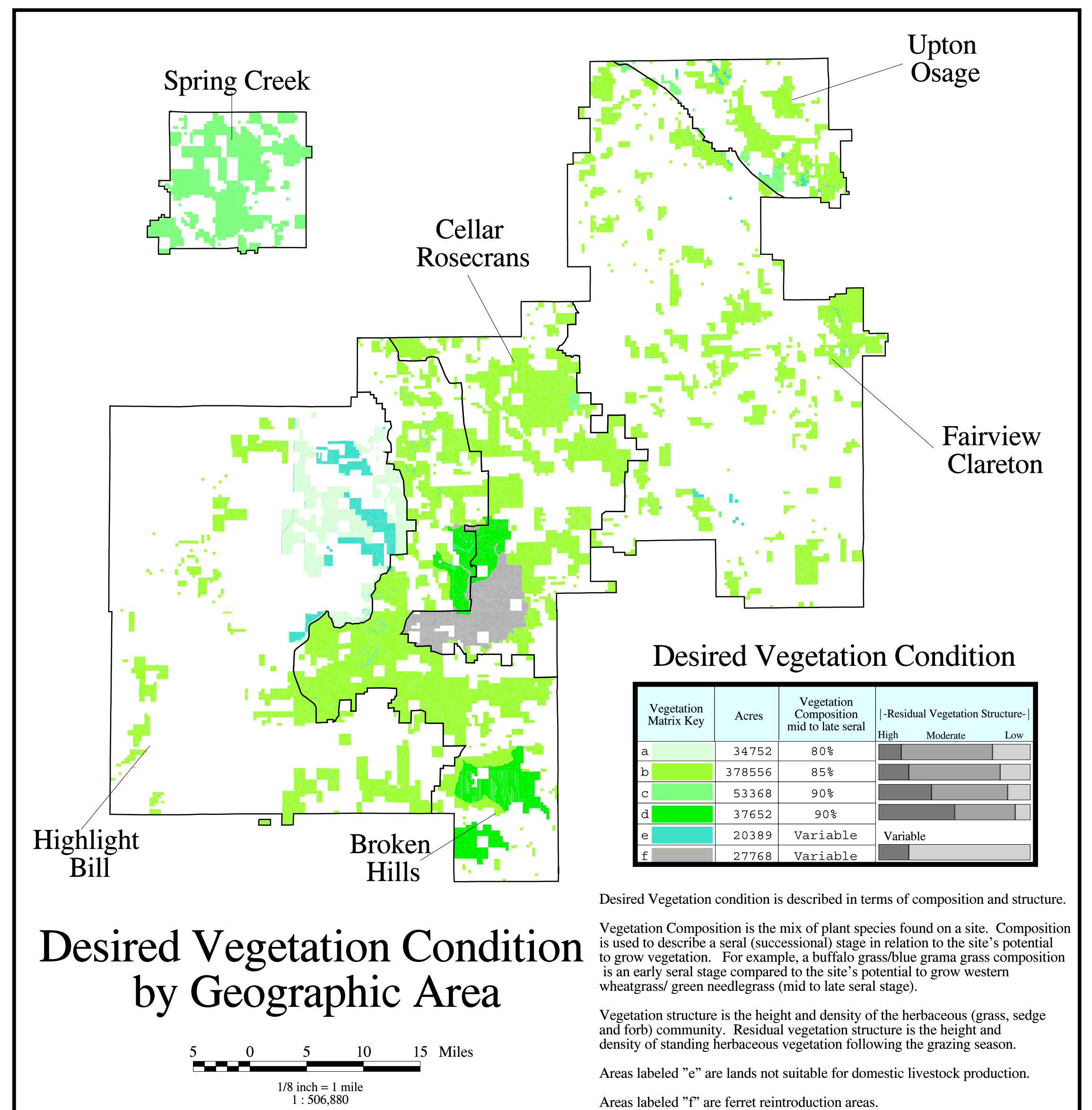
State Lands

Concurrent Management

Black-Footed Ferret Reintroduction Habitat

Concurrent management areas exist when two compatible management areas exist for the same piece of ground. The dominant management area will show up in the colored legend. The other management area or areas will show up as cross-hatching over the colored legend.

Legend	Concurrent Management Areas	Acres
	Black-Footed Ferret Reintroduction Habitat (3.63)	13379



Desired Vegetation Condition

Vegetation Matrix Key	Acres	Vegetation Composition mid to late seral	Residual Vegetation Structure		
			High	Moderate	Low
a	34752	80%			
b	378556	85%			
c	53368	90%			
d	37652	90%			
e	20389	Variable			
f	27768	Variable			

Desired Vegetation condition is described in terms of composition and structure.

Vegetation Composition is the mix of plant species found on a site. Composition is used to describe a seral (successional) stage in relation to the site's potential to grow vegetation. For example, a buffalo grass/blue grama grass composition is an early seral stage compared to the site's potential to grow western wheatgrass/ green needlegrass (mid to late seral stage).

Vegetation structure is the height and density of the herbaceous (grass, sedge and forb) community. Residual vegetation structure is the height and density of standing herbaceous vegetation following the grazing season.

Areas labeled "e" are lands not suitable for domestic livestock production.

Areas labeled "f" are ferret reintroduction areas.

Desired Vegetation Condition by Geographic Area

5 0 5 10 15 Miles

1/8 inch = 1 mile
1 : 306,880