

Highlights

Forest-Land Area

Forests cover 382,900 acres or 30.6 percent of Delaware. This is a decrease of 19,800 acres since the previous forest inventory in 1986. A more inclusive definition of forest land was used in this new inventory. Small forested areas in rights of way and in some urban areas that previously were classified as nonforest have been reclassified as forest. These reclassified areas are stocked with trees and at least an acre in size and more than 120 feet wide. If not for this change, the decrease in the estimated forest-land area would have been larger. The area of timberland decreased by 20,200 acres. Timberland represents 98 percent of total forest-land area.

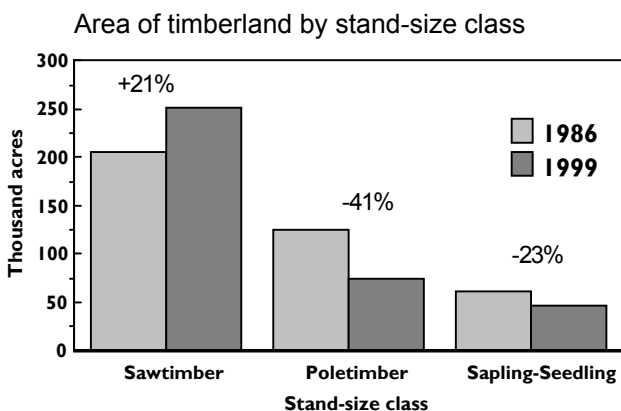
(Thousands of acres at each inventory)

	1957	1972	1986**	1999
Timberland	391.0	384.4	395.8	375.6
Other forest land	1.0	7.4	7.0	7.3
Total forest land	392.0	391.8	402.7	382.9
Percent forested	31.0%	30.9%	32.2%	30.6%
Total land area*	1,266.0	1,268.5	1,251.0	1,251.0

* Estimates of the total land area have changed because of new measurement techniques and refinements in the classification of small bodies of water and streams.

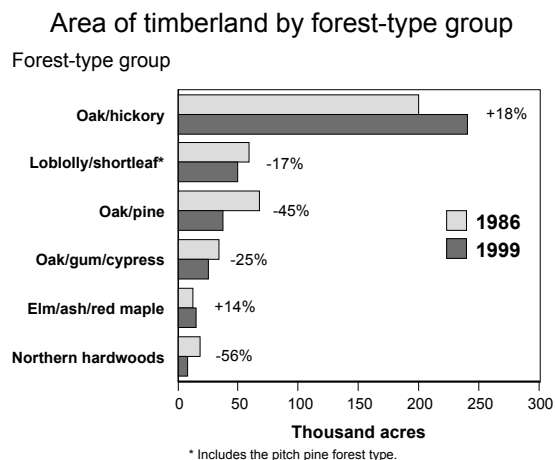
** Based on reprocessing of 1986 data.

Sawtimber-size stands increased by 20.8 percent since the previous inventory and now account for 67.2 percent of the timberland. Poletimber-size stands declined by 41.1 percent and now account for 19.8 percent of timberland. The area in sapling/seedling stands account for 12.5 percent of the timberland and decreased by 22.7 percent. Sweet pepperbush was the most common shrub growing in sawtimber- and poletimber-size stands.



Area by Forest-Type Group

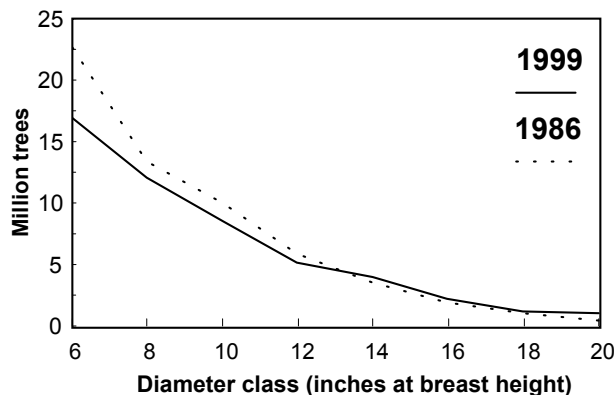
Oak/hickory is the dominant forest-type group, occupying 64 percent of the timberland followed, by the loblolly/shortleaf group, which occupies 13 percent. Oak/hickory and oak/gum/cypress stands were the only forest-type groups that increased in area.



Number of Trees Growing on Timberland

The total number of growing-stock trees at least 5 inches in diameter at breast height has decreased to 52.8 million, since 1986. The number of trees in diameter classes below 14 inches decreased while the number of trees in classes 14 inches and larger increased. Red maple was the most numerous species followed closely by loblolly pine.

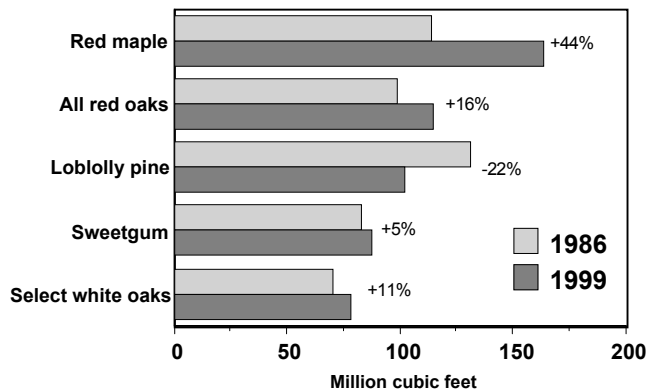
Number of growing-stock trees at each inventory



Volume

The volume of growing-stock trees increased by 4.8 percent to total 692.2 million cubic feet. The average volume per acre increased from 1,668 cubic feet per acre in 1986 to 1,843 cubic feet in 1999. The volume of softwood species decreased by 29.9 percent while the volume of hardwood species increased by 16.2 percent. Red maple has surpassed loblolly pine in volume and is now the leading species.

Change in growing-stock volume, top five species



The volume in trees large enough to produce sawlogs increased by 16.7 percent to 2.2 billion board feet. Red maple has the largest board-foot volume followed by loblolly pine.

Growth and Removals

On an annual basis, net growth of growing stock on Delaware's timberland has averaged 16.4 million cubic feet of wood. The average annual harvest plus other removals is 14.5 million cubic feet. The ratio of net growth to removals has averaged about 1.1 : 1 over the past inventory period.

On an annual basis, mortality has averaged 7.8 million cubic feet—1.1 percent of the current inventory.

Average annual net growth and removals of growing-stock, top five species

