

Forest Inventory & Analysis

Increasing Our Understanding of the Northeast's Forests

Connecticut's Forest Resources, 2005 A USDA Forest Inventory & Analysis Update

Introduction

Connecticut's forested landscape is integral to the State's ecological and social character. Forests currently cover an estimated 58 percent of the land (Figure 1 and Table 1). The trees and other biotic and abiotic components provide the State's citizens clean water and air, places to recreate and seek serenity, backdrops for their homes and everyday lives, and raw materials for forest products and firewood.

The FIA Program

To make informed decisions about forest resources, it is imperative to have accurate and timely forest resource information. The USDA Forest Service's Forest Inventory and Analysis (FIA) program was created to provide broad-scale forest resource information to Federal, State, and local policy makers, public and private forest managers, and everyone interested in the current and future state of the forest. FIA is the Nation's forest census.

On a recurring basis, specially trained foresters visit a set of randomly selected plots—roughly, one per 6,000 ac. For the forested plots, information is recorded on tree species, size, and quality, in addition to other biophysical attributes. Previous FIA forest inventories were conducted in

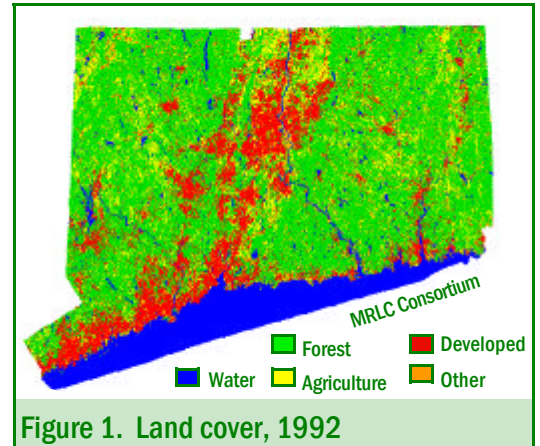


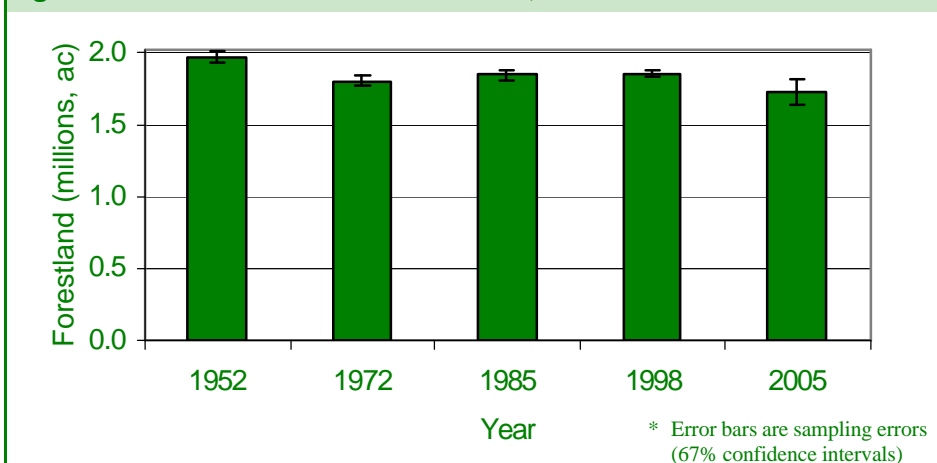
Figure 1. Land cover, 1992

Connecticut in 1952, 1972, 1985, and 1998.

The current inventory, initiated in 2003, is being implemented on an annual basis. Every year, 15 percent of the plots, equally dispersed across the State, are inventoried. This update includes information from 224 plots—the first 40 percent of the plots inventoried. As the sample size increases, so too will the precision of the estimates. We strongly encourage all FIA data users to examine the sampling errors accompanying the estimates to assess data reliability.

After the full set of plots is inventoried, FIA will immediately begin to remeasure plots and provide trend data that are detailed, accurate, and timely.

Figure 2. Trends in Connecticut's forest area, 1952 to 2005*



(Continued on next page)

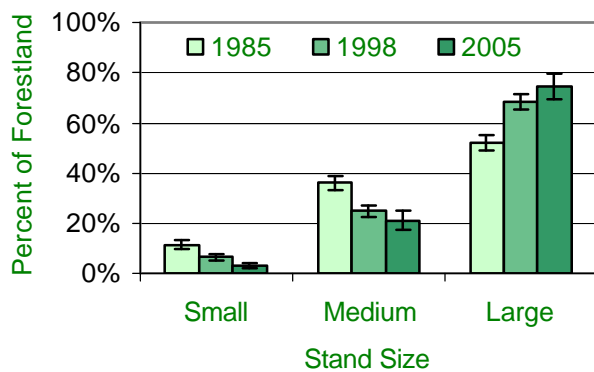
Forest Area

There are between 1.7 and 1.9 million acres of forestland in Connecticut (Table 1). This represents a loss of forestland since 1998, but statistically, the difference is only marginal and more samples are needed to fully quantify this trend. Forestland is not evenly distributed across the State (Figure 1). Private owners control 77 percent of the forestland (Table 1).

Stand Size and Volume Per Acre

Forest stands were classified as large (sawtimber), medium (poletimber), small (seedlings and saplings), or non-stocked based on the diameter of the plurality of trees sampled. Most of Connecticut's forests are composed of large or mature stands, and there are relatively few small or young stands (Figure 3).

Figure 3. Stand size distribution in Connecticut, 1985, 1998, and 2005*



* Error bars are sampling errors (67% confidence intervals)

The average stand volume is 2,001 ft³ per acre of forestland in Connecticut (Tables 1 and 4). This is the 10th highest level in the United States.

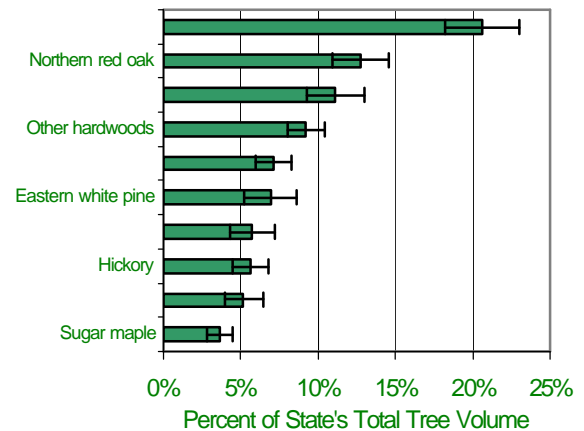
Species Composition

Sixty species of trees were encountered on the 156 forested plots inventoried. Red maple is the most common tree species in Connecticut—accounting for 21 percent of the State's total tree volume (Figure 4 and Table 4). The 10 most common species/species groups account for 88 percent of the volume of trees in the State.

Connecticut forest facts

- Forest area: 1,786,800 acres
- Number of live trees: 901,315,000
- Volume of trees: 3,576 million ft³

Figure 4. Most common tree species and species groups in Connecticut, 2004*



* Error bars are sampling errors (67% confidence intervals)

The Future

The fate of Connecticut's forests lies largely in the hands of the 100,000 families and individuals who own 56 percent of the forestland in the State. Land use and population pressures, landowners' ownership objectives, the value of environmental services, timber markets, and social norms and values will influence much of the future forest's characteristics. Continued monitoring of the State's forest resources will help policy makers and others formulate more informed opinions and help foster sound forest and environmental stewardship.



USDA FOREST SERVICE NORTHEASTERN RESEARCH STATION FOREST INVENTORY & ANALYSIS

11 Campus Boulevard, Suite 200
Newtown Square, PA 19073
Phone: 610-557-4075
Fax: 610-557-4250
Internet: www.fs.fed.us/ne/fia/

The FIA Connecticut Team

Field crew: Bryan Tirrell, Ashley Zickefoose, Todd Bixby, Brian Rudd, Erika Mattson, Kathy Tillman, and Paul Natiella
Data compiler: Barbara O'Connell
Analyst: Brett Butler