

**APPENDIX 2 -- EASTERN U.S. SITE-TREE SELECTION CRITERIA
 AND FIA FOREST TYPE ALGORITHM FOR THE U.S.**

EASTERN U.S. SITE-TREE SELECTION CRITERIA

Ideally, site trees in the eastern U.S. should be between 20-70 years old. If preferred trees cannot be found in this age range, expand the age range to 15-120 years. Reject trees outside the 15-120 year age range, trees that exhibit signs of damage, trees with ring patterns that show signs of suppression, trees less than 5.0 inches DBH, trees with abnormalities at DBH, and trees with rotten cores. A list of preferred site-tree species are provided below. Site trees should be selected in the following order of preference:

- 1st Choice: representative of the stand, on the list below for your region.
- 2nd Choice: representative of the stand, on the list below for an adjoining eastern region.
- 3rd Choice: not representative of the stand, on the list below for your region.
- 4th Choice: not representative of the stand, on the list below for an adjoining eastern region.
- Last Choice: any suitable non-woodland tree on the general tree list.

Note: NE = Northeast, NC = North Central, SO = Southern

Code	Common Name	Region
----- Softwood Species -----		
012	balsam fir	NE, NC
043	Atlantic white-cedar	NE
068	eastern redcedar	NE, NC
070	larch (introduced)	NE
071	tamarack (native)	NE, NC
091	Norway spruce	NE
094	white spruce	NE, NC
095	black spruce	NE, NC
097	Red spruce	NE
105	jack pine	NE, NC
110	shortleaf pine	NE, SO
125	red pine	NE, NC
128	pond pine	NE, SO
129	eastern white pine	NE, NC, SO
130	Scotch pine	NE, NC
131	loblolly pine	NE, SO
132	Virginia pine	NE, SO
241	northern white cedar	NE, NC
261	eastern hemlock	NE

Code	Common Name	Region
----- Hardwood Species -----		
316	Red maple	NE, NC
317	silver maple	NE, NC
318	sugar maple	NE, NC
371	yellow birch	NE, NC
375	paper birch	NE, NC
402	bitternut hickory	NE, NC
407	shagbark hickory	NE, NC
462	hackberry	NE
531	American beech	NE
541	white ash	NE, NC
543	black ash	NE, NC
544	green ash	NE, NC
602	black walnut	NC
611	sweetgum	NE, SO
621	yellow-poplar	NE, SO
742	eastern cottonwood	NE, NC, SO
743	bigtooth aspen	NE, NC
746	quaking aspen	NE, NC
762	black cherry	NC
802	white oak	NE, NC, SO
806	scarlet oak	NE, SO
812	southern red oak	NE, SO
813	cherrybark oak	NE, SO
817	shingle oak	NE, SO
827	water oak	NE, SO
830	pin oak	NE, SO
832	chestnut oak	NE, SO
833	northern red oak	NE, NC, SO
835	post oak	NE, SO
837	black oak	NE, NC, SO
901	black locust	NE
951	American basswood	NE, NC
972	American elm	NE, NC

NOTE: 602 and 762* are not to be cored due to the regional commercial value of these species. 743 and 746 are not to be cored. Aspen reproduces by root suckers. They are highly susceptible of transmitting disease from open wounds caused by boring and scribing, which may cause damage to other trees in the stand. Veneer quality trees should also be avoided, if there are other acceptable trees in the plot area for site index and stand age.

***762 can only be cored on public land.**

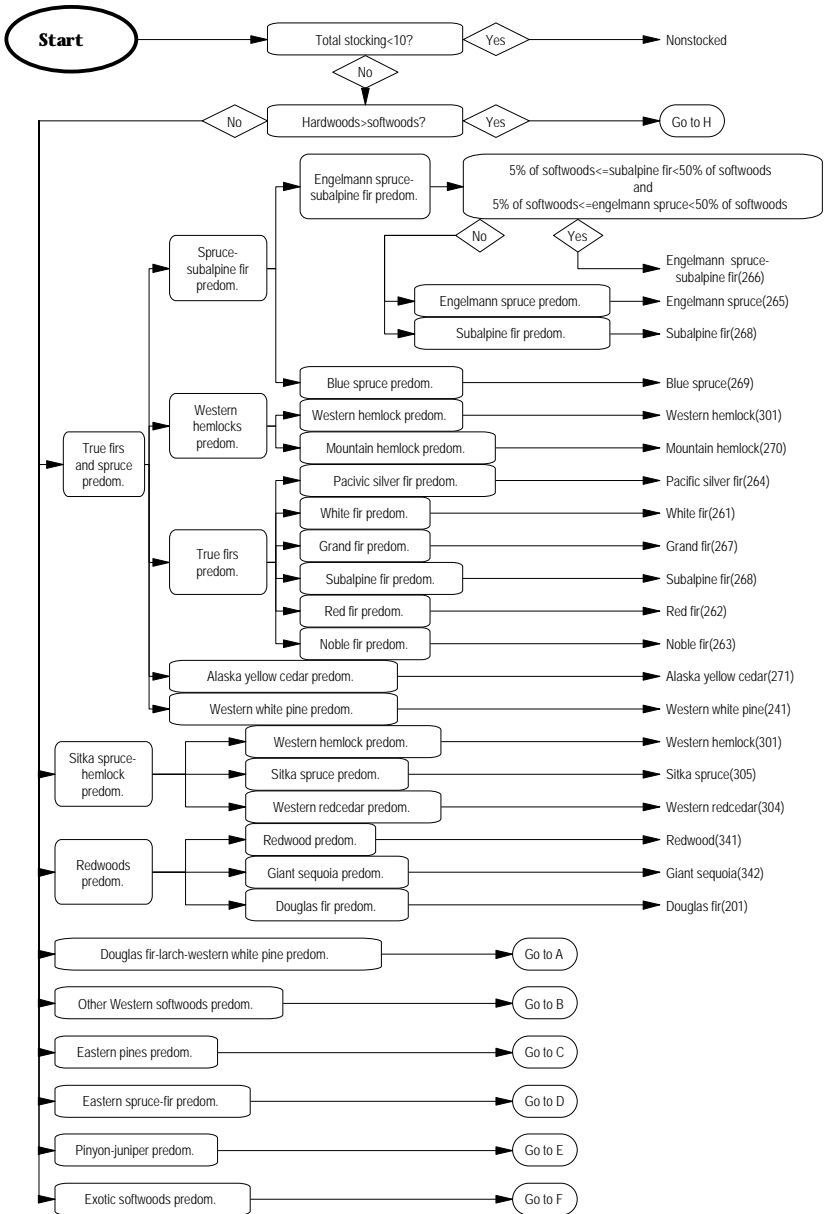


Fig. 1. Forest Inventory and Analysis forest type algorithm for the United States.

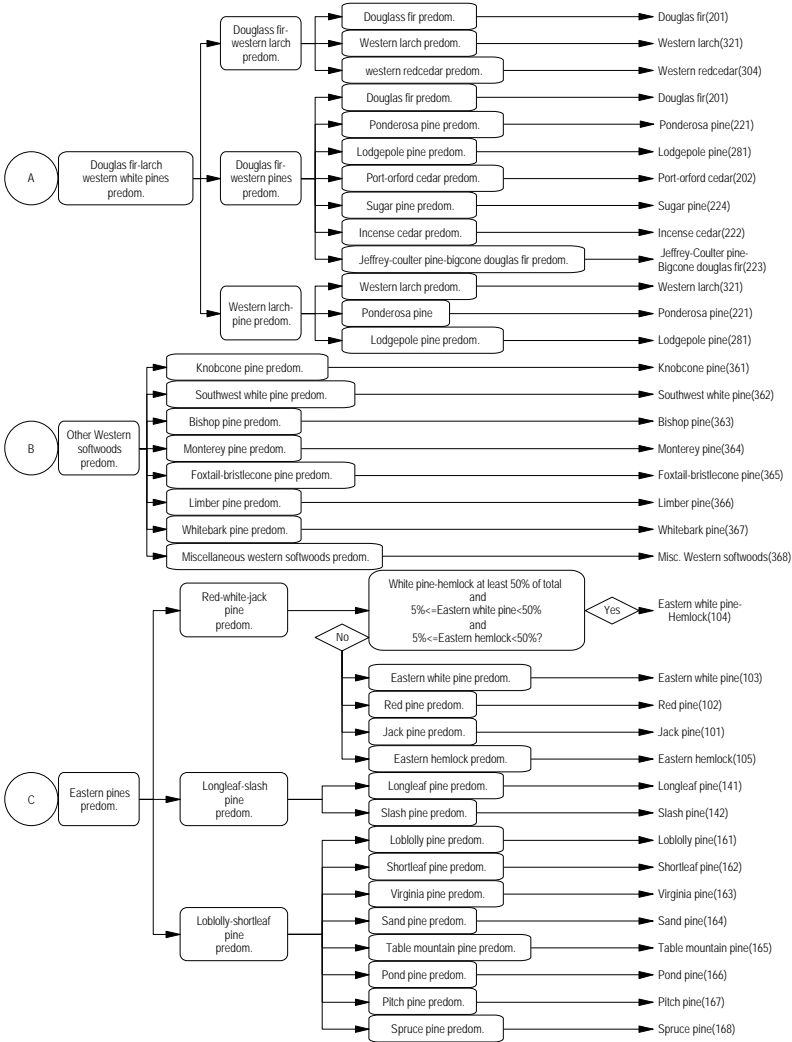


Fig. 1. Cont.

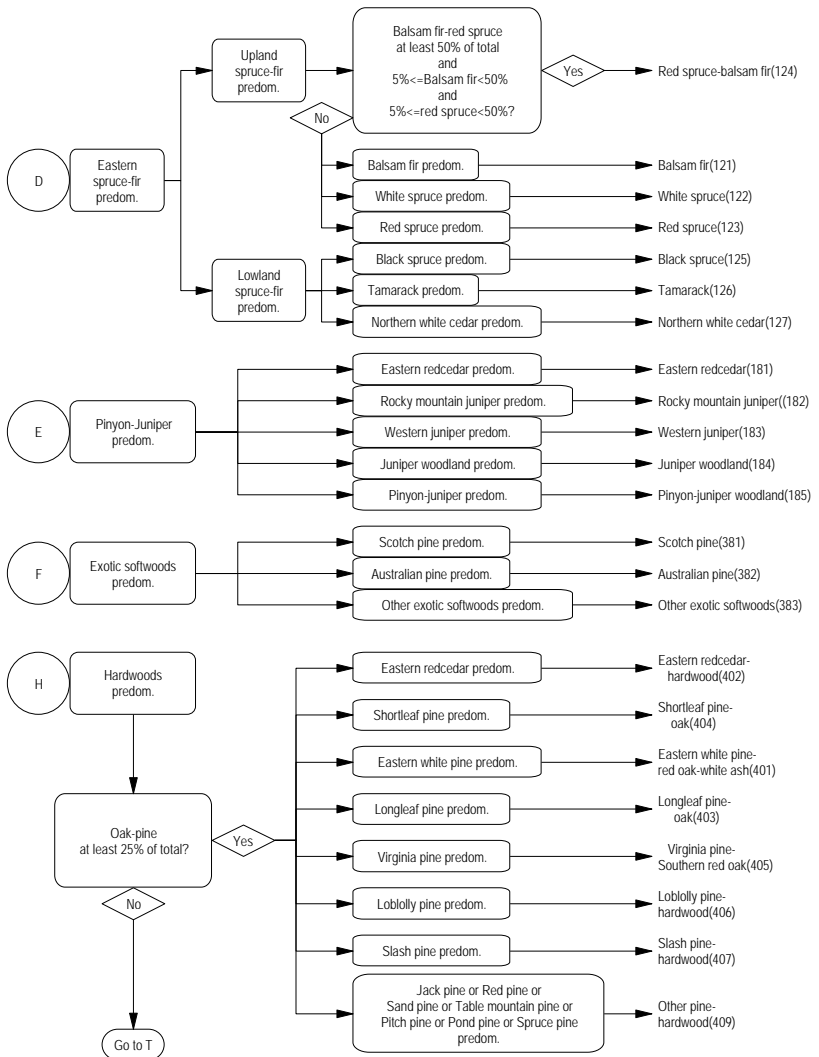


Fig. 1. Cont.

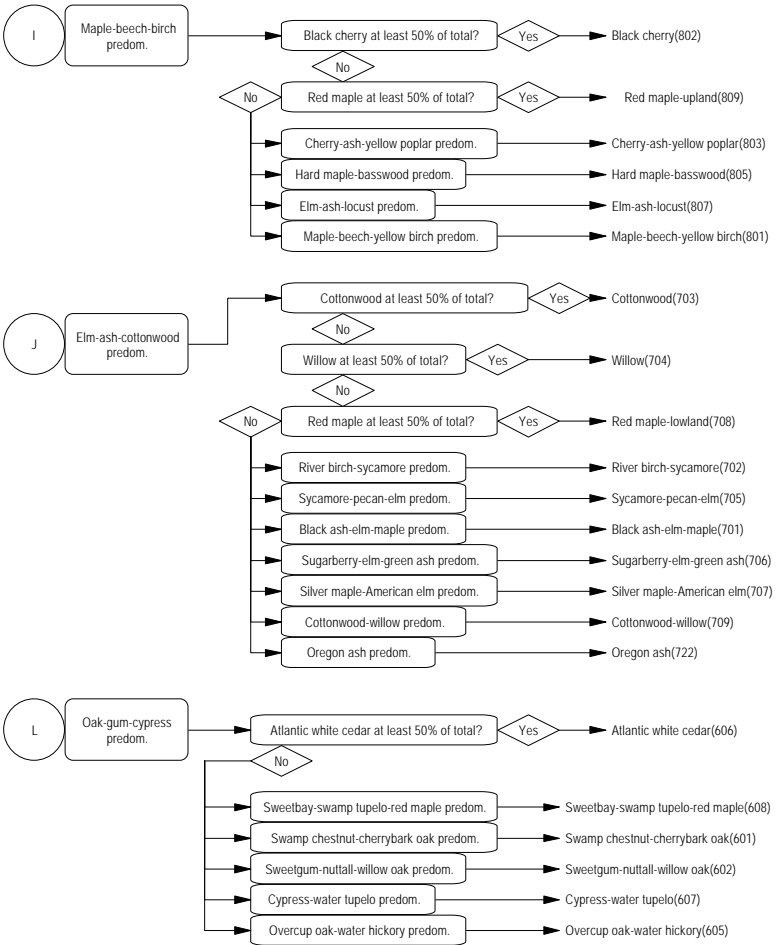


Fig. 1. Cont.

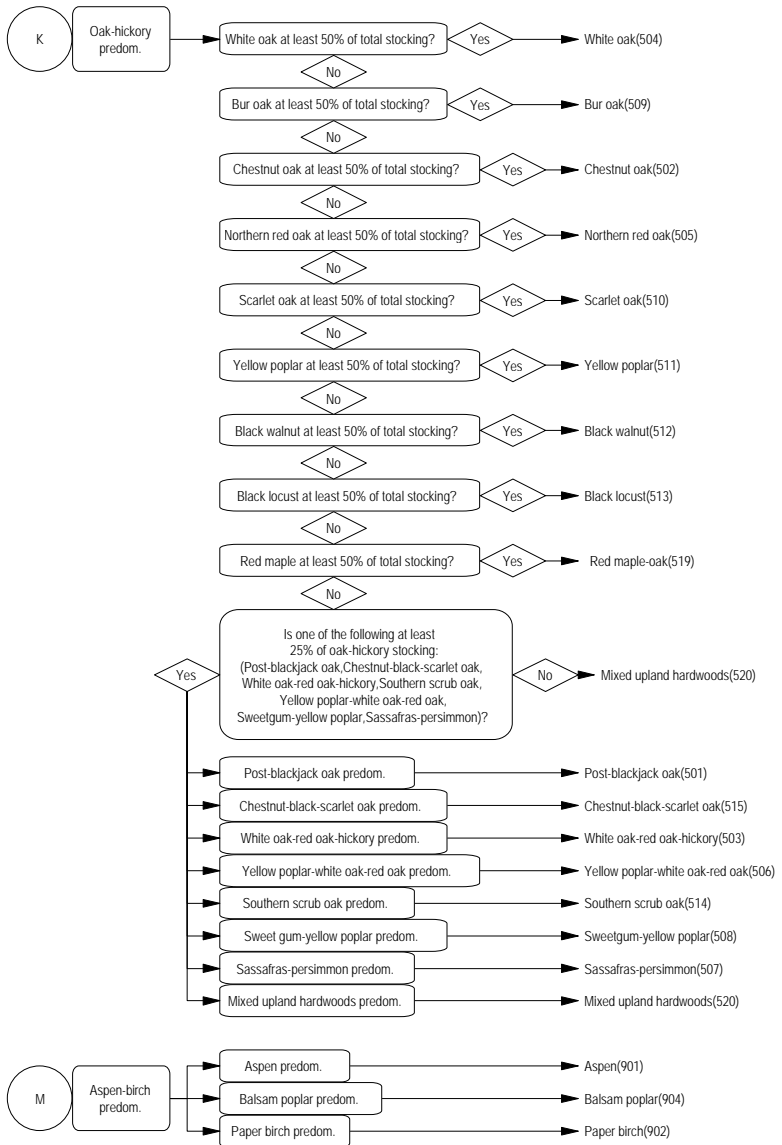
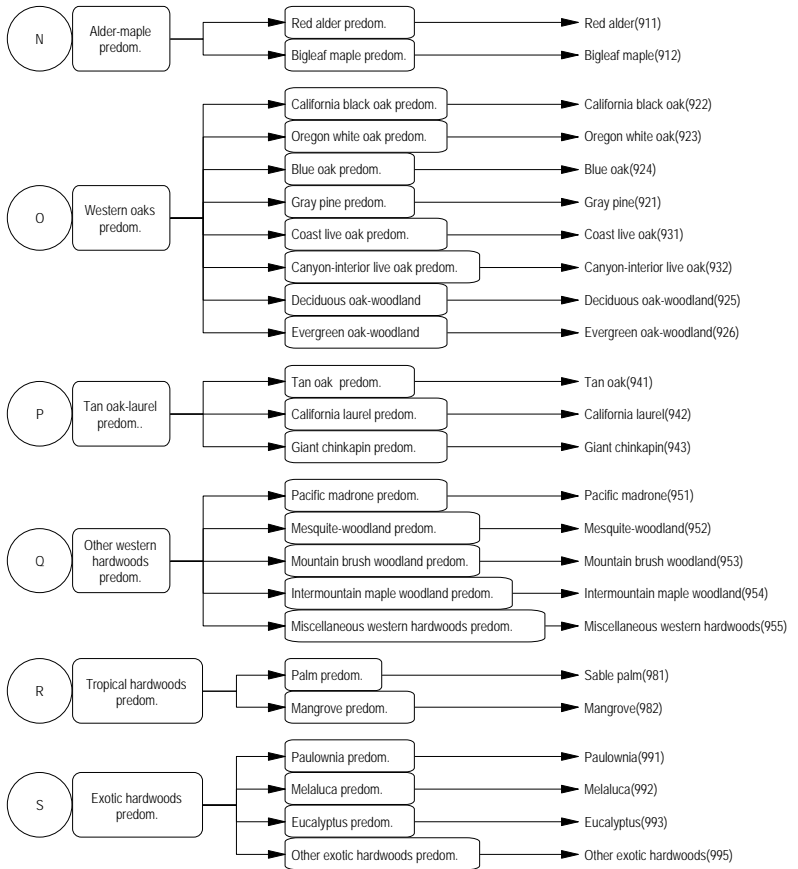


Fig. 1. Cont.



SPECIAL MIXED CONIFER TEST FOR CALIFORNIA - IMPLEMENTED AFTER FOREST TYPE IS DETERMINED.

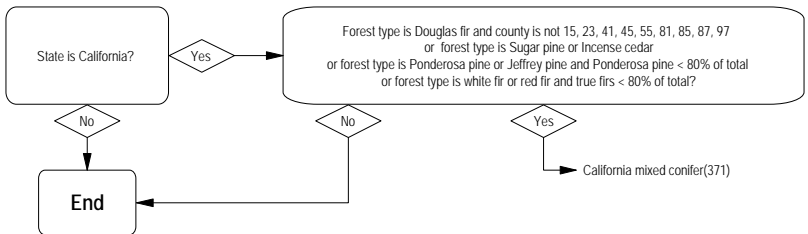


Fig. 1. Cont.

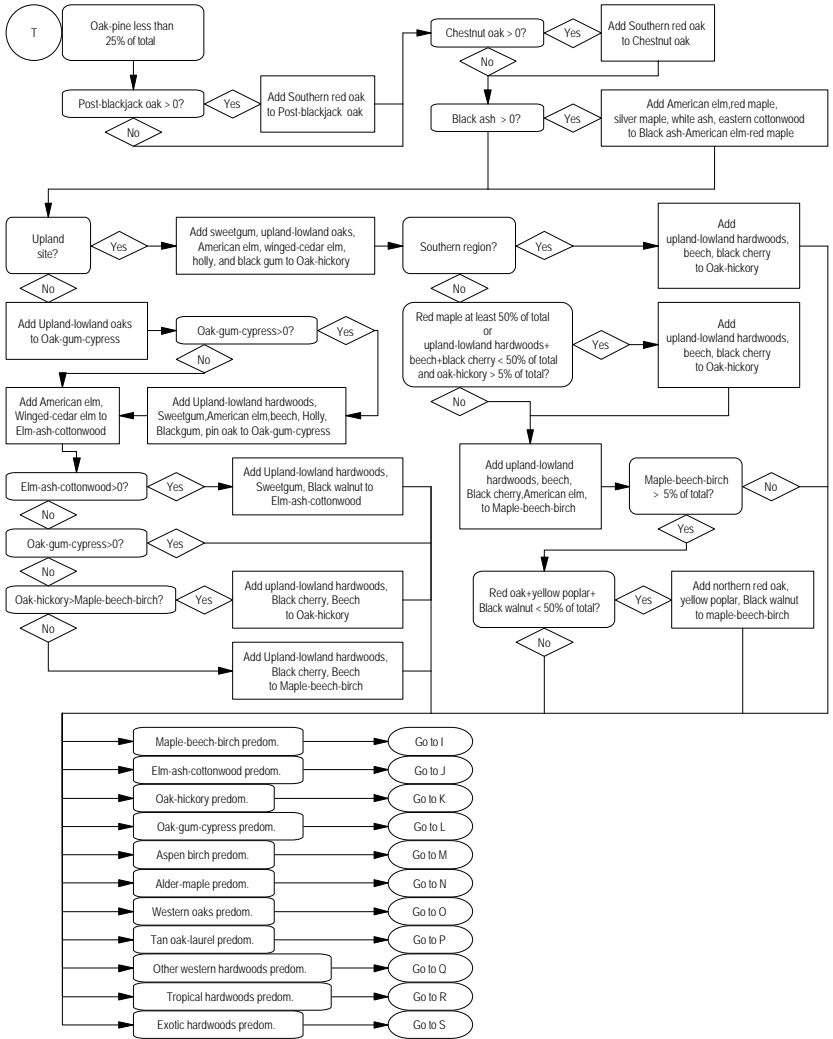


Fig. 1. Cont.

