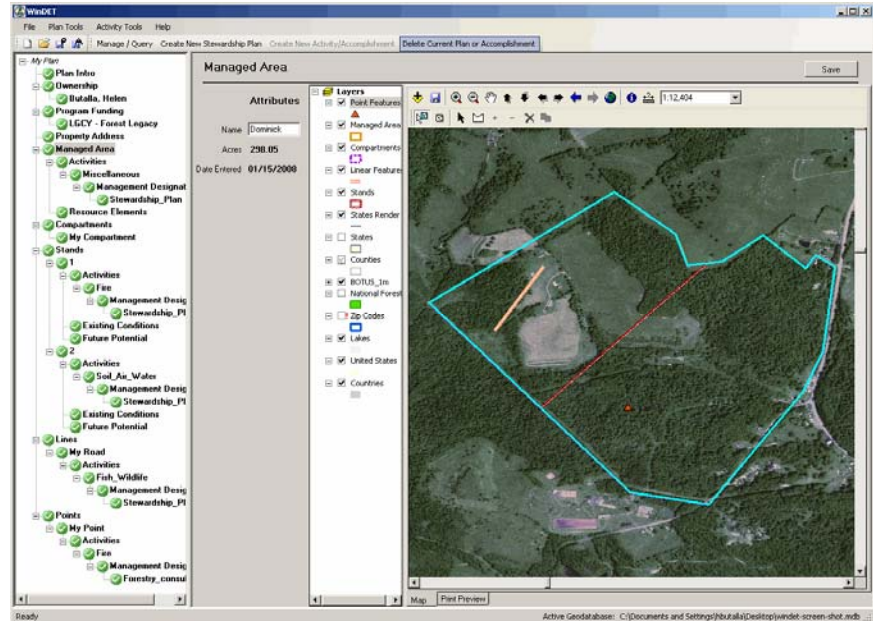




WinDET...a windows-based data entry and report writing tool supporting the US Forest Service Forest Stewardship Program (FSP).

WinDET is a desktop GIS application that provides the "Plan Preparer" functionality of WebDET to users without high-speed internet access through a non-technical, user-friendly interface.

Target audiences for WinDET include state stewardship coordinators, private consultant foresters, and other state staff who write stewardship plans and perform other resource-based activities that require spatial documentation and upward reporting to WebDET.



Functionality

- Use a PC running Microsoft Windows to manage stewardship plans, track management activities, and record accomplishments while disconnected from the internet.
- Quickly and intuitively lay out the spatial components of a stewardship plan (managed area, compartments, stands, points and lines) by digitizing directly on screen or by uploading features from existing shape files.
- Conveniently build a Forest Stewardship management plan that fulfills USDA Forest Service national reporting standards.
- Extract plans into a separate geodatabase for uploading into WebDET.

Technical Considerations

- WinDET is designed for PCs running either ArcGIS 9.2 or no GIS software. For users with no GIS software, WinDET uses an imbedded ArcGIS Runtime Engine, with a license available to the user upon request.
- Plans entered into WinDET must be uploaded into WebDET by the Plan Approver as "In Progress" or "Approved".
- As an extension of WebDET, WinDET abides by all security requirements of the WebDET application.

Visit <http://www.fs.fed.us/na/sap/wdet/requirements/index.shtml> for system requirements and instructions for obtaining a copy of WinDET.