

WIFDWC 2006 Photo Contest

Participate in WIFDWC's first-ever photo contest!

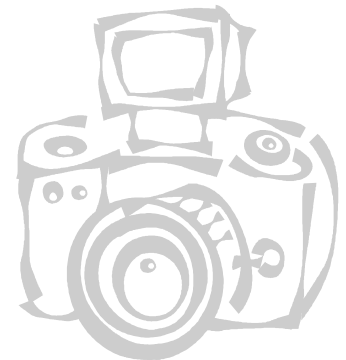
Photo Categories

- **Forest Pathogen(s): Sign(s)**
- **Forest Pathogen(s): Disease Symptom(s)**
- **Forest Pathologist(s)**

Rules of Entry

- ✚ **No more than 1 photo per category per participant**
- ✚ **Participants must be attending the 2006 meeting **OR** be an active WIFDWC member unable to attend the 2006 meeting.**
- ✚ **Submit 8"X10" (approximate measurements) photographs (hard copy prints, **color** OR black and white) for judging. On the back of each photo *in pencil* include the name of entrant and category of photo.**
- ✚ **Photos may be submitted **either** by 1) bringing photos to the meeting and providing them to meeting coordinators at registration **OR** 2) sending hard copy prints (**NO electronic files or slides accepted!**) **by September 15, 2006** to:**

Ellen Goheen
USDA Forest Service
2606 Old Stage Road
Central Point, OR 97502 USA



- *Photos will be on display during the poster session.*
- *A small team of judges will evaluate the entries and award first, second and third place in each category.*
- *Meeting attendees will also vote during the poster session for a "People's Choice Award" in each category.*
- *Winning photos and photographers will be announced at the banquet.*
- *Award winning pictures will be prominently displayed in the proceedings of the 2006 meeting and on the WIFDWC website.*
- *By participating, photographers are giving permission for their photos to be printed in the proceedings or copied from the website with appropriate citation of the photographer.*
- *Questions? Contact Ellen via email at: egoheen@fs.fed.us or phone: 541 858 6126*