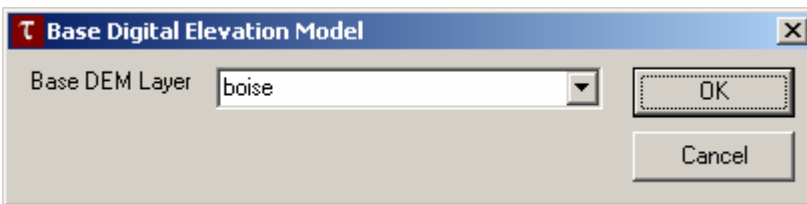
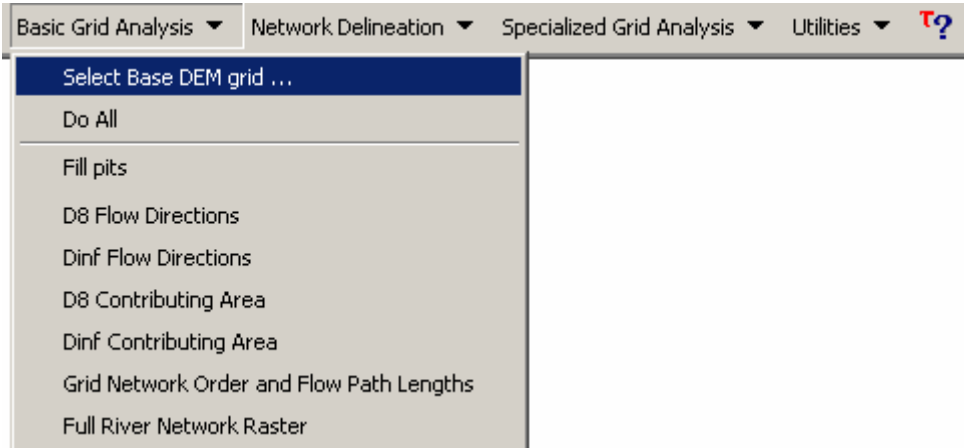


TauDEM Procedures and Notes

Boise Aquatic Science Lab, RMRS, U.S. Forest Service
David Nagel, Richard Cissel, Sharon Parkes - 10/7/08

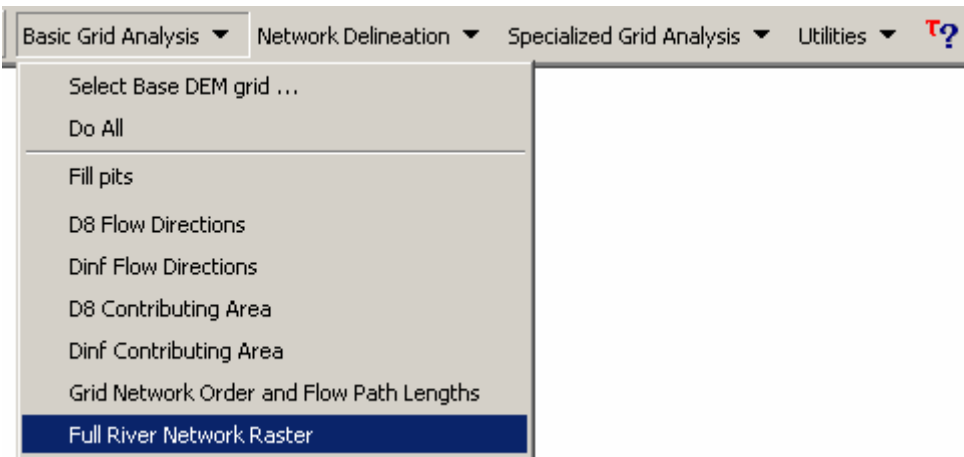
Add your DEM to ArcMap and then On the TauDEM menu:

1. Basic Grid Analysis -> Select Base DEM grid...

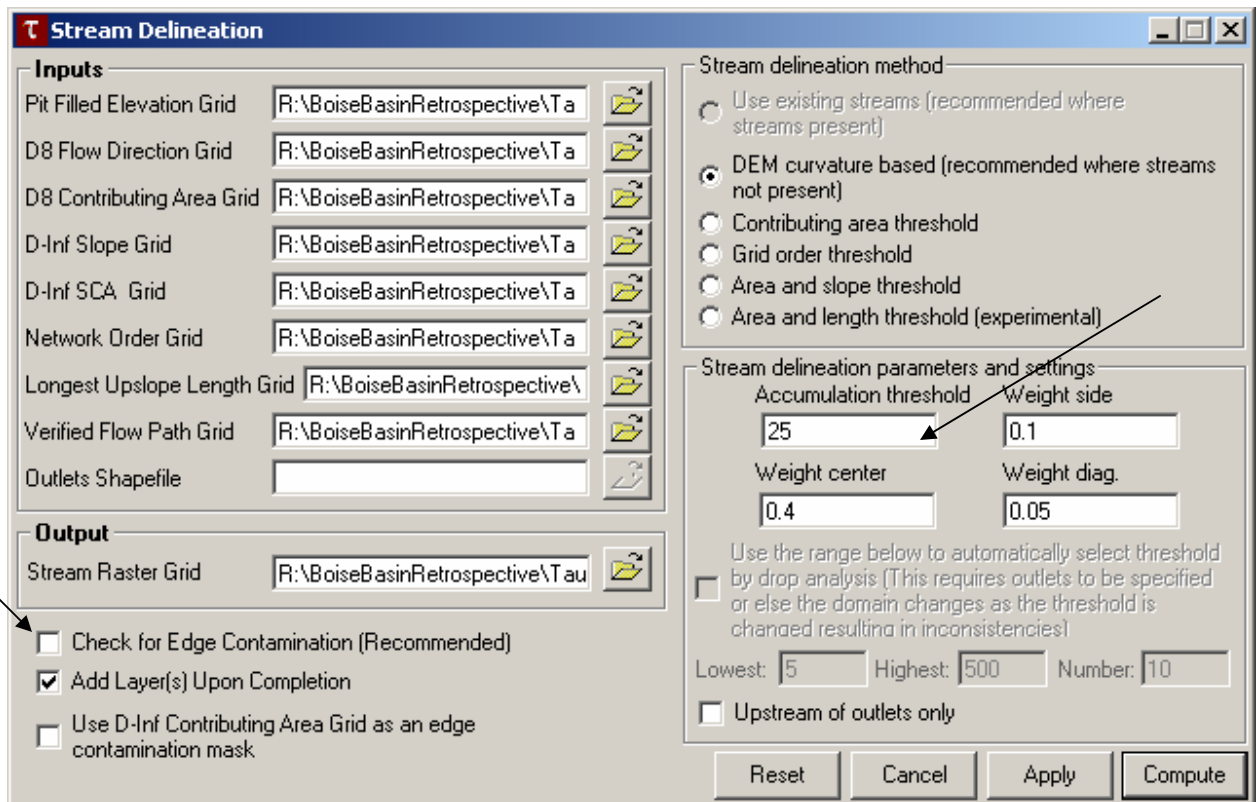


Select your Base DEM Layer and click OK

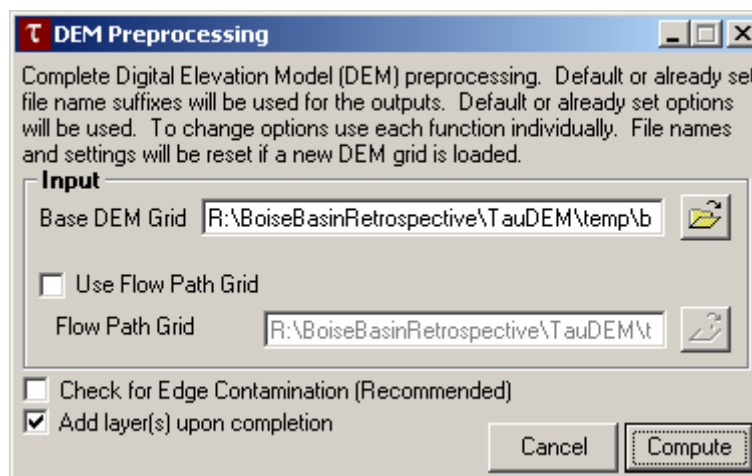
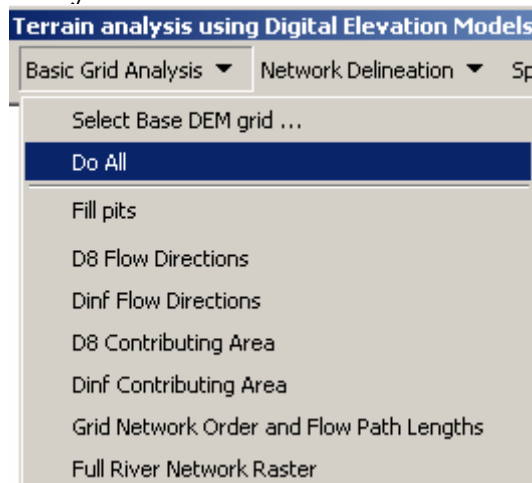
2. Basic Grid Analysis-> Full River Network Raster



- uncheck Check for Edge Contamination
- change Threshold to 25
- click Apply twice, then click Cancel (you don't want to run it now, you just want to set up the parameters)

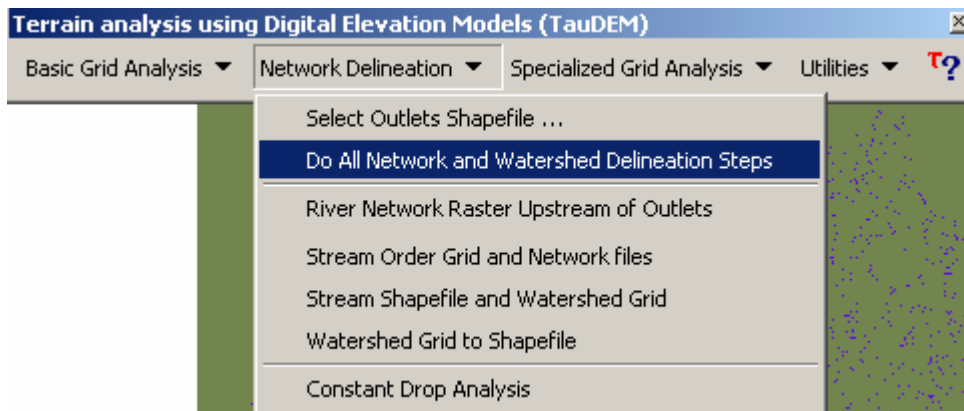


3. Basic Grid Analysis-> Do All

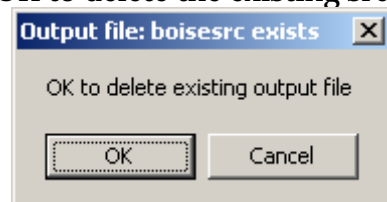


Double check default layers and hit “Compute”
Depending on the size of the DEM, this will take a while to process.

4. Network Delineation-> Do All Network and Watershed Delineation Steps



Click OK to delete the existing src output file



- don't use an outlet point
- don't do anything else between Basic Grid Analysis and this step

Notes:

- The DEM should be projected to a rectangular coordinate system such as UTM, rather than geographic. If the DEM is projected but the projection is not *defined*, use the Define Projection tool (Toolbox-> Data Management-> Projections and Transformations-> Define Projection). After defining the projection, close ArcMap and open a new session before beginning the TauDEM process. This step sets the ArcMap viewer with the correct projection information.
- The TauDEM procedure works best if the DEM is clipped to a watershed boundary that encompasses the study area. A value of NoData should be present outside of the watershed boundary (but within the rectangular grid extent), with valid elevation values (units meters) inside the watershed boundary.
- Use ArcCatalog to create a new ArcInfo workspace for the TauDEM results. Copy the DEM grid to this workspace before beginning. The DEM should be the only GIS layer in the workspace. The DEM file name should contain no more than 7 characters.
- Be sure that the DEM workspace is not active (currently being viewed) in ArcCatalog when the TauDEM process is running.
- The output grids from the Basic Grid Analysis and Network Delineation steps may be removed from the ArcMap viewer after those procedures are completed. The stream network layer will be necessary for completing the GRAIP process.